

U.S. PUBLIC LAND SURVEY MONUMENT RECORD

For Public Land Survey Corners In: WI ADMINISTRATIVE CODE A-E 7.08 REQUIREMENT

T. 1 N. - R. 14 E. of the 4th P.M.

CORNER CODE INDEX

(PLACE "◆" SYMBOL AT PROPER PLSS CORNER LOCATION)

A	2	3	4	5	6	7	8	9	10	11	12	13	14	15	16	17	18	19	20	21	22	23	24	25	A
B																									B
C	6					5				4					3					2	◆	1			C
D																									D
E																									E
F																									F
G	7					8				9				10						11					G
H																									H
J																									J
K	18					17				16				15						14					K
L																									L
M																									M
N																									N
O	19					20				21				22						23					O
P																									P
Q																									Q
R																									R
S																									S
T	30					29				28				27						26					T
U																									U
V																									V
W																									W
X	31					32				33				34						35					X
Y																									Y
Z																									Z
I	2	3	4	5	6	7	8	9	10	11	12	13	14	15	16	17	18	19	20	21	22	23	24	25	I

CLINTON TWP

ROCK COUNTY WI

ROCK COUNTY COORDINATES
(GNSS DERIVED VIA WISCORS)

North 228830.78 Elev.

East 554414.54

Hor. Datum NAD83 (NA2011)

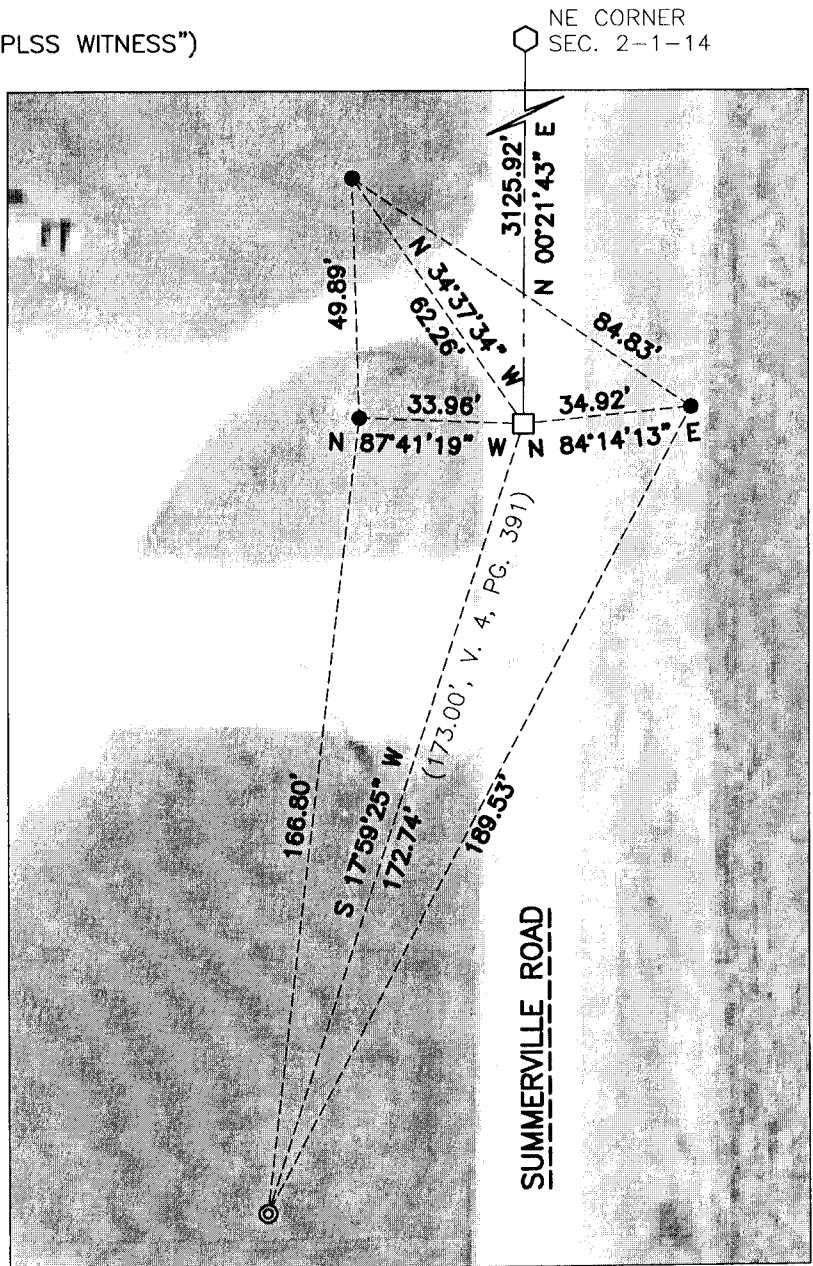
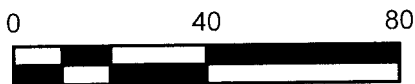
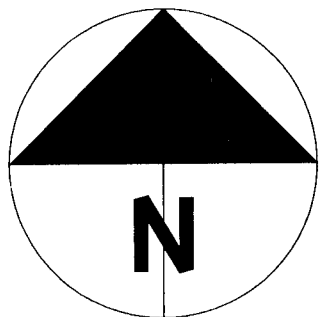
Vert. Datum

BASIS OF BEARINGS

Wisconsin County Coordinate System
Rock County Datum

(a) LEGEND

- - 5/8" x 24" REBAR SET, (RED CAP W/"PLSS WITNESS")
- - ALUMINUM MONUMENT SET
- ⊙ - IRON REBAR FOUND
- ⊗ - IRON PIPE FOUND
- ⊠ - IRON PIPE IN MONUMENT BOX FOUND
- - STONE FOUND
- - LIMESTONE FOUND
- △ - RAILROAD SPIKE FOUND
- ⬡ - CAST IRON MON. FOUND, (BROKEN)



SHEET 1 OF 2

FIELD BOOK 2013 PAGE # 7

CORNER CODE C-21

B) Describe any record evidence, monument evidence, occupational evidence, testimonial evidence or any other material evidence you considered, and whether the monument was found or placed.

Found stone as called for in V. 4, Pg. 391 of records. Only 1 tie remains that was formerly by a 5" deciduous tree. The tree is gone and I accepted the position of the pipe. The center of the top of the exposed stone was surveyed as the corner location. There is a "high point" on the stone to the West but that does not appear to be the top of a pointed stone, rather, what remains after the stone has been located and perhaps had portions knocked off during excavation. Barnes did not prepare a tie-sheet for this corner however; his distance to the Northeast corner was 3125.88'. My measured distance of the same line via GNSS is 3125.92 feet. I accepted the center as surveyed and tied off the same as shown.

C) Was the corner restored through acceptance of (1) an obliterated evidence location, or, (2) a found perpetuated location?

Found perpetuated location.

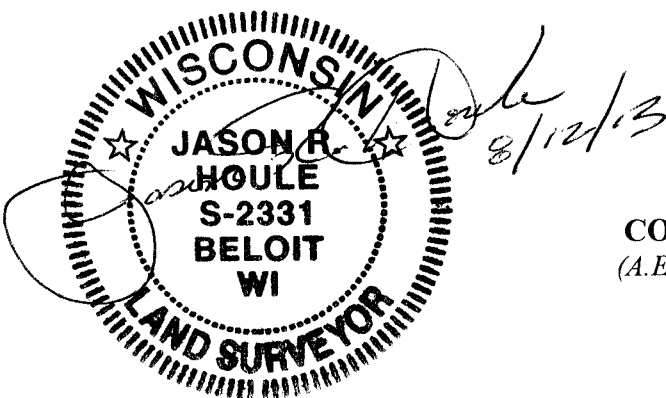
D) Describe any material discrepancy between the location of the corner as restored or reestablished and the location of that corner as previously restored or reestablished by distance and direction. Show the discrepancy on the plan view drawing under (a), above. Show the distances between the corner as previously restored or reestablished and (1) the corner as restored or reestablished, and (2) to at least 4 of the witness monuments shown on the drawing in (a), above.

N/A

(E) Was the corner reestablished through lost corner proportionate methods? If so, show the method, including the directions and distances to other public land survey corners used as evidence or used for proportioning the corner location.

N/A

I, Jason R. Houle, hereby certify that the corner location as identified by the corner code index was determined by me under my direction and control and that this U.S. Public Land Survey Monument Record is correct and complete to the best of my knowledge and belief.



CORNER CODE: C-21
(A.E. 7.08 REQUIREMENT)