

~~U.S. PUBLIC LAND SURVEY MONUMENT RECORD~~

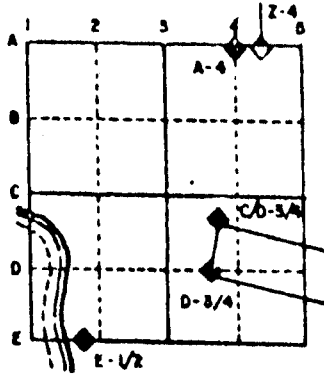
For Public Land Survey Corners in the
T. ___ N., R. ___ E.

CORNER CODE INDEX

	1	2	3	4	5	6	7	8	9	10	11	12	13	14	15	16	17	18	19	20	21	22	23	24	25
A																									
B																									
C	6																								
D		5																							
E			4																						
F				3																					
G					2																				
H																									
I	7																								
J		8																							
K			9																						
L				10																					
M					11																				
N						12																			
O							13																		
P								14																	
Q									15																
R										16															
S											17														
T												18													
U													19												
V														20											
W															21										
X																22									
Y																	23								
Z																		24							
																			25						
																				26					
																					27				
																						28			
																							29		
																								30	
																									31
																									32
																									33
																									34
																									35
																									36

PLACE MONUMENT SYMBOL (◆) AT PROPER LOCATION ON ABOVE INDEX

EXAMPLE



CLINTON TWP
ROCK COUNTY WI

IF AVAILABLE
STATE PLANE COORDINATES

North (Y) _____ Eleve. (Z) _____
 East (X) _____ Zone _____
 Hor. Datum _____ Vert. Datum _____

◆ CORNER MONUMENT

○ WITNESS MONUMENT

BEARINGS ARE BASED ON:

SHEET ___ OF ___

CORNER CODE: V-25

RECORD OF U. S. PUBLIC LAND SURVEY CONTROL STATION

U. S. PUBLIC LAND SURVEY CORNER 25³⁰
32³¹ T 1 N, R 15 E, WALWORTH COUNTY, WIS.

GEODETIC SURVEY BY: AYRES ASSOCIATES YEAR: 1992

STATE PLANE COORDINATES OF: SECTION CORNER

NORTH 186,986.34

EAST 2,329,935.28

ELEVATION OF STATION: 948.850

HORIZONTAL DATUM: WISCONSIN STATE PLANE COORDINATE SYSTEM, SOUTH ZONE

VERTICAL DATUM: NATIONAL GEODETIC VERTICAL DATUM OF 1929

CONTROL ACCURACY: THETA ANGLE: + 0-50-26

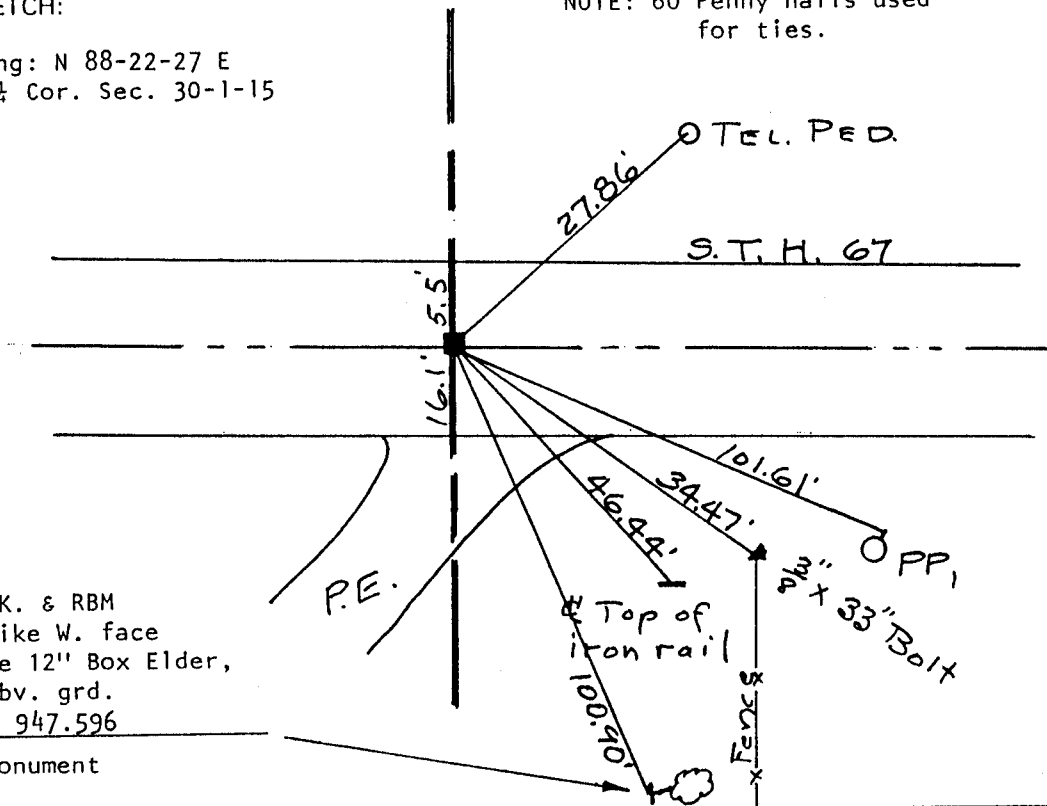
HORIZONTAL: THIRD ORDER, CLASS I VERTICAL: SECOND ORDER, CLASS II

LOCATION SKETCH:



Bearing: N 88-22-27 E
To S $\frac{1}{4}$ Cor. Sec. 30-1-15

NOTE: 60 Penny nails used for ties.



REF. MK. & RBM
RR. Spike W. face
W. face 12" Box Elder,
1.9' abv. grd.
Elev. 947.596

■ — Aluminum Monument

SURVEYOR'S AFFIDAVIT:

STATE OF WISCONSIN) SS
WALWORTH COUNTY)

I hereby certify that I have the following record from Don Barnes, County Surveyor for Rock County. "Dug and found 1.6' X 1.2" X 1.3' triangle lime stone 3' deep with point up. Set aluminum monument, October 9, 1980, Donald Barnes, County Surveyor, Rock County."

DATE OF SURVEY: 4-21-92 Lloyd L Jensen S - 211

REGISTERED LAND SURVEYOR

FORM PREPARED BY SOUTHEASTERN WISCONSIN REGIONAL PLANNING COMMISSION

A-5