

U.S. PUBLIC LAND SURVEY MONUMENT RECORD

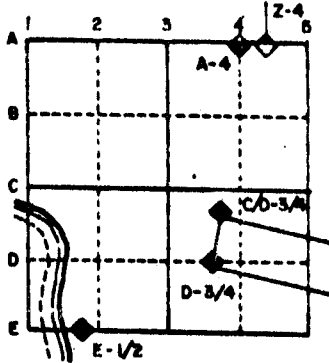
For Public Land Survey Corners in the
T. 1 N., R. 14 E.

CORNER CODE INDEX

	1	2	3	4	5	6	7	8	9	10	11	12	13	14	15	16	17	18	19	20	21	22	23	24	25
A																									
B																									
C	6																								
D		5																							
E			4																						
F				3																					
G					2																				
H																									
I	7																								
J		6																							
K			5																						
L				4																					
M					3																				
N						2																			
O							1																		
P	19																								
Q		20																							
R			21																						
S				22																					
T					23																				
U						24																			
V							25																		
W								26																	
X									27																
Y										28															
Z											29														
												30													
													31												
														32											
															33										
																34									
																	35								
																		36							

PLACE MONUMENT SYMBOL (◆) AT PROPER LOCATION ON ABOVE INDEX

EXAMPLE



CLINTON TWP
ROCK COUNTY WI

IF AVAILABLE STATE PLANE COORDINATES

North (Y) _____ Eleve. (Z) _____
 East (X) _____ Zone _____
 Hor. Datum _____ Vert. Datum _____

a.)

◆ CORNER MONUMENT

○ WITNESS MONUMENT

BEARINGS ARE BASED ON:

SEE OTHER SIDE

MICROFILMED

SHEET 1 OF 2

CORNER CODE: T25

U. S. PUBLIC LAND SURVEY MONUMENT RECORD

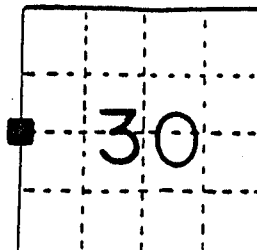
I N S T R U C T I O N S:

This record shall show the location of the corner and shall include all of the following nine elements (a through i)

- (a) Identify the corner by reference to the U.S. public land survey system.

○ = Corner monument restored

■ - Aluminum Monument found at the West 1/4 Section Corner of Section 30 T1N R15E.

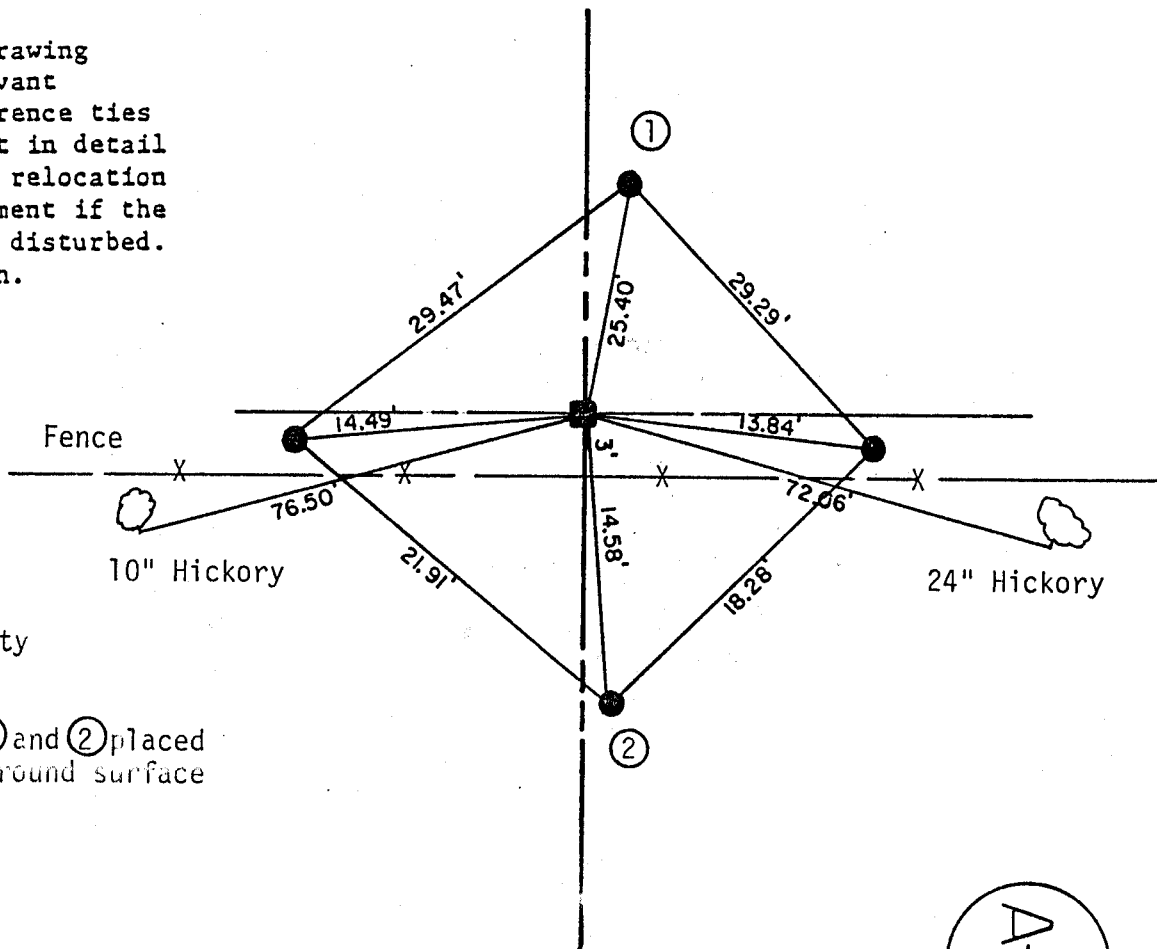


- (b) Describe any record evidence, monument evidence, occupational evidence, testimonial evidence or any other material evidence you considered, and whether the monument was found or placed.

Found monument at the corner, placed by Rock County.

- (c) In the plan view drawing below, provide reference ties to at least 4 witness monuments or, if the location is within a municipality, to at least 2 witness monuments. (Witness monuments shall be made of concrete, natural stone, iron or other equally durable material.) Describe witness monuments.

- (d) Show a plan view drawing depicting the relevant monuments and reference ties which is sufficient in detail to enable accurate relocation of the corner monument if the corner monument is disturbed. Indicate North.



● - 5" Concrete County Witness Monument

NOTE: Monuments ① and ② placed 18" below ground surface



(e) Describe any material discrepancy between the location of the corner as restored or reestablished and the location of that corner as previously restored or reestablished by distance and direction. Show the discrepancy on the plan view drawing under (d) above. Show the distances between the corner as previously restored or reestablished and (1) the corner as restored or reestablished, and (2) to at least 2 of the witness monuments shown on the drawing in (d) above.

Not known

(f) Was the corner restored through acceptance of (1) an obliterated evidence location, or, (2) a found perpetuated location?

Found perpetuated corner.

(g&h) Was the corner reestablished through lost corner proportionate methods? If so, show the method, including the directions and distances to other public land survey corners used as evidence or used for proportioning in determining the corner location.

Not known

(i) I, Lloyd L. Jensen
(type or print name) certify that the corner location shown on this record was determined by me or under my direction and control and that this U.S. Public Land Survey Monument Record is correct and complete to the best of my knowledge and belief.

Lloyd L. Jensen
Signature

5/12/88
Date

Affix Land Surveyor Seal.

