

~~U.S. PUBLIC LAND SURVEY MONUMENT RECORD~~

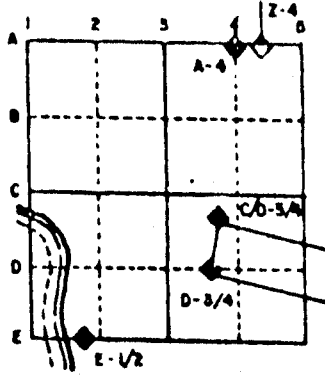
For Public Land Survey Corners in the
T. ___ N., R. ___ E.

CORNER CODE INDEX

	1	2	3	4	5	6	7	8	9	10	11	12	13	14	15	16	17	18	19	20	21	22	23	24	25
A																									
B																									
C																									
D																									
E																									
F																									
G																									
H																									
I																									
J																									
K																									
L																									
M																									
N																									
O																									
P																									
Q																									
R																									
S																									
T																									
U																									
V																									
W																									
X																									
Y																									
Z																									

PLACE MONUMENT SYMBOL (◆) AT PROPER LOCATION ON ABOVE INDEX

EXAMPLE



CLINTON TWP
ROCK COUNTY WI

IF AVAILABLE
STATE PLANE COORDINATES

North (Y) _____ Eleve. (Z) _____
East (X) _____ Zone _____
Hor. Datum _____ Vert. Datum _____

◆ CORNER MONUMENT

○ WITNESS MONUMENT

BEARINGS ARE BASED ON:

SHEET ___ OF ___

CORNER CODE: P-25

RECORD OF U. S. PUBLIC LAND SURVEY CONTROL STATION

U. S. PUBLIC LAND SURVEY CORNER 2419 T 1 N, R 15 E, WALWORTH COUNTY, WIS.

GEODETTIC SURVEY BY: AYRES ASSOCIATES YEAR: 1992

STATE PLANE COORDINATES OF: QUARTER SECTION CORNER
 NORTH 194,913.10
 EAST 2,329,809.60
 ELEVATION OF STATION: 938.792

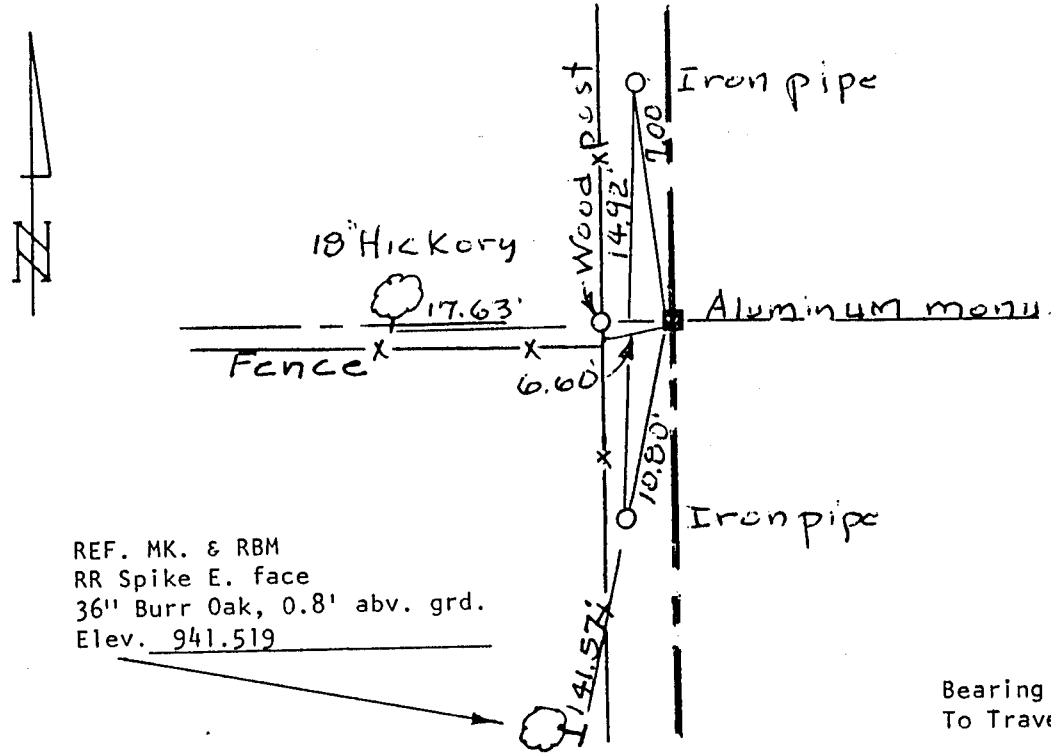
HORIZONTAL DATUM: WISCONSIN STATE PLANE COORDINATE SYSTEM, SOUTH ZONE

VERTICAL DATUM: NATIONAL GEODETTIC VERTICAL DATUM OF 1929

CONTROL ACCURACY:
 HORIZONTAL: THIRD ORDER, CLASS I VERTICAL: SECOND ORDER, CLASS II THETA ANGLE: + 0-50-26

LOCATION SKETCH:

NOTE: 60 Penny nails used for ties.



REF. MK. & RBM
 RR Spike E. face
 36" Burr Oak, 0.8' abv. grd.
 Elev. 941.519

Bearing: N 18-09-42 E
 To Traverse Sta. 9779

SURVEYOR'S AFFIDAVIT:

STATE OF WISCONSIN) SS
WALWORTH COUNTY)

I hereby certify that I found an aluminum monument placed at the $\frac{1}{4}$ section corner which was located and placed by Don Barnes, County Surveyor of Rock County, November 24, 1980. He states that the monument was located by single proportion method and that it is in harmony with the land owner's testimony who resides in the SE $\frac{1}{4}$ of Section 24, T1N R14E at this time.

DATE OF SURVEY: 6-12-92 Lloyd P. Jensen S - 211
 REGISTERED LAND SURVEYOR

A-32

FORM PREPARED BY SOUTHEASTERN WISCONSIN REGIONAL PLANNING COMMISSION