

U.S. PUBLIC LAND SURVEY MONUMENT RECORD

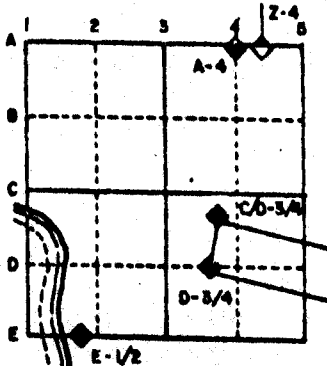
For Public Land Survey Corners in the
T. 2 N., R. 11 E.

CORNER CODE INDEX

	1	2	3	4	5	6	7	8	9	10	11	12	13	14	15	16	17	18	19	20	21	22	23	24	25
A																									
B																									
C	6	5	4	3	2																				
D																									
E																									
F																									
G	7	8	9	10	11	12																			
H																									
I																									
J																									
K																									
L	15	17	16	15	14	13																			
M																									
N																									
O																									
P	19	20	21	22	23	24																			
Q																									
R																									
S																									
T	30	29	28	27	26	25																			
U																									
V																									
W																									
X																									
Y	31	32	33	34	35	36																			
Z																									

PLACE MONUMENT SYMBOL (◆) AT PROPER LOCATION ON ABOVE INDEX

EXAMPLE



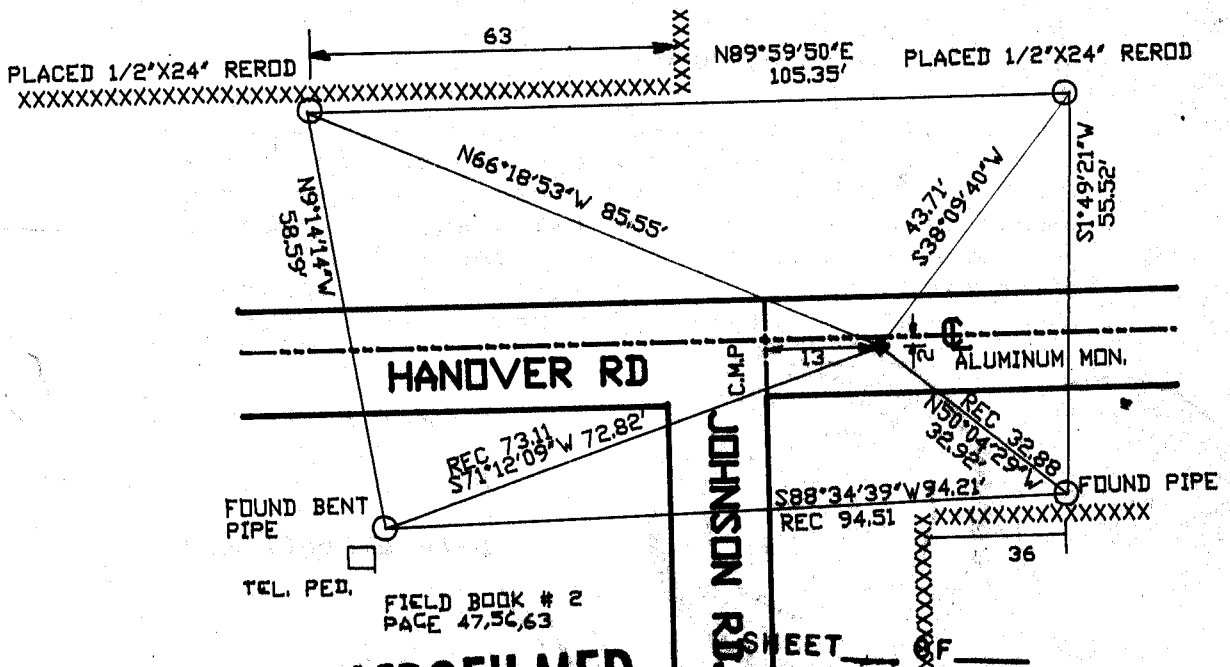
PLYMOUTH TWP
ROCK COUNTY WI

IF AVAILABLE
STATE PLANE COORDINATES

North (Y) _____ Eleve. (Z) _____
 East (X) _____ Zone _____
 Hor. Datum _____ Vert. Datum _____

e.) ◆ CORNER MONUMENT ○ WITNESS MONUMENT

BEARINGS ARE BASED ON: ASSUMED



MICROFILMED

CORNER CODE: **E 25**

(B) Describe any record evidence, monument evidence, occupational evidence, testimonial evidence or any other material evidence you considered, and whether the monument was found or placed.

1833 MULLETT ORIGINAL GOVERNMENT SURVEYOR. FIELD NOTES - NORTH ON EAST SIDE OF SECTION 12 PLYMOUTH TOWNSHIP. SET POST CORNER SECTIONS 1 & 12. BUR OAK 8 N 1/2W 8.75 & BUR OAK 8 S73W 3.88

1834 HARRISON ORIGINAL GOVERNMENT SURVEYOR. FIELD NOTES - INTERSECTED WEST BOUNDARY 72.60 SOUTH OF POST AND MARKED SAME. NO TREES. SHOWS A DISTANCE OF 2689.50' TO S 1/4 CORNER OF SECTION 6.

1854 McVEAN VOL 1 PG 23. SHOWS A DISTANCE OF 2636.70 TO W 1/4 CORNER AND 2670.36 TO S 1/4 CORNER OF SECTION 6.

1867 LEE VOL 1 PG 331 FOUND STAKE SET BY LOCKE. SHOWS A DISTANCE OF 2644.46 FROM THE E 1/4 CORNER TO NE CORNER OF SECTION 12 PLYMOUTH TOWNSHIP.

1868 LOCKE PLYMOUTH TOWNSHIP REMONUMENTATION FIELD NOTES. NORTH ON EAST LINE SECTION 12. INTERSECTED 1/4 LINE 1.32' WEST OF CORNER. FOUND NORTH B.T. AND STUMP OF SOUTH B.T. AND STAKE. NORTH B.T. 15 N79W. MEASURED 2653.20' TO SE CORNER OF SECTION 12 AND 2653.20 TO NE CORNER OF SECTION 12 PLYMOUTH TOWNSHIP.

1870 RUGER VOL 2 PG 43 FOUND STONE MONUMENT SET BY LOCKE.

1876 RUGER VOL 2 PG 205 CALLS FOR STONE MONUMENT. SHOWS A DISTANCE OF 2645.94 FROM E 1/4 CORNER TO NE CORNER OF SECTION 12 PLYMOUTH TOWNSHIP.

1974 LEE VOL 5 PG 53 CORNER SET BY DOUBLING DISTANCE AND LINE BETWEEN THE W 1/16 CORNER OF THE NW 1/4 OF SECTION 7 AND THE W 1/4 CORNER OF SECTION 7. HE REFERENCED SAME. SHOWS A DISTANCE OF 2666.27 TO S 1/4 CORNER OF SECTION 6 AND 2648.62 TO W 1/4 CORNER OF SECTION 7.

1980 BARNES VOL 6 PG 29 SHOWS A DISTANCE TO THE W 1/4 CORNER OF SECTION 7 OF 2644.45 BY LOCKE (1867) AND LOCKE 2653.20.

1983 BARNES VOL 6 PG 307. THE WEST LINE OF NW 1/4 OF SECTION 7. DEPICTS DIFFERENT DISTANCES AND MONUMENTS FOUND OR SET. SEE VOL 5 PAGE 53 AND VOL 4 PAGES 587 AND 588.

BY USING LOCKE'S 1868 DISTANCES OF THE REMONUMENTATION OF PLYMOUTH TOWNSHIP IT SEEMS THAT THE CORNER SHOULD BE ABOUT 13 TO THE WEST AND ABOUT 5 TO THE NORTH. A CMP NOW OCCUPIES THIS SPACE, I DID NOT EXCAVATE. SINCE I DO NOT HAVE EVIDENCE TO DISPUTE HUGH LEES POSITION, I ACCEPTED THE LOCATION AND PLACED AN ALUMINUM MONUMENT. THE FOLLOWING DISTANCES SUPPORT THE CONCEPT THAT THE CORNER WAS PROBABLY TO THE WEST:

1. THE DISTANCE TO A CUT LIMESTONE AT THE S 1/4 CORNER OF SECTION 1 PLYMOUTH IS 2629.44 (LOCKE 2616.90)
2. THE DISTANCE TO A CUT LIMESTONE AT THE W 1/4 CORNER OF SECTION 6 IS 2661.79 (LOCKE 2657.82).
3. THE DISTANCE TO A CUT LIMESTONE AT THE W /4 CORNER OF SECTION 7 IS 2647.50 (LOCKE 2653.20).
4. THE DISTANCE TO THE S 1/4 CORNER OF SECTION 6 IS 2666.13 (McVEAN 2670.36).

C) Was the corner restored through acceptance of (1) an obliterated evidence location, or, (2) a found perpetuated location?

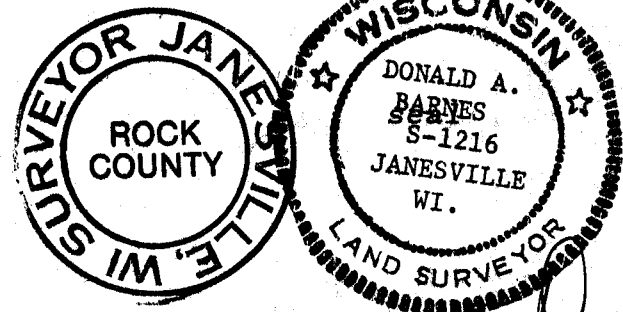
ACCEPTED FOUND EVIDENCE.

I, Donald Barnes, hereby certify that the corner points as identified by the corner code index were, in a field survey on, July 19, 1990, established, re-established, monumented, re-monumented, recovered or restored as expressed below and in conformance with the regulations and rules as required in the current manual of survey instructions of the United States Department of Interior, Bureau of Land Management.

COUNTY SURVEYOR FILING DATA

Date of computer entry _____

Date microfilmed _____



Donald Barnes