

U.S. PUBLIC LAND SURVEY MONUMENT RECORD

For Public Land Survey Corners in:

WI ADMINISTRATIVE CODE A-E 7.08 REQUIREMENT

T. 2N., R. 11E

CORNER CODE INDEX

| | | | | | | | | | | | | | | | | | | | | | | | | |
|---|----|---|---|---|---|---|---|---|----|----|----|----|----|----|----|----|----|----|----|----|----|----|----|----|
| A | 2 | 3 | 4 | 5 | 6 | 7 | 8 | 9 | 10 | 11 | 12 | 13 | 14 | 15 | 16 | 17 | 18 | 19 | 20 | 21 | 22 | 23 | 24 | 25 |
| B | | | | | | | | | | | | | | | | | | | | | | | | |
| C | 6 | | | | | | | | | | | | | | | | | | | | | | | |
| D | | | | | | | | | | | | | | | | | | | | | | | | |
| E | | | | | | | | | | | | | | | | | | | | | | | | |
| F | 1 | | | | | | | | | | | | | | | | | | | | | | | |
| G | | | | | | | | | | | | | | | | | | | | | | | | |
| H | | | | | | | | | | | | | | | | | | | | | | | | |
| I | | | | | | | | | | | | | | | | | | | | | | | | |
| J | | | | | | | | | | | | | | | | | | | | | | | | |
| K | 18 | | | | | | | | | | | | | | | | | | | | | | | |
| L | | | | | | | | | | | | | | | | | | | | | | | | |
| M | | | | | | | | | | | | | | | | | | | | | | | | |
| N | | | | | | | | | | | | | | | | | | | | | | | | |
| O | | | | | | | | | | | | | | | | | | | | | | | | |
| P | 19 | | | | | | | | | | | | | | | | | | | | | | | |
| Q | | | | | | | | | | | | | | | | | | | | | | | | |
| R | | | | | | | | | | | | | | | | | | | | | | | | |
| S | 30 | | | | | | | | | | | | | | | | | | | | | | | |
| T | | | | | | | | | | | | | | | | | | | | | | | | |
| U | | | | | | | | | | | | | | | | | | | | | | | | |
| V | | | | | | | | | | | | | | | | | | | | | | | | |
| W | | | | | | | | | | | | | | | | | | | | | | | | |
| X | 31 | | | | | | | | | | | | | | | | | | | | | | | |
| Y | | | | | | | | | | | | | | | | | | | | | | | | |
| Z | | | | | | | | | | | | | | | | | | | | | | | | |

PLYMOUTH TWP

ROCK COUNTY WI

IF AVAILABLE
ROCK COUNTY COORDINATES PREFERRED

North _____ Elev. _____

East _____

Hor. Datum _____ Vert. Datum _____

LATITUDE _____ ELLIPS. HT. _____

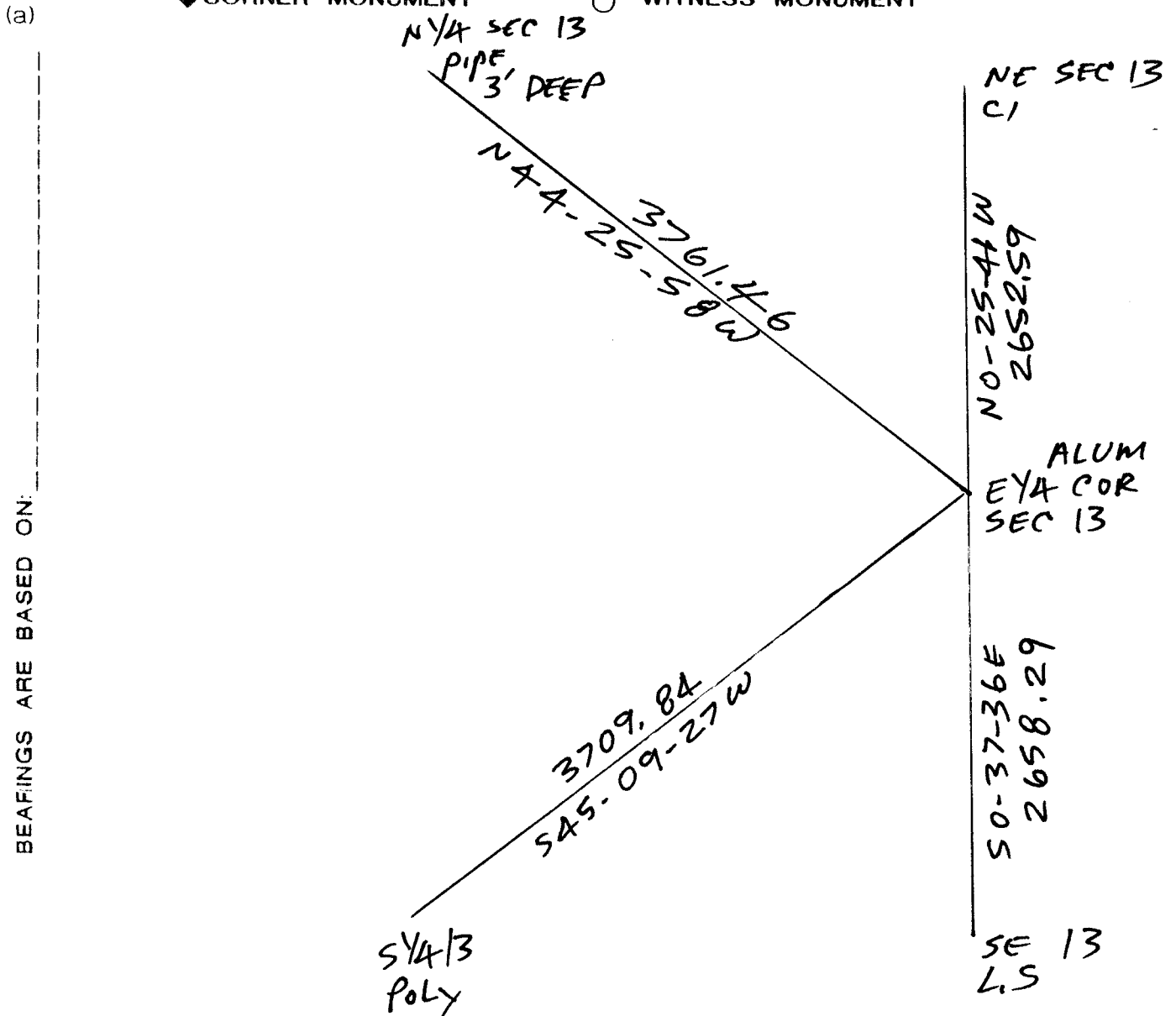
LONGITUDE _____

GPS (X) _____ TRAVERSE (X) _____

BASED ON THE FOLLOWING CONTROL:

PLACE MONUMENT SYMBOL \blacklozenge AT PROPER LOCATION ON ABOVE INDEX

\blacklozenge CORNER MONUMENT \circ WITNESS MONUMENT



OBSERVATION SHEETS 3546

FIELD BOOK _____ PAGE # _____

SHEET 1 OF 1

SHOW A PLAN VIEW DRAWING DEPICTING THE CORNER MONUMENT AND SURROUNDING PHYSICAL FEATURES, INCLUDING THE EXCAVATION AREA AND DEPTH.

PLANNING & ZONING COMMITTEE ADOPTED THE ABOVE FORM ON 12/2/1982

CORNER CODE L-25

PL560

(B) Describe any record evidence, monument evidence, occupational evidence, testimonial evidence or any other material evidence you considered, and whether the monument was found or placed.

1833 MULLET ORIGINAL GOVERNMENT SURVEYOR.

NORTH ON EAST SIDE OF SECTION 13

- 99 LEAVE MARSH
2640 SET QUARTER SECTION POST BUR OAK 16 S1W 99'
BUR OAK N28W 95.04'
3135 LEAVE TIMBER AND ENTER PRAIRIE
5280 SET POST CORNER SECTIONS 12 & 13 BUR OAK 10
S89E 210.54' BUR OAK 14 N10W 286.44' LAND
FIRST 1/2 TIMBERED WITH BUR BLACK AND WHITE OAK
LAST 1/2 LEVEL PRAIRIE SEPT 10TH 1833
- 1861 RUGER VOL 1 PG 172 VAR 7-00 2655.18 TO CENTER SEC 13 &
VAR 7-00 5310.36 TO W 1/4 COR SEC 13
- 1868 LOCKE PG 27 NORTH ON EAST LINE SEC 13 VAR 7-08
2654.85 INTERSECTED 1/4 LINE 7.59' EAST OF COR. FOUND
SOUTH BT. COR 3.3' EAST OF COR POST TO FENCE
RUNNING WEST VAR CORRECTED 7-18
CONTINUED NORTH FROM 1/4 COR WITH VAR 7
5309.37 INTERSECTED NORTH BOUNDARY AT COR FOUND
STUMPS OF BTS AND STAKE COR .33' EAST OF N & S
FENCE AND 17.16' NORTH OF E & W FENCE
- 1870 RUGER VOL 2 PG 33 STONE MON. SET BY LOCKE. 2681.09 TO
CENTER SEC 13 & 5305.58 TO W 1/4 COR SEC 13
- 1898 TWP RD REC. BK 2 PG 23 BEGINNING 24' 9" WEST FROM THE
NE COR OF THE SE 1/4 OF SEC 12 IN SAID TOWN FOR A POINT
OF BEGINNING AND RUNNING FROM SAID PT OF BEGINNING
SOUTHERLY ALONG THE TOWN LINE BETWEEN THE TOWNS OF
PLYMOUTH AND ROCK TO A PT 24' AND 9" WEST FROM THE SE
COR OF THE NE 1/4 OF SEC 13 IN SAID TOWN FOR A POINT OF
TERMINATION, THE SAME BEING AN ACCURATE SURVEY OF
SAID HWY . THE LINE OF SAID SURVEY IS THE CENTER OF SAID
HWY AND THE SAME IS LAID OUT OF THE WIDTH OF 49.5'
- 1964 BATTERMAN JR. VOL 4 PG 199 FD STONE MON. N 232,864.67
(WPL); E/W 2,345,106.58
- 1974 LEE VOL 4 PG 589 DUG & FD CUT STONE. REF. SAME
- 1976 NORMAN TRUE VOL 5 PG 186 S89-24-28E 2709.94 TO
CENTER SEC 18 & 2643.78 FROM CENTER SEC 18 TO E 1/4 COR
SEC 18. BEARINGS & DISTANCES ARE COMPUTED FROM STATE
PLANE COORDINATES.
- 1980 BARNES VOL 6 PG 29 & 282 WPL 232,864.67; E/W
2,234,106.58. LAT 42-38-20 7 LONG 89-07-48. N1-03-48W
2654.32 (STATE PLANE) TO NE COR SEC 13. COMPUTED FROM
DATA VOL 4 PG 587
- 1990 BARNES L-1(ROCK TWP) FD PK & REPLACED IT WITH ALUM.
MON. PK IN HARMONY WITH FD REF. MONUMENTS & REC.
DISTANCES
- 2001 COMBS MAP #14241 ALUM. N89-43-40W 2632.75 TO CEN
SEC 13, S89-24-25E 2710.25 CEN SEC 18, & S1-15-35E
2625.48 TO SE COR SEC 13.
- 2002 ERICKSON FED PRELIMINARY NAD83 232,872.464 N/W;
2,202,569.519 E/W. REDUCED TO COUNTY 251884.007 N/S;
464,405.245 E/W. S01-15-57E 2658.16 NAD83 TO SE COR
SEC 13, N89-44-16W 5320.89 NAD83 TO W 1/4 COR SEC 13.

C) Was the corner restored through acceptance of (1) an obliterated evidence location, or, (2) a found perpetuated location?

USED MY ROCK TWP PROJ. OBSERVATIONS. ACCEPTED ALUM. MON.
WHICH PERPETUATED CUT L.S. THAT LEE FD IN 1974

I, Donald Barnes, hereby certify that the corner location as identified by the corner code index was determined by me under my direction and control and that this U.S. Public Land Survey Monument Record is correct and complete to the best of my knowledge and belief.

Seal

SHEET 1 OF 1 CORNER CODE L-25

Encls

2-25-03

Donald Barnes

A.E. 7.08 REQUIREMENT