

U.S. PUBLIC LAND SURVEY MONUMENT RECORD

For Public Land Survey Corners in:

WI ADMINISTRATIVE CODE A-E 7.08 REQUIREMENT

T. 2N., R. 11E

CORNER CODE INDEX

A	1	2	3	4	5	6	7	8	9	10	11	12	13	14	15	16	17	18	19	20	21	22	23	24	25
B	6					5					4				3						2				1
C																									
D																									
E																									
F																									
G	1																								
H		8																							
I			9																						
J				10																					
K					11																				
L	18					11																			
M							16																		
N								15																	
O									14																
P										13															
Q																									
R	19						20																		
S								21																	
T									22																
U										23															
V											24														
W																									
X																									
Y																									
Z																									

PLYMOUTH TWP
ROCK COUNTY WI

IF AVAILABLE
ROCK COUNTY COORDINATES PREFERRED

North _____ Elev. _____

East _____

Hor. Datum _____ Vert. Datum _____

LATITUDE _____ ELLIPS. HT. _____

LONGITUDE _____

GPS (X) _____ TRAVERSE (X) _____

BASED ON THE FOLLOWING CONTROL:

PLACE MONUMENT SYMBOL AT PROPER LOCATION ON ABOVE INDEX

CORNER MONUMENT

WITNESS MONUMENT

(a)

BEARINGS ARE BASED ON:

FIELD BOOK _____ PAGE # _____

SHEET 1 OF 4

SHOW A PLAN VIEW DRAWING DEPICTING THE CORNER MONUMENT AND SURROUNDING PHYSICAL FEATURES, INCLUDING THE EXCAVATION AREA AND DEPTH.

PLANNING & ZONING COMMITTEE ADOPTED THE ABOVE FORM ON 12/2/1982

CORNER CODE V-25

PL613

(B) Describe any record evidence, monument evidence, occupational evidence, testimonial evidence or any other material evidence you considered, and whether the monument was found or placed.

1833 MULLETT NORTH ON EAST SIDE SECTION 25

2640 SET QUARTER SECTION POST BLACK OAK 12 S9W
117.48' BLACK OAK 8 N1W 314.16'

3168 ENTER PRAIRIE

3762 LEAVE PRAIRIE AND ENTER MARSH

5280 SET POST CORNER SECTION 24 & 25 AND RAISED A
MOUND LAND FIRST $\frac{3}{4}$ ROLLING SECOND RATE
TIMBERED WITH WHITE BLACK AND BUR OAK ASPENS C
LAST $\frac{1}{4}$ MARSH

NORTH ON EAST SIDE SECTION 36 VAR 8-00 E

1758.9 WHITE OAK 16 IN DIAMETER

2640 SET QUARTER SECTION POST WHITE OAK 12 N22W
16.5'; WHITE OAK 16 S12W 15.18'

5280 SET POST CORNERS SECTIONS 25 & 36 WHITE OAK
12 N59W 227.7'; WHITE OAK 18 S70W 239.58'
LAND ROLLING SECOND RATE TIMBERED WITH
WHITE BLACK AND BUR OAK.

1833 HARRISON EAST ON RANDOM BETWEEN
SECS 25 & 36 (VAR 8-00E)

2640 TEMPY $\frac{1}{4}$ P

5273.4 INT. E BDY 62.04' NORTH OF POST. LAND BDG 1ST
RATE, TIMBER RED & W.O. ASPEN CHERRY ELM WALNUT
& ? OF HAZEL WEEDS
WEST COR. WEST

392.04 W.O. 36

918.72 W.O. 18

2636.7 QUARTER SEC COR. WALNUT 15 N72E 6.60'; WALNUT
24 S33W 3.96' WALNUT 15 WALNUT 24} MARKER

4224 ELM 12

4953.96 W.O. 12

5273.4 SEC COR.

1834 HARRISON WEST ON RAND BET 30 & 31 T2N R12E

2640 TEMPY $\frac{1}{4}$ SEC COR

5331.48 INT. W BDY 15.84' S OF P LAND BDY 2ND RATE WITH
WO & RED O TIMBER LAST $\frac{1}{2}$ MILE MUCH
UNDERGROWTH. HAZEL ???

COR EAST

2691.48 $\frac{1}{4}$ SEC COR {WO 24 S77E 181.5' RED O 12 S71W
W.O. 24 RED O 12} MARKED

5331.48 SEC COR

1852 McVEAL VOL 1 PG 14 2655.18 TO N $\frac{1}{4}$ COR SEC 36.

1854 TOWN ROAD RECORDS BK 1 PG 35 BEGINNING AT THE NE
COR OF SEC 25 IN THE TOWN OF PLYMOUTH RUNNING THENCE
SOUTH ON THIS TOWN LINE BETWEEN SAID TOWNS TO THE SOUTH
LINE OF THE TOWNS AFORESAID; AND THAT THE ""

1868 LOCKE PG 4 SOUTH ON EAST SIDE OF SEC 25 VAR 6-50

1320 LEFT MARSH

2659.8 INTERSECTED $\frac{1}{4}$ LINE 20.46' E OF COR. FOUND
STUMPS OF B.T.S AND OLD STAKE COR 1.32' EAST
AND 17.49' SOUTH OF COR POST TO FENCE ON
WEST SIDE OF LANE RUNNING NORTH VAR
CORRECTED 6-23 $\frac{1}{2}$

CONTINUED SOUTH FROM $\frac{1}{4}$ COR WITH VAR 6-45

5308.71 INTERSECTED SOUTH BOUNDARY AT COR. FOUND
STONE (SET BY CHURCH) & WHERE B.T.S WERE
DUG OUT COR IN CENTER OF HIGHWAYS.

PG 5 WEST BETWEEN SECS 25 & 36 VAR 5-40

2659.14 INTERSECTED $\frac{1}{4}$ LINE 10.56' SOUTH OF COR. FOUND
WHERE BTS WERE DUG OUT AND OLD STAKE. COR
20.46' SOUTH OF FENCE ON NORTH

Donald Bamey

SHEET 1 OF 4 CORNER CODE V-25

6-20-03

SIDE OF HIGHWAY AND IN LINE WITH FENCE RUNNING NORTH VAR CORRECTED 5-26

CONTINUED WEST FROM 1/4 COR WITH VAR 5-40

5304.42 INTERSECTED WEST BOUNDARY 48.18' SOUTH OF COR. FOUND COR AS SET BY SELF (SEE COUNTY SURVEYORS RECORD SEC 26) AND STUMP OF B.T. IN SEC 26 VAR CORRECTED 4-38 COR IN CENTER OF HIGHWAYS AUG 18 1868

PG 7 SOUTH ON EAST LINE SEC 36 VAR 7-25

2661.12 INTERSECTED 1/4 LINE 3.3' EAST OF COR. FOUND STUMPS OF B.T.S AND OLD STAKE. VAR CORRECTED 7-21

CONTINUED SOUTH FROM 1/4 COR WITH VAR 7-25

5311.68 INTERSECTED SOUTH BOUNDARY 5.61' WEST OF COR FOUND STUMPS OF B.T.S AND OLD STAKE VAR CORRECTED 7-32 AUG 19, 1868

1870 RUGER VOL 2 PG 46 STONE MON SET BY LOCKE.

1874 RUGER VOL 2 PG 127 STONE MON.

1895 TWP RD REC BK 2 PG 19 COMMENCING AT THE NORTH END OF A HWY AT OR NEAR THE S.W. COR OF THE NW 1/4 OF SEC 30 OF THE TOWN OF ROCK AND THE S.E. COR OF THE NE 1/4 OF SEC 25 OF THE TOWN OF PLYMOUTH; THENCE RUNNING NORTH ABOUT 1 MILES TO THE 1/4 POST OF SEC 24, OF THE TOWN OF PLYMOUTH AND OF SEC 19 OF THE TOWN OF ROCK; THENCE AT AN ANGLE OF 20 TO A PT 33' EAST OF THE LINE BETWEEN THE SAID TOWNS, THENCE NORTH UPON SAID 33' EAST OF PARALLEL WITH SAID TOWN LINE ABOUT 247.5'; THENCE WEST AT AN ANGLE OF 20 DEGREES TO THE TOWN LINE BETWEEN SAID TOWNS, THENCE NORTH UPON THE TOWN LINE BETWEEN SAID TOWNS TO THE NE COR SEC 24 OF THE TOWN PLYMOUTH AND THE NW COR OF SEC 19 OF THE TOWN OF ROCK TO INTERSECT A HWY IN THE TOWN OF ROCK RUNNING EAST FROM SAID PT OF TERMINATION, THE SAME BEING AN ACCURATE SURVEY THEREOF CAUSED BY US TO BE MADE AND SAID HWY BEING UPON THE TOWN LINE BETWEEN SAID TOWNS OR AS NEAR TO AS THE SITUATION OF THE GROUND WILL ADMIT, THE LINE OF SAID SURVEY IS THE CENTER OF SAID HWY AND THE SAME IS LAID OUT OF THE WIDTH OF 66'.

1965 BATTERMAN VOL 4 PG 222 FD CUT STONE & REF SAME.

1965 WIDOT MAP #07512 PROJECT S11-01(1) STATES NOTHING ABOUT MON. BEARINGS SHOWN ON THIS PLAT ARE THE TRUE BEARINGS OF EACH TANGENT TO THE NEAREST. NB9-32W TO N 1/4 COR SEC 36, S1-01E TO E 1/4 COR SEC 36, & NO-48W TO E 1/4 COR SEC 25.

1966 BATTERMAN VOL 4 PG 285 STATE TIES. LAND MARKS ARE CUT CROSS IN BRASS DISK IN 8" CONG. MON. {REF MON}

1966 DOT MAP #07516

1966 BATTERMN VOL 4 PG 260 REF. WITH 1" PIPES

1970 SHIMEALL CSM VOL 1 PG 281 STATES NOTHING ABOUT MON.

1972 LEE VOL 4 PG 577 SEE VOL 4 PG 260 S88-50-00E 2696.82 TO N 1/4 COR SEC 31 ROCK TWP, NORTH 2647.32 TO E 1/4 COR SEC 25, WPL COORDINATES 219,604.05; 2,234,410.54

1974 COMBS CSM VOL 4 PG 170 & 268 & 269 1" PIPE IN MON BOX

1977 COMBS CSM VOL 7 PG 71 1" PIPE IN MON. BOX

1981 BARNES VOL 6 PG 144 N1-22-22W 2647.21 TO E 1/4 COR SEC 25, S1-37-56E 2658.55 TO E 1/4 COR SEC 36, & NB9-47-31E 2698.41 TO N 1/4 COR SEC 31 ROCK TWP

1986 BARNES V-1 (ROCK TWP) FD 1" PIPE IN MON BOX. & REFERENCED SAME.

1987 LEE MAP #12792 PIPE IN MON. BOX

1992 SCHROEDER CSM VOL 15 PG 382 STATES NOTHING ABOUT MON.

FD 1" PIPE IN MON. BOX & REFERENCE MONUMENTS. SET ADDITIONAL REFERENCE MONUMENTS.

Donald Barnes

6-20-03

PL613

C) Was the corner restored through acceptance of (1) an obliterated evidence location, or, (2) a found perpetuated location?

ACCEPTED FD PIPE IN MON. BOX WHICH, PERPETUATES FD CUT L.S.

D) Describe any material discrepancy between the location of the corner as restored or reestablished and the location of that corner as previously restored or reestablished by distance and direction. Show the discrepancy on the plan view drawing under (a), above. Show the distances between the corner as previously restored or reestablished and (1) the corner as restored or reestablished, and (2) to at least 4 of the witness monuments shown on the drawing in (a), above.

(E) Was the corner reestablished through lost corner proportionate methods? If so, show the method, including the directions and distances to other public land survey corners used as evidence or used for proportioning the corner location.

I, **Donald Barnes**, hereby certify that the corner location as identified by the corner code index was determined by me under my direction and control and that this U.S. Public Land Survey Monument Record is correct and complete to the best of my knowledge and belief.

Seal

Donald Barnes
6-20-03

Emboss

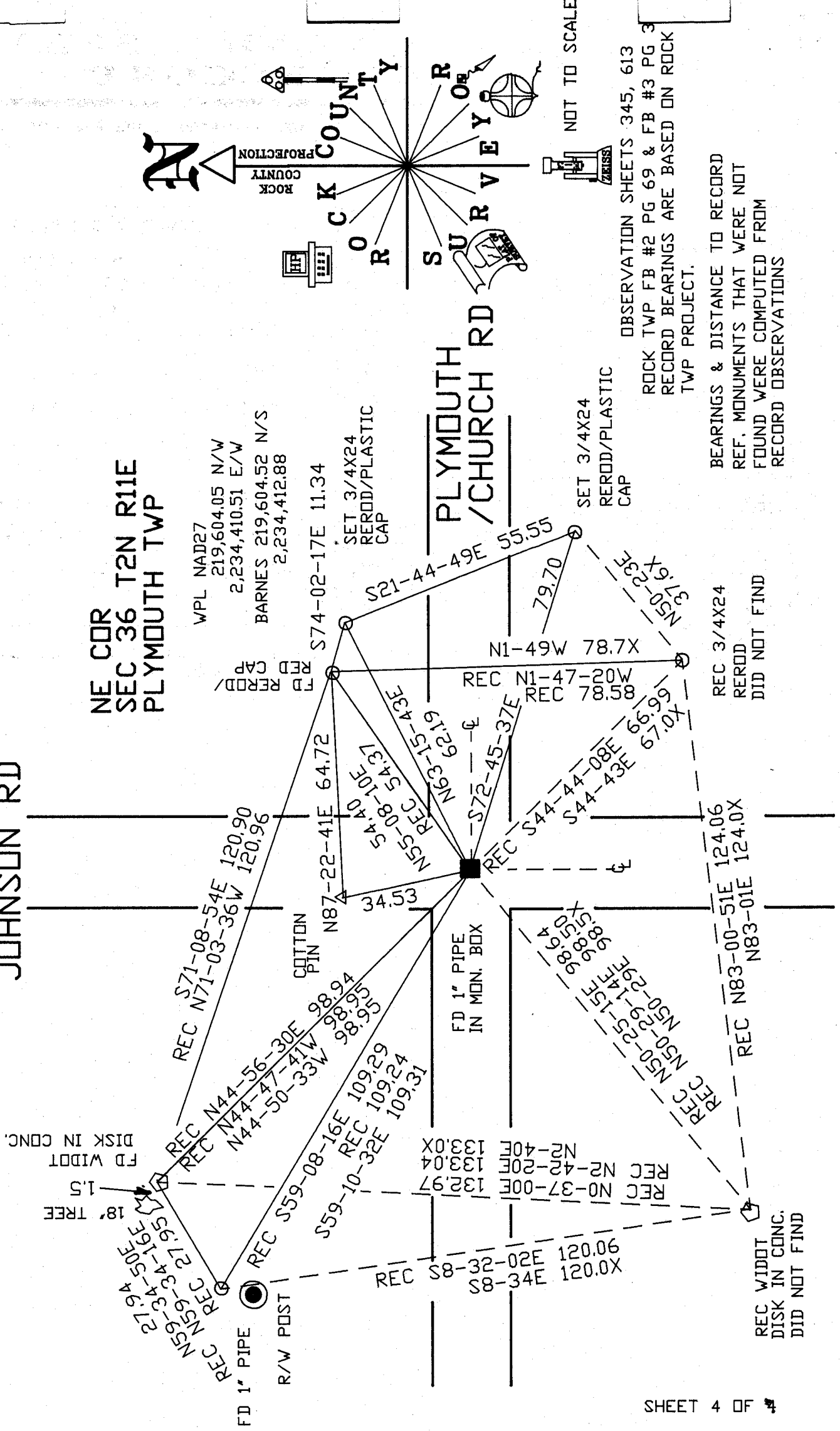
SHEET 3 OF 4

CORNER CODE **V-25**

A-E 7.08 REQUIREMENT

JOHNSON RD

NE COR
SEC 36 T2N R11E
PLYMOUTH TWP



WPL NAD27
219,604.05 N/W
2,234,410.51 E/W
BARNES 219,604.52 N/S
2,234,412.88

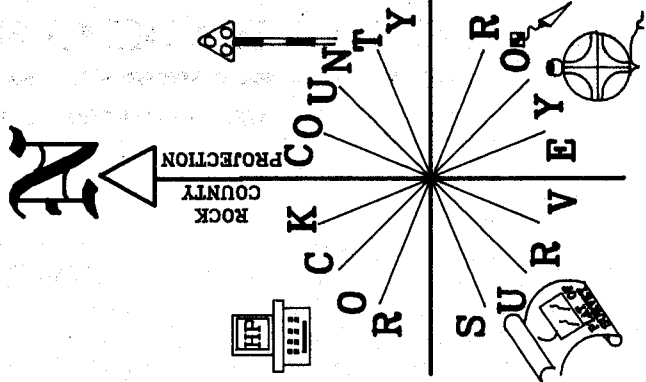
SET 3/4X24
REROD/PLASTIC
CAP

SET 3/4X24
REROD/PLASTIC
CAP

REC 3/4X24
REROD
DID NOT FIND

REC N83-00-51E 124.06
REC N83-01E 124.0X

REC WIDDT
DISK IN CONG.
DID NOT FIND



NOT TO SCALE

OBSERVATION SHEETS 345, 613
ROCK TWP FB #2 PG 69 & FB #3 PG 3
RECORD BEARINGS ARE BASED ON ROCK
TWP PROJECT.

BEARINGS & DISTANCE TO RECORD
REF. MONUMENTS THAT WERE NOT
FOUND WERE COMPUTED FROM
RECORD OBSERVATIONS

EMBOSSSED SEAL

Daniel Barnes
6-20-03

V-25