

U.S. PUBLIC LAND SURVEY MONUMENT RECORD

For Public Land Survey Corners In:
T. 3 N. R. 14 E. 4th P.M.
CORNER CODE INDEX

WI ADMINISTRATIVE CODE A-E 7.08 REQUIREMENT
REV 10/23/2004 USMONREC.DWG

JOHNSTOWN TWP

ROCK COUNTY WI

IF AVAILABLE
ROCK COUNTY COORDINATES PREFERRED

North 277255.45 Elev. _____

East 540748.59

Hor. Datum _____ Vert. Datum _____

LATITUDE _____ ELLIPS. HT. _____

LONGITUDE _____

NAD83(91) _____ NETWORK ADJ. YR _____

GPS (X) _____ TRAVERSE (X) _____

BASED ON THE FOLLOWING CONTROL:

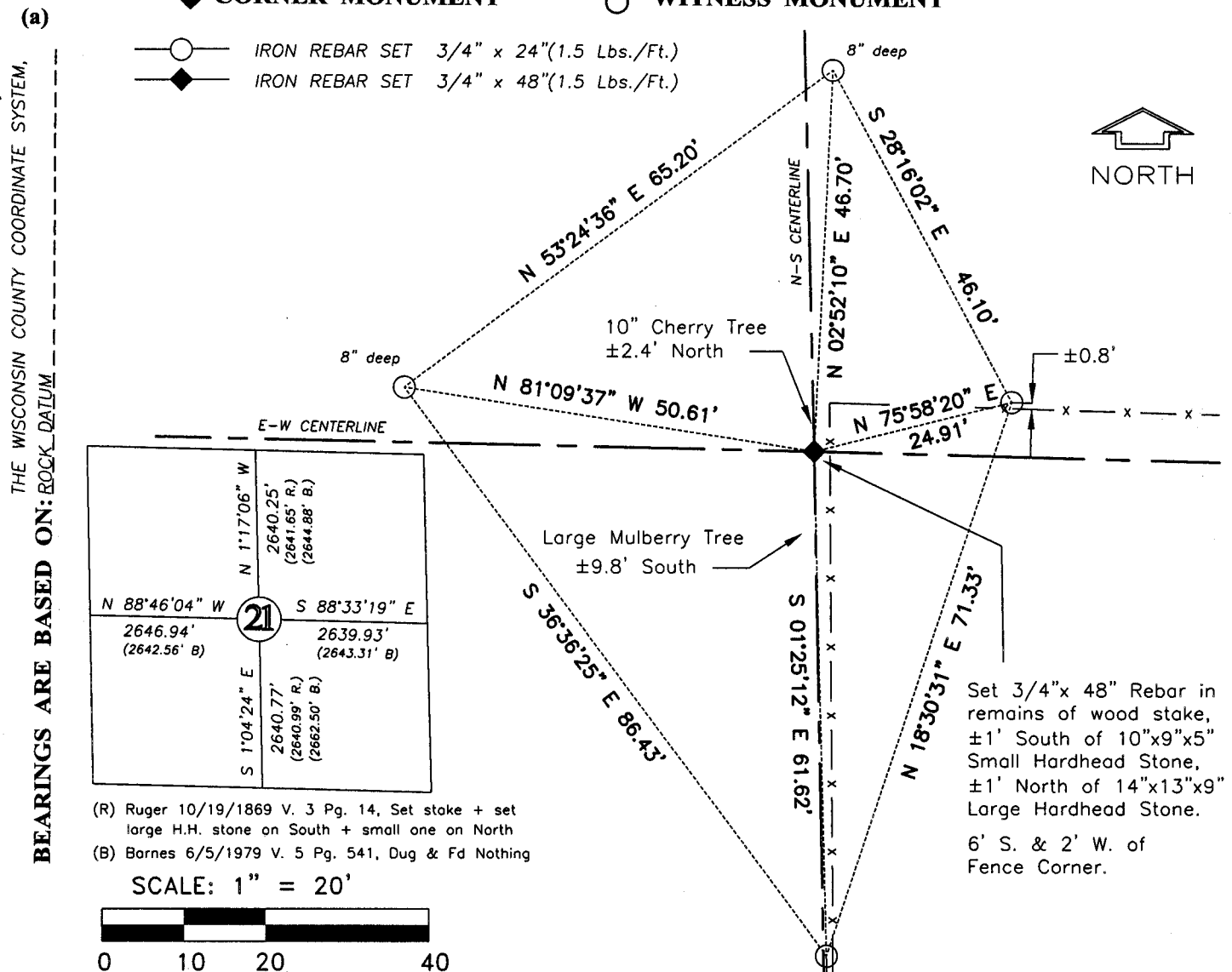
WISCONSIN COUNTY COORDINATE SYSTEM, ROCK

1	2	3	4	5	6	7	8	9	10	11	12	13	14	15	16	17	18	19	20	21	22	23	24	25	
A	6																								A
B		5																							B
C			4																						C
D				3																					D
E					2																				E
F						1																			F
G	7																								G
H		8																							H
I			9																						I
J				10																					J
K					11																				K
L						12																			L
M	18																								M
N		17																							N
O			16																						O
P				15																					P
Q					14																				Q
R						13																			R
S							10																		S
T								11																	T
U									12																U
V										13															V
W											14														W
X												15													X
Y													16												Y
Z														17											Z
1	2	3	4	5	6	7	8	9	10	11	12	13	14	15	16	17	18	19	20	21	22	23	24	25	

PLACE MONUMENT SYMBOL \blacklozenge AT PROPER LOCATION ON ABOVE INDEX

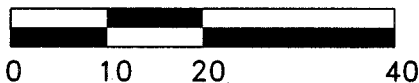
\blacklozenge CORNER MONUMENT

\circ WITNESS MONUMENT



(R) Ruger 10/19/1869 V. 3 Pg. 14, Set stake + set large H.H. stone on South + small one on North
(B) Barnes 6/5/1979 V. 5 Pg. 541, Dug & Fd Nothing

SCALE: 1" = 20'



I, Jeffrey R. Garde, hereby certify that the corner location as identified by the corner code index was determined by me under my direction and control and that this U.S. Public Land Survey Monument Record is correct and complete to the best of my knowledge and belief.

FIELD BOOK _____ PAGE # _____ SHEET _____ OF _____
SHOW A PLAN VIEW DRAWING DEPICTING THE CORNER MONUMENT AND SURROUNDING PHYSICAL FEATURES, INCLUDING THE EXCAVATION AREA AND DEPTH.

PLANNING & ZONING COMMITTEE ADOPTED THIS FORM ON 12/2/1982

CORNER CODE P-11

(B) Describe any record evidence, monument evidence, occupational evidence, testimonial evidence or any other material evidence you considered, and whether the monument was found or placed.

1869 – V.3 Pg. 14 – Ruger - set stake and set large hard head stone on the South and small one on north

1979 – V.5 Pg. 541 – Barnes – Dug & Found Nothing

Dug and Found remains of wooden stake 15" deep, with a 10"x9"x5" hard head stone ±1 ft. North and a 14"x13"x9" hard head stone ±1 ft South, 6' South and 2' West of fence corner. Placed a ¾" x 48" rebar in the center of the remains of wooden stake. Photos are on file at Batterman

C) Was the corner restored through acceptance of (1) an obliterated evidence location, or, (2) a found perpetuated location?

2. a found perpetuated location

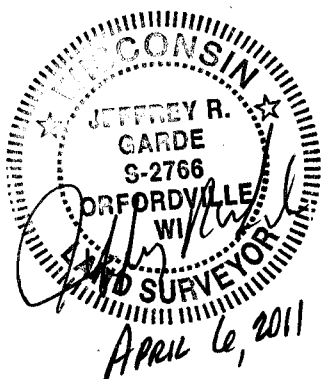
D) Describe any material discrepancy between the location of the corner as restored or reestablished and the location of that corner as previously restored or reestablished by distance and direction. Show the discrepancy on the plan view drawing under (a), above. Show the distance: between the corner as previously restored or reestablished and (1) the corner as restored or reestablished, and (2) to at least 4 of the witness monuments shown on the drawing in (a), above.

(E) Was the corner reestablished through lost corner proportionate methods? If so, show the method, including the directions and distances to other public land survey corners used as evidence or used for proportioning the corner location.

No.

I, Jeff Garde, hereby certify that the corner location as identified by the corner code index was determined by me under my direction and control and that this U.S. Public Land Survey Monument Record is correct and complete to the best of my knowledge and belief.

Seal



SHEET 2 OF 2

CORNER CODE

P-11

A-E 7.08 REQUIREMENT