

U.S. PUBLIC LAND SURVEY MONUMENT RECORD

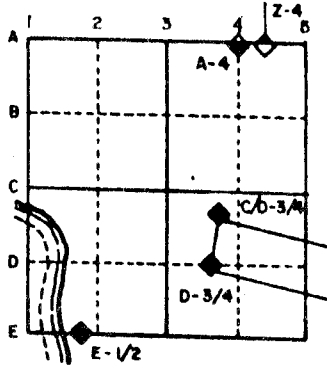
For Public Land Survey Corners in the
T. 1 N., R. 14 E.

CORNER CODE INDEX

	1	2	3	4	5	6	7	8	9	10	11	12	13	14	15	16	17	18	19	20	21	22	23	24	25
A																									
B																									
C	6																								
D		5																							
E			4																						
F				3																					
G					2																				
H																									
I																									
J																									
K																									
L																									
M																									
N																									
O																									
P																									
Q																									
R																									
S																									
T																									
U																									
V																									
W																									
X																									
Y																									
Z																									

PLACE MONUMENT SYMBOL (◆) AT PROPER LOCATION ON ABOVE INDEX

EXAMPLE



CLINTON TWP
ROCK COUNTY WI

IF AVAILABLE
STATE PLANE COORDINATES

North (Y) _____ Eleve. (Z) _____
East (X) _____ Zone _____
Hor. Datum _____ Vert. Datum _____

(a.)

◆ CORNER MONUMENT

○ WITNESS MONUMENT

BEARINGS ARE BASED ON:

MICROFILMED

FIELD BOOK _____ PAGE # _____

SHOW A PLAN VIEW DRAWING DEPICTING THE CORNER MONUMENT AND SURROUNDING PHYSICAL FEATURES, INCLUDING THE EXCAVATION AREA AND DEPTH. THE CORNER MONUMENT SHALL HAVE THE FOLLOWING CHARACTERISTICS: 1) HAVE AT LEAST TWO PREDETERMINED BREAK-OFF POINTS. 2) IF BROKEN, LEAVE A PERMANENTLY MAGNETIZED REMNANT AT THE ORIGINAL POINT. 3) MUST BE EXTENDABLE. 4) THE CAP IS INSCRIBED: ROCK COUNTY SURVEY MONUMENT - PENALTY FOR DISTURBING MARKER. 5) OR AN EXISTING CUT LIMESTONE. AN IRON PIPE 1 1/2" x 4'0" (MINIMUM) MAY BE USED IN AREAS WHERE GROUND WATER IS WITHIN ONE FOOT OF THE SURFACE. IF THE CORNER IS OCCUPIED BY AN IMPROVEMENT (MANHOLE, BURIED CABLE, ETC.) ANY DURABLE, DISTINCT MONUMENT MAY BE USED. CORNERS SHALL BE REFERENCED WITH AT LEAST 4 DURABLE WITNESS MONUMENTS. WITNESS MONUMENTS SHALL BE MADE OF CONCRETE, NATURAL STONE, IRON OR OTHER EQUALLY DURABLE MATERIAL, EXCEPT WOOD. DESCRIBE THE CORNER AND THE WITNESS MONUMENTS.

CORNER CODE:

Z 4


"MONUMENT RECORD"

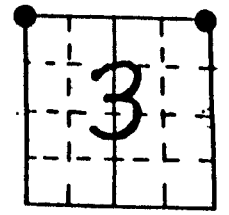
OF

LAND SURVEY MONUMENTS SITUATED IN SECTION 2, TOWNSHIP 46,
RANGE 3, OF THE 3rd PRINCIPAL MERIDIAN, Boone
COUNTY, ILLINOIS.

MONUMENT DESCRIPTION AND REMARKS: Set railroad spike at Northwest corner
and concrete monument at Northeast corner. Concrete reference
markers were set in accordance with Exhibit 1-04-7A and 1-04-7B of the
I.D.O.T. land acquisition policies and procedures.

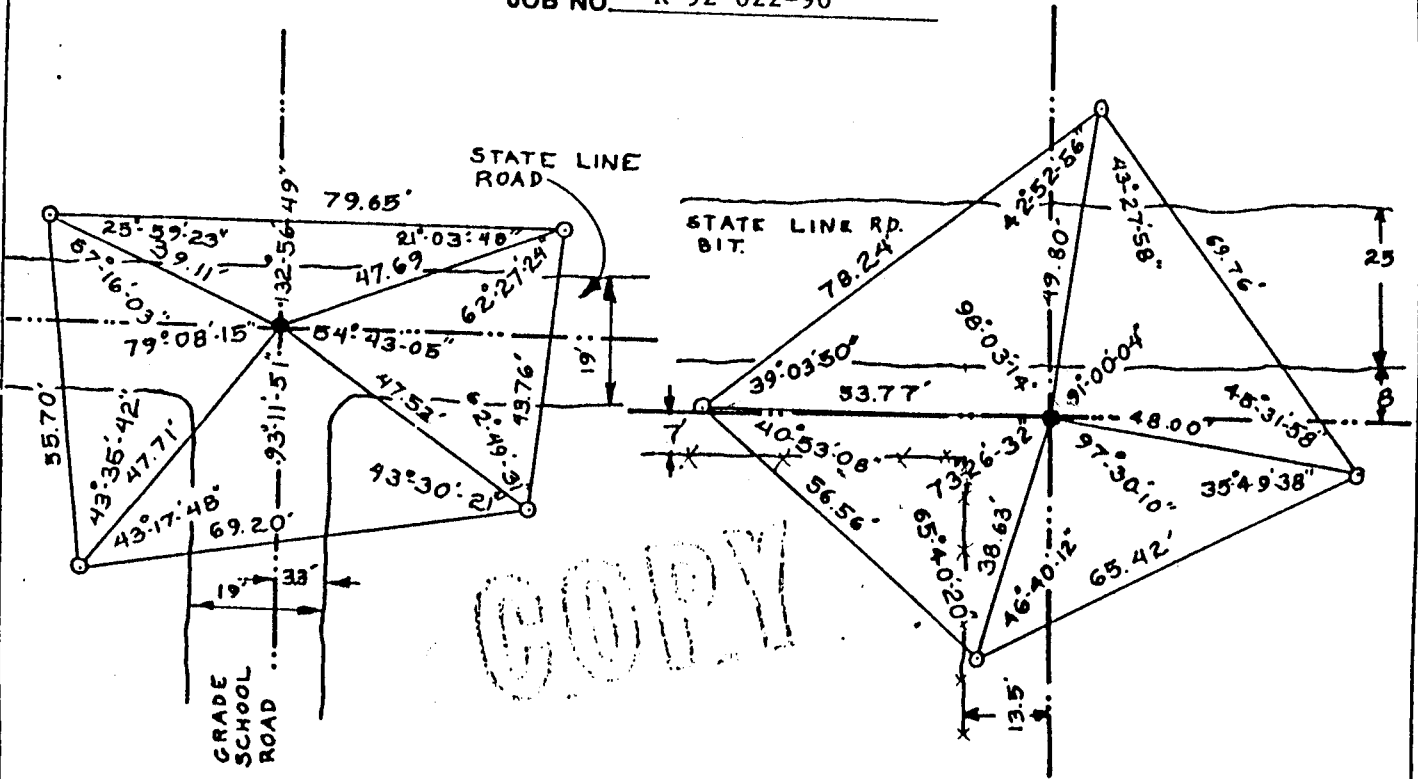
RECOVERY TIE DRAWING

 Illinois Department of Transportation
Division of Highways



NORTH 2
(NOT TO SCALE)

ROUTE F.A. Route 754
SECTION K-RS-2
JOB NO. R-92-022-90



● DENOTES NW. 1/4 CORNER
○ DENOTES REFERENCE MARKER

● DENOTES NE. 1/4 CORNER
○ DENOTES REFERENCE MARKER

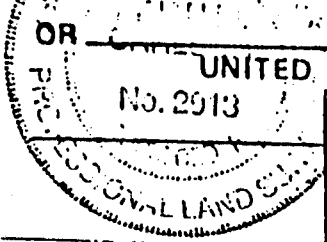
STATE OF ILLINOIS
COUNTY OF WINNEBAGO SS

I, Brian M. Carlson, HEREBY
CERTIFY THAT THIS DOCUMENT WAS PREPARED
UNDER MY DIRECTION IN ACCORDANCE WITH
THE PUBLIC ACT 79-649 AND THE ABOVE
DATA IS GIVEN UNDER MY HAND AND SEAL
THIS 14th DAY OF August, 1990 A.D.

SPACE RESERVED FOR
RECORDING OFFICER
INDEX CODE _____

ILLINOIS REGISTERED LAND SURVEYOR NO. 2913

Document No. 90-329 filed for Recorder's Office of
Boone County, Illinois 8/14/90 at 2:35 clock PM
Angela K. Schneider Recorder of Deeds



OR
UNITED STATES GOVERNMENT AGENCY
ARNOLD LUNDGREN & ASSOCIATES, INC.
PROFESSIONAL ENGINEERS
1824 FOURTH AVENUE
ROCKFORD, ILL. 61102-4710
AREA CODE 815
TELEPHONE 998-0881
BY E.F.D. DATE 8-14-90
APPROVED BY B.M.C. ORDER NO. 19408