

# U.S. PUBLIC LAND SURVEY MONUMENT RECORD

For Public Land Survey Corners in:

WI ADMINISTRATIVE CODE A-E 7.08 REQUIREMENT

T. 1 N., R. 14 E

### CORNER CODE INDEX

CLINTON TWP  
ROCK COUNTY WI

IF AVAILABLE  
ROCK COUNTY COORDINATES PREFERRED

A	1	2	3	4	5	6	7	8	9	10	11	12	13	14	15	16	17	18	19	20	21	22	23	24	25
B	6																								
C		5																							
D			4																						
E				3																					
F					2																				
G	1																								
H		8																							
I			9																						
J				10																					
K					11																				
L	18																								
M		17																							
N			16																						
O				15																					
P					14																				
Q						13																			
R							12																		
S								11																	
T									10																
U										9															
V											8														
W												7													
X													6												
Y														5											
Z															4										

North \_\_\_\_\_ Elev. \_\_\_\_\_

East \_\_\_\_\_

Hor. Datum \_\_\_\_\_ Vert. Datum \_\_\_\_\_

LATITUDE \_\_\_\_\_ ELLIPS. HT. \_\_\_\_\_

LONGITUDE \_\_\_\_\_

GPS (X) \_\_\_\_\_ TRAVERSE (X) \_\_\_\_\_

BASED ON THE FOLLOWING CONTROL:

PLACE MONUMENT SYMBOL  AT PROPER LOCATION ON ABOVE INDEX

CORNER MONUMENT

WITNESS MONUMENT

(a)

BEARINGS ARE BASED ON:

FIELD BOOK \_\_\_\_\_ PAGE # \_\_\_\_\_

SHEET 1 OF 17

SHOW A PLAN VIEW DRAWING DEPICTING THE CORNER MONUMENT AND SURROUNDING PHYSICAL FEATURES, INCLUDING THE EXCAVATION AREA AND DEPTH.

PLANNING & ZONING COMMITTEE ADOPTED THE ABOVE FORM ON 12/2/1982

CORNER CODE 219

CL630S1/4CORSEC35

(B) Describe any record evidence, monument evidence, occupational evidence, testimonial evidence or any other material evidence you considered, and whether the monument was found or placed.

1832 LYON EAST ALONG THE SOUTH SIDE OF SEC 35 T1N R14E  
VAR 7- 36E

2640 SET POST FOR 1/4 SECTION CORNER  
BUR OAK 15 N39W 104.94'; BUR OAK 13 N51E 133.32'

5280 SET A POST NEAR THE WEST SIDE OF A GLADE FOR  
CORNER TO SEC 35 & 36. BUR OAK 19 N75W 95.7'; BUR  
OAK 17 N73E 57.42'. LAND ROLLING & 2<sup>ND</sup> RATE TIMBER,  
IN GENERAL SCATTERING BUR OAK.

1837 SPAUDING PAGE 313 NORTH BETWEEN SECTIONS 5 & 6  
TOWNSHIP 46 NORTH RANGE 4 EAST OF THE 3<sup>RD</sup> PRINCIPAL  
MERIDIAN. VARIATION 8

1716 INTERSECTED THE NORTHERN BOUNDARY LINE OF THE  
STATE OF ILLINOIS 34 CHAINS & 72 LINKS (2291.52')  
WEST OF THE CORNER TO SECTIONS 35 & 36 TOWNSHIP  
1 NORTH OF RANGE 14 EAST OF THE 4<sup>TH</sup> PRINCIPAL  
MERIDIAN. WHERE SET A POST CORNER TO SECTIONS 5  
&  
PAGE 314  
6 TOWNSHIP 46 NORTH RANGE 4 EAST OF THE 3<sup>RD</sup>  
PRINCIPAL MERIDIAN FROM WHICH POST A BURR OAK 15  
INCHES IN DIAMETER BEARS S67W 261 LINKS (172.26')  
AND A BURR OAK 14 INCHES IN DIAMETER BEARS S72E  
325 LINKS (214.5'). LAND GENTLY ROLLING, SOIL  
GOOD AND FIT FOR CULTIVATION. TIMBER, BURR OAK &  
BLACK OAK UNDERGROWTH OAK BUSHES & HASLE.  
JULY 24<sup>TH</sup> 1837.

1839 SPRIGG PAGE 316 SEE NOTES OF OPERATIONS ALONG THE  
NORTH BOUNDARY OF TOWNSHIP 46N R4E OF THE 3<sup>RD</sup>  
P.M. BEGINNING ON PAGE 332 HIND-CHAINMAN.  
WILLIAM SPRIGG-FORE CHAINMAN.  
NOTE 1<sup>ST</sup>.

IN ALL CASES WHERE I HAD REASON TO SUPPOSE THAT  
MY NEEDLE WAS AFFECTED BY LOCAL ATTRACTION, MY  
LINES WERE EXTENDED BY MEANS OF FORE AND BACK  
SIGHTS UNTIL THE NEEDLE APPEARED TO BE FREE OF  
ALL SUCH ATTRACTIONS, THE SEVERAL CHANGES IN THE  
VARIATIONS AS NOTED BY ME WERE SHOWN BY THE  
DIRECTION OF THE NEEDLE WHEN THE COMPASS WAS  
SET ON THE DIRECT LINE AS AFORESAID AND ADJUSTED  
TO THE VARIATION AT WHICH THE LINE WAS COMMENCED  
ON THE SOUTH BOUNDARY OF THE TOWNSHIP IN THE  
SUBDIVISIONS, OR ON THE STANDARD LINE IN RUNNING  
THE EXTERIOR LINES. THE SOUTH & EAST BOUNDARIES  
OF TOWNSHIP 46N R4E

PAGE 317

WHERE EACH RUN AT A VARIATION OF 6-25(5? OR 8)  
EAST, THE NEEDLE BEING FREE OF ATTRACTION, IN THE  
SUBDIVISION OF SAID TOWNSHIP THE N&S LINES WERE  
EACH STARTED FROM THE SOUTH BOUNDARY THEREOF  
WITH THE COMPASS ADJUSTED TO SAID VARIATION (6-  
25) AND CONTINUED AS STRAIGHT LINES TO THE NORTH  
BOUNDARY FORE AND BACK SIGHTS BEING USED AS  
FORESAID OVER ALL SUCH PARTS OF SAID LINES,  
WHERE THERE APPEARED TO BE ANY ATTRACTIONS - ALL  
RANDOM LINES WERE COMMENCED WITH THE COMPASS  
ADJUSTED TO THE VARIATION SHOWN BY THE NEEDLE,  
WHEN SET ON THE SEVERAL N&S LINES, AT THE  
CORNERS FROM WHICH SAID RANDOMS WERE STARTED  
AND EXTENDED BY FORE AND BACK SIGHT, OVER ALL  
SUCH PARTS OF SAID LINES, WHERE THERE APPEARED  
TO ?????

PAGE 318

RUN AT RIGHT ANGLES, TO THE PROPER NORTH AND  
SOUTH LINES. FEBRUARY 5<sup>TH</sup> 1839

*Donald Barnes*  
*May 28, 2001*

NOTE 2<sup>ND</sup>

ALL CORNERS MADE BY SPAULDING ON THE WEST BOUNDARY OF MY DISTRICT AND NOTED THIS VOLUME, WERE READILY FOUND AND IN EXCELLENT ORDER. ALL CORNERS TO WHICH I MEASURED ON THE NORTH BOUNDARY OF THE STATE OF ILLINOIS EITHER AGREED WITH THE DESCRIPTIONS THEREOF FURNISHED ME BY THE SURVEYORS OFFICE OR WERE SUFFICIENTLY NEAR TO ENABLE ME TO FIND THE PLACES OF SAID CORNERS. FEBRUARY 5<sup>TH</sup> 1839 SPRIGG

PAGE 319 NOTE 3<sup>RD</sup>

ALL CORNERS FOR SECTIONS AND QUARTER SECTIONS ON THE EXTERIOR LINES WHERE WITNESS TREES ARE NOTED OUT SIDE THE PROPER SECTIONS, AND QUARTER SECTIONS -THE SAID TREES WERE TAKEN BECAUSE THERE WERE NONE OR NOT THE NUMBER REQUIRED IN THE PROPER SECTIONS OR QUARTER SECTIONS AND AT ALL CORNERS BOTH ON EXTERIOR LINES, AND IN THE SUBDIVISION, WHERE NO WITNESS TREES WERE TAKEN OR NOT THE REQUIRED NUMBER IT WAS BECAUSE THERE WERE NONE OR NO MORE CONVENIENT. FEBRUARY 5<sup>TH</sup> 1839 SPRINGG.

PAGE 320

I CERTIFY THAT THE FOREGOING NOTES ON PAGES 1 TO 93 INCLUSIVE 93 TO 177 INCLUSIVE 186 TO 177 INCLUSIVE 186 TO 272 INCLUSIVE AND 280 TO 371 INCLUSIVE ARE (WITH THE EXCEPTIONS OF SOME CORRECTIONS AND EXPLANATIONS MADE THERETO SINCE BOOK WAS RETURNED TO THE SURVEYOR'S OFFICE) THE ORIGINAL FIELD NOTES OF THE SURVEY OF THE SOUTH AND EAST BOUNDARIES OF TOWNSHIP 42-43-44-45 & 46 NORTH RANGES 4 & 5 EAST - AND THE SUBDIVISION LINES OF TOWNSHIPS 46 & 46 NORTH OF THE BASE LINE RANGES 4&5 EAST OF THE 3<sup>RD</sup> PRINCIPAL MERIDIAN AS EXECUTED BY ME IN THE MONTHS OF JUNE - JULY - SEPTEMBER & OCTOBER 1837-UNDER MY CONTRACT WITH AND INSTRUCTIONS, FORM DANIEL DUNKLING SURVEYOR OF THE LANDS OF THE UNITED STATES.

PAGE 321

IN THE STATE OF ILLINOIS AND MISSOURI THE CONTRACT SIGNED BY THE SAID DUNKLING ON THE 21<sup>ST</sup> DAY OF NOVEMBER 1836 AND BY ME ON THE 1<sup>ST</sup> DAY OF DECEMBER OF THE SAME YEAR- AND I DO FURTHER CERTIFY, THAT THE MARKS, DISCRIPTIONS, COURSES AND DISTANCES SPECIFIED IN SAID NOTES ARE CORRECT AND ALSO THAT SAID NOTES, WERE ALL SET DOWN AT THE TIME, WHEN AND IN THE ORDER IN WHICH THE WORK WAS PERFORMED ON THE GROUND. THAT ALL THE WITNESS TREES TO TOWNSHIP AND SECTION CORNERS WERE MARKED WITH A BLAZE AND NOTCH FACING THE SEVERAL CORNER POSTS. THAT THE NOTCH ON EACH TREE WAS AT THE LOWER END OF THE BLAZE THAT THE BLAZE WAS NEATLY MADE AND THAT

PAGE 322

THERE WAS MARKED, IN A PLAIN DISTINCT AND PERMANENT MANNER, WITH A MARKING IRON ON THE BLAZE OF EACH WITNESS TREE, AND ABOVE THE NOTCH THE LETTER "S" WITH THE NUMBER OF THE SECTION AND OVER IT THE LETTER "T" WITH THE NUMBER OF TOWNSHIP, AND OVER THIS THE LETTER R, WITH THE NUMBER OF RANGE IN WHICH THE SAID TREES- RESPECTIVELY STAND, THAT ALL THE SECTION AND TOWNSHIP CORNER POSTS WERE INSERTED TWO FEET (OR THERE ABOUTS) INTO A HOLE, DUG IN THE GROUND, AND THAT THEY WERE SECURELY RAMMED IN WITH

*Donald Barnes*  
*May 28 2001*

EARTH, THAT THE SAID POSTS WERE OF THE MOST DURABLE WOOD, THAT COULD BE HAD IN THE VICINITY THAT THE TOWNSHIP CORNER POSTS, WERE AT LEAST 5 AND THE SECTION CORNER POSTS AT LEAST 4 INCHES IN DIAMETER (THAT THEY WERE NEATLY SQUARED AT TOP AND PLACED

PAGE 323

WITH THE CORNERS TO THE CARDINAL POINTS AND THAT THE SEVERAL RIDGES WERE MARKED WITH THE NUMBER OF THE SECTION THEY FACED, ALSO THAT THE CORNERS OF TOWNSHIP CORNER POSTS WERE MARKED WITH 6 NOTCHES EACH. THAT TWO OF THE CORNERS OF SECTION CORNER POSTS ON TOWNSHIP BOUNDARY LINES, WERE MARKED WITH AS MANY NOTCHES FACING THE PROPER CARDINAL POINTS AS SAID POSTS ARE MILES FROM THE NEAREST TOWNSHIP CORNERS AND THAT THE CORNERS OF SECTION POSTS IN THE INTERIOR OF THE TOWNSHIPS WERE MARKED, WITH AS MANY NOTCHES AS THE POST, STAND MILES, FROM THE TOWNSHIP BOUNDARIES THAT THE WITNESS TREES TO QUARTER SECTION CORNERS WERE MARKED WITH A BLAZE AND NOTCH FACING THE POST.

PAGE 324

AND THAT 1-4 S WAS MARKED ON THE BLAZE ABOVE THE NOTCH AND ALSO THAT 1-4S WAS MARKED ON EACH CORNER POST, AND THAT THE POSTS WERE AT LEAST 3 INCHES DIAMETER AND PLACED FIRMLY IN THE GROUND. THAT THE MOUNDS WERE ?? OR FACED WITH SOIL LAID HORIZONTALLY AND IN SUCCESSIVE LAYERS ON EACH OTHER, EACH LAYER HAVING AN OFFSET INWARDS CORRESPONDING TO THE GENERAL SLOPE OF THE FACE OF THE MOUND: AND THAT THE MOUNDS AT TOWNSHIP CORNERS WERE FIVE FEET AT THE BASE. 2 FEET SQUARE AT TOP AND 3 FEET HIGH THAT THE MOUNDS AT SECTION CORNERS WERE 4 FEET SQUARE AT THE BASE 2 FEET SQUARE AT THE TOP AND 2 FEET 6 INCHES HIGH AND THAT THE MOUNDS AT QUARTER

PAGE 325

SECTION CORNERS WERE 3 FEET 6 INCHES SQUARE AT THE BASE 1 FOOT 6 INCHES SQUARE AT THE TOP AND TWO FEET HIGH.

FEBRUARY 5<sup>TH</sup> 1839 SPRIGG.

PAGE 326 SURVEYOR'S OFFICE ST. LOUIS FEB 5<sup>TH</sup> 1839 THE FOREGOING FIELD NOTES ON PAGES 1 TO 93 INCLUSIVE 93 TO 177 INCLUSIVE 186 TO 223 INCLUSIVE AND 280 TO 371 INCLUSIVE OF THE SURVEY, THEREIN DESIGNATED BY ?? SPRIGG, HAVE BEEN CAREFULLY EXAMINED BY ME. THE ? CORRECTIONS, REFERENCES AND EXPLANATION HAVING BEEN MADE THERETO, THEY ARE NOW, IN MY OPINION SUFFICIENTLY PLAIN. FROM THE SAID NOTES IT APPEARS THAT THE WORK, GENERALLY, HAS BEEN WELL EXECUTED ON THE GROUND, AND IN ALL THE ?TRIALS, IN CONFORMITY WITH THE CONTRACT AND INSTRUCTIONS. EXCEPT AS FOLLOWS. OF THE EXTERIOR BOUNDARIES.

PAGE 327

TOWNSHIP 46 NORTH RANGE 4 EAST DOES NOT CLOSE WITHIN THE PRESCRIBED LIMITS, THE LENGTH OF ITS NORTH BOUNDARY WHEN CALCULATED BY THE SEVERAL INTERSECTIONS THEREWITH IS 5 MILES 57.25 CHAINS, WHICH IS 15.76 CHS LESS THAN ITS SOUTH BOUNDARY. THE WHOLE DISTANCE ALONG THE SOUTH BOUNDARY OF SECTIONS 1,2,3,4,5 & 6 IS 5 MILES 67.12 CHAINS, WHICH IS 5.92 CHAINS LESS THEN THE SAID SOUTH BOUNDARY OF THE TOWNSHIP. THERE IS EVIDENTLY A GREAT ERROR IN THE OLD LINE ALONG THE N. BDY. OF

PAGE 3 OF 17

Donald Barnes  
May 28, 2001

Z-19

THIS TOWNSHIP {OF THE SUBDIVISION LINES OF T46N R5 EAST}. AT THE QUARTER SECTION CORNERS ON THE LINE BETWEEN SECTION 23 & 26 THERE HAS BEEN BUT ONE WITNESS TREE TAKEN, THE COURSE TO WHICH IS NOT GIVEN IN THE NOTES.

PAGE 328

AT THE INTERSECTION OF THE LINE BETWEEN SECTIONS 19 & 30 WITH THE W. BDY OF THE TOWNSHIP THE FALLING IS NOTED AS BEING SOUTH THE DISTANCE NOT GIVEN. THE SAID SECTIONS 19 & 30 CANNOT THEREFORE BE CALCULATED AS TO THEIR CLOSING. OF THE SUBD. LINES OF T46N R4E THE CORNER OF SECTIONS 10, 11, 14, & 15 DOES NOT APPEAR TO HAVE BEEN ESTABLISHED EXCEPT BY SETTING A POST. SECTIONS 2, 3, & 6 ARE OUT OF THE LIMITS BOTH WAYS, AND SECTIONS 5 & 30 ARE OUT AS TO THEIR N & S BOUNDARIES. THESE SECTIONS ARE HOWEVER ALL BOUNDED ON THE NORTH, OR WEST, BY LINES RUN BY OTHER SURVEYORS, NONE OF THEM (THE SECTIONS) MUCH OUT OF THE WAY EXCEPT SECTIONS 2 & 6 THE S. BDY OF THE LATTER BEING AS MUCH AS 8.81 CHAINS LONGER THAN

PAGE 329

ITS NORTH BDY. SPRIGG SHOULD HAVE MEASURED THE OLD LINE ALONG THE N. BDY OF SAID SECTIONS 2 & 6. FROM ALL INTERSECTIONS OF BOTH EXTERIOR, AND SUBDIVISION LINES WITH THE N. BDY OF THE STATE OF ILLINOIS MADE BY MR. S. HE HAS MEASURED TO THE NEAREST SECTION CORNERS, ALTHOUGH EACH INTERSECTION, WAS NEAR A QUARTER SECTION CORNER. AT A FEW OF THE CORNERS CHARRED CHUNKS HAVE BEEN DEPOSITED, INSTEAD OF CHARCOAL. THE SEVERAL BOOKS IN THIS VOLUME HAVE BEEN SIGNED BY BUT ONE OF THE HANDS EMPLOYED. THE PRAIRIE AND SWAMPS IN MANY PLACES CANNOT FROM THE NOTES BE CONNECTED ON THE TOWNSHIP PLATS. FROM THE GENERAL DESCRIPTION OF THE COUNTRY, I HAVE NO DOUBT, BUT THAT IT WAS SOMETIMES MARKABLE. PAGE 330 THERE IS NO CONFUSING OF DATES, EXCEPT IN ONE INSTANCE (SEE PAGE 53) WHICH IS EXPLAINED BY A NOTE. JENNIFER F. SPRIGG CLERK

1839 DAN DUNKLING SURVEYOR'S OFFICE ST. LOUIS 6<sup>TH</sup>  
FEBRUARY 1839

IN VIRTUE OF THE FOREGOING CERTIFICATE OF EXAMINATION BY T.S. SPRIGG A CLERK IN THIS OFFICE. HEREBY APPROVE OF THE NOTES IN THIS BOOK AND THE SURVEYS THEY DESCRIBE, EXCEPT AS HEREAFTER STATED. IT BEING VERY EVIDENT THAT THE ERRORS WHICH THROW THE SURVEYS IN T46N R4E SO FAR OUT OF THE LIMITS AS TO REQUIRE CORRECTIONS, ARE IN THE OPERATION THE SURVEYOR, WHO RAN THE NORTH BOUNDARY. NO PART OF MR SPRIGG'S SURVEY IS SUSPENDED.

PAGE 331

ON THAT ACCOUNT, BUT HE WILL BE REQUIRED TO VERIFY HIS WORK BY SHOWING BY ACTUAL MEASUREMENT THE TRUE LENGTH OF THE SEVERAL SECTION BOUNDARIES ON SAID NORTHERN BOUNDARY AND THE POSITIONS OF THE SEVERAL CORNERS THEREON.

WITH REGARD TO THE MARKINGS ON THE PART OF M. SPRIGG AT THE QUARTER SECTION CORNER ON THE LINES BETWEEN SECTIONS 23 & 26 T46N R5E AND AT THE INTERSECTIONS OF THE LINE BETWEEN SECTIONS 19 & 30 WITH THE WEST BOUNDARY OF THE SAME TOWNSHIP ALSO AT THE CORNER TO SECTIONS 10, 11, 14, & 15 T46N R4E HE WILL BE REQUIRED TO PERFECT THE

*Donald Barnes  
May 28, 2001*

PAGE 4 OF 17

Z 19

SURVEY AND FIELD NOTES BY ACTUAL OPERATIONS ON  
THE GROUNDS. DAN DUNKLING SUR. GEN  
PAGE 332

THE FOLLOWING ARE THE TRUE AND CORRECT NOTES OF  
MY OPERATIONS ALONG THE NORTH BOUNDARY OF  
TOWNSHIP 46N RANGE 4 EAST OF THE 3<sup>RD</sup> PRINCIPAL  
MERIDIAN OF THE LINE BETWEEN SECTIONS 6 & 7 AND  
THE DESCRIPTION OF THE CORNER TO SECTIONS  
10, 11, 14, & 15 ALL IN SAID TOWNSHIP BEGINNING AT THE  
N.E. CORNER OF SECTION 1 TOWNSHIP 46 NORTH  
RANGE 4 EAST OF THE 3<sup>RD</sup> PRINCIPAL MERIDIAN.  
THENCE---

1839 SPRIGG WEST ON A BLANK LINE.

71.28' TO THE QUARTER POST ON THE SOUTH BOUNDARY OF  
SECTION 34 T1N RANGE 15 EAST OF THE 4<sup>TH</sup> PRINCIPAL  
MERIDIAN WHICH CORNER AGREES WITH THE  
DESCRIPTION FURNISHED ME FROM THE SURVEYOR  
GENERAL'S OFFICE

2724.48' TO A POINT 37.62' NORTH OF THE CORNER TO  
SECTIONS 33 & 34 T1N R15 EAST OF

PAGE 333

THE 4<sup>TH</sup> PRINCIPAL MERIDIAN WHICH AGREES WITH THE  
DESCRIPTION THEREOF FURNISHED ME.

5217.3' TO A POINT 95.04' NORTH OF THE CORNER TO SECTIONS  
1 & 2 T46N R4E OF THE 3<sup>RD</sup> PRINCIPAL MERIDIAN. I  
THEN RUN FROM SAID CORNER TO SECTIONS 1 & 2 T46N  
R4EAST

WEST ON A BLANK LINE

173.58' TO A POINT 0.66' SOUTH OF THE QUARTER SECTION  
CORNER POST ON THE SOUTH BOUNDARY OF SECTION  
33 T1N R15E OF THE 4<sup>TH</sup> PRINCIPAL MERIDIAN WHICH  
CORNER AGREES WITH THE DESCRIPTION THEREOF  
FURNISHED ME.

2845.92' TO A POINT 52.8' NORTH OF CORNER TO SECTIONS 32  
& 33 T1N R15E 4<sup>TH</sup> PRINCIPAL MERIDIAN

5214' TO A POINT 89.1' NORTH OF THE CORNER TO SECTIONS  
2 & 3 T46N R4E OF THE 3<sup>RD</sup> PRINCIPAL MERIDIAN. I  
THEN RUN FROM SAID CORNER TO

PAGE 334

SECTIONS 2 & 3 T46N R4E OF THE 3<sup>RD</sup> PRINCIPAL  
MERIDIAN

WEST ON A BLANK LINE

279.84' TO A POINT 5.94' NORTH OF THE QUARTER SECTION  
CORNER POST ON THE SOUTH BOUNDARY OF SECTION  
32 T1NR15E EAST OF THE 4<sup>TH</sup> PRINCIPAL MERIDIAN.

2937.00' TO A POINT 37.62' NORTH OF THE CORNER TO  
SECTIONS 31 & 32 T1N R15E OF THE 4<sup>TH</sup> PRINCIPAL  
MERIDIAN WHICH CORNER AGREES WITH THE  
DESCRIPTION THEREOF FURNISHED ME. EXCEPT THE  
DISTANCE TO BEARING TREE. N.E. OF THE CORNER  
WHICH IS 112.2' (170 LINKS) INSTEAD OF 46.86' (71  
LINKS)

5214' TO A POINT 59.4' NORTH OF THE CORNER TO SECTIONS  
3 & 4 T46N R4E OF THE 3<sup>RD</sup> P.M. THEN RUN FROM SAID  
CORNER TO SEC 3 & 4 T46NR4E

WEST ON A BLANK LINE

PAGE 335

389.4' TO A POINT 5.28' NORTH OF THE QUARTER SECTION  
CORNER POST ON THE SOUTH BOUNDARY OF SECTION  
31 T1N R15E EAST OF THE 4<sup>TH</sup> P.M.

3049.86 TO A POINT 52.8' NORTH OF THE CORNER TO SECTION  
SA 31 & 36 TOWNSHIPS 1 & 1 NORTH RANGES 14 & 15  
EAST OF THE 4<sup>TH</sup> PRINCIPAL MERIDIAN WHICH CORNER  
AGREES WITH THE DESCRIPTION THEREOF FURNISHED  
ME.

5268.12 TO A POINT 59.4' NORTH OF THE CORNER TO SECTIONS  
4 & 5 T46N R4E EAST OF THE 3<sup>RD</sup> P.M. I THEN RUN FROM

PAGE 5 OF 17

*Dwight Barnes*

*May 28, 2001*

*219*

SAID CORNER TO SECTION 4 & 5 T46N R4EAST.  
WEST ON A BLANK LINE

PAGE 336

437.58' TO A POINT 7.92' NORTH OF THE QUARTER SECTION  
CORNER POST ON THE SOUTH BOUNDARY OF SECTION  
36 T1N R14 EAST OF THE 4<sup>TH</sup> PRINCIPAL MERIDIAN {WHICH  
CORNER AGREES WITH THE DESCRIPTION THEREOF  
FURNISHED ME}

3102' TO A POINT 26.4' NORTH OF THE CORNER TO SECTIONS  
35 & 36 T1N R14E OF THE 3<sup>RD</sup> PRINCIPAL MERIDIAN  
WHICH CORNER AGREES WITH THE DESCRIPTION  
THEREOF FURNISHED ME.

5227.86' TO A POINT 41.58' NORTH OF THE CORNER TO  
SECTIONS 5 & 6 T46N R4E EAST OF THE 3<sup>RD</sup> PRINCIPAL  
MERIDIAN. I THEN RUN FROM SAID CORNER TO  
SECTIONS 5 & 6 T46N R4E EAST  
WEST ON A BLANK LINE

531.3' TO A POINT 15.84' NORTH OF THE QUARTER SECTION  
CORNER POST ON THE SOUTH

PAGE 337

BOUNDARY OF SECTION 35 T1N R14 EAST OF THE 4<sup>TH</sup>  
PRINCIPAL MERIDIAN

3188.46' TO A POINT 43.56' NORTH OF THE CORNER TO  
SECTIONS 34 & 35 T1N R14E OF THE 4<sup>TH</sup> PRINCIPAL  
MERIDIAN WHICH CORNER AGREES WITH THE  
DESCRIPTION THEREOF FURNISHED ME.

4262.28' TO A POINT 48.84' NORTH OF THE CORNER TO  
SECTIONS 1 & 6 TOWNSHIP 46 & 46 NORTH RANGES 3 &  
4 EAST OF THE 3<sup>RD</sup> PRINCIPAL MERIDIAN VARIATION 6-25  
EAST. I THEN RUN THE LINE BETWEEN SECTIONS 6 & 7  
46N R4E

EAST ON A BLANK LINE

1688.94' TO THE QUARTER SECTION CORNER POST

4328.94' TO THE CORNER OF SECTIONS 5,6,7 & 8 T46N R4 EAST  
MAY 15<sup>TH</sup> 1839

1839 SPAULDING ORIG GOVERNMENT SURVEYOR FOR ILL. PG 225 NW  
COR SEC 5 T46N R4E IS 531.3' EAST OF S ¼ COR SEC 35 & PG  
313 NW COR SEC 5 IS 2291.52 TO SE COR SEC 35. PG 337 S ¼  
COR SEC 35 IS 2657.16 EAST OF SW COR SEC 35 & 2657.16  
WEST OF SE COR SEC 35.

1839 ILLINOIS ORIG. GOV. PLAT. SURVEYOR GENERAL'S OFFICE SAINT  
LOUIS 22 JULY 1839. THE ABOVE PLAT OF TOWNSHIP 46 NORTH  
OF THE BASE LINE RANGE 4 EAST OF THE 3<sup>RD</sup> PRINCIPAL  
MERIDIAN ACCEPT SECTIONS 6, 7, & 18 IS STRICTLY  
CONFORMABLE TO THE FIELD NOTES OF THE SURVEY THEREOF ON  
FILE IN THIS OFFICE, WHICH HAVE BEEN EXAMINED AND  
APPROVED. THE NORTH BOUNDARY WAS SURVEYED IN 1832 &  
1833 BY LUCIUS LYON, COMMISSIONER ON THE PART OF THE  
UNITED STATES, AS CERTIFIED TO THIS OFFICE BY M.T. WILLIAMS,  
SURVEYOR GENERAL OF OHIO, INDIANA AND MICHIGAN. THE  
SAID LINE BEING A PART OF THE BOUNDARY BETWEEN ILLINOIS  
AND MICHIGAN, NOW WISCONSIN. - THE WEST BOUNDARY 5 MILES  
24.68 CHAINS WAS SURVEYED IN THE 4<sup>TH</sup> QUARTER OF 1836 BY  
DON ANTONIO SPAULDING, UNDER CONTRACT OF THE 9<sup>TH</sup> JUNE  
1835, AND WITH THE LIMITATION NOTED IN THE MARGIN, IT WAS  
PAID FOR IN THE 3<sup>RD</sup> QUARTER OF 1837 AND 2<sup>ND</sup> QUARTER OF  
1839- AND CHARGED IN THE ACCOUNTS OF THE SURVEYOR  
GENERAL FOR THOSE QUARTER VOUCHER NO. 6 & 7. - THE SOUTH  
BOUNDARY 5 MILES 73.04 CHAINS WAS SURVEYED IN THE 2<sup>ND</sup>  
QUARTER OF 1837- THE EAST BOUNDARY 5 MILES 32.62 CHAINS  
AND THE SUBDIVISION LINES 56 MILES 4.52 CHAINS WERE  
SURVEYED IN THE 3<sup>RD</sup> QUARTER OF 1837, ALL BY IGNATIUS T.  
SPRIGG, UNDER CONTRACT SIGNED BY THE SURVEYOR GENERAL  
ON THE 21<sup>ST</sup> OF NOVEMBER 1836 AND BY SPRIGG ON THE 15<sup>TH</sup>  
DAY OF DECEMBER OF THE SAME YEAR. THE SURVEYS BY SPRIGG  
WERE PAID FOR ON THE 1<sup>ST</sup> AND 2<sup>ND</sup> QUARTERS OF 1839 AND

PAGE 6 OF 17

*Dodd Barnes*  
*May 28, 2001*

*Z-19*

CHARGED ON THE ACCOUNTS OF THE SURVEYOR GENERAL FOR THOSE QUARTERS, VOUCHER NO. 2 & 9. WILLIAM MILBURN SURVEYOR GENERAL.

EXPLANATION NOTE BY THE DEPUTY SURVEYOR RELATIVE TO THE VARIATION OF THE NEEDLE IN SURVEYING THIS TOWNSHIP.----"IN ALL CASES WHERE I HAD REASON TO SUPPOSE THAT MY NEEDLE WAS AFFECTED BY LOCAL ATTRACTION MY LINES BE ESTABLISHED BY MEANS OF FORE AND BACKSIGHTS UNTIL THE NEEDLE APPEARED TO BE FREE OF ALL SUCH ATTRACTIONS; THE SEVERAL CHANGES TO BE FREE OF ALL SUCH ATTRACTIONS; THE SEVERAL CHANGES IN THE VARIATION AS NOTED BY ME WERE SHOWN BY THE DIRECTION OF THE NEEDLE WHEN THE COMPASS WAS SET ON THE DIRECT?LINE AS AFORESAID AND ADJUSTED TO THE VARIATION AT WHICH THE LINE WAS COMMENCED ON THE SOUTH BOUNDARY OF THE TOWNSHIP WEST ON THE SOUTH BOUNDARY OF THE TOWNSHIP IN THE SUBDIVISION; OR ON THE ?? LINE IN RUNNING THE EXTERIOR LINES. - THE SOUTH & EAST BOUNDARIES OF TOWNSHIP 46 NORTH RANGE 4 EAST WERE EACH RUN AT A VARIATION OF 6-25 EAST THE NEEDLE BEING FREE OF ATTRACTIONS, IN THE SUBDIVISION AND TO BEING FREE OF ATTRACTIONS IN THE SUBDIVISION OF SAID TOWNSHIP. THE NORTH AND SOUTH LINES WERE EACH STARTED FROM THE SOUTH BOUNDARY THEREOF, WITH THE COMPASS ADJUSTED TO SAID VARIATION (6-26) AND CONTINUED AS STRAIGHT LINES TO THE NORTH BOUNDARY; FORE AND BACK SIGHTS BEING RUN? AS AFORESAID ATTRACTION—ALL RANDOM LINES WERE COMMENCED WITH THE COMPASS ADJUSTED TO THE VARIATION SHOWN BY THE NEEDLE WHEN SET ON THE SEVERAL NORTH AND SOUTH LINES AT THE CORNERS FROM WHICH NORTH AND SOUTH LINES AT THE CORNERS FROM WHICH SAID RANDOMS WERE STARTED AND EXTENDED BY FORE AND BACK SIGHTS OVER ALL SUCH PARTS OF SAID LINES WHERE THERE APPEARED TO BE ANY ATTRACTION, THAT IS THEY WERE RUN AT RIGHT ANGLES TO THE PROPER NORTH AND SOUTH LINES. --- FEBRUARY 5<sup>TH</sup> 1839—T. SPRIGG.

WILLIAM MILBURN SURVEYOR GENERAL  
ON THE ATTACHED MAP THIS PLAT SHOWS THE FOLLOWING  
ALONG THE STATE LINE.

1841 PAGE 341 I, ADOLPH RENARD, A SWORN CLERK IN THE OFFICE OF THE SURVEYOR OF THE PUBLIC LANDS IN THE STATE OF ILLINOIS AND MISSOURI, DO CERTIFY THAT I HAVE COMPARED THE NOTES IN THIS VOLUME, WITH THE FIELD NOTES ON FILE IN SAID OFFICE, AND THAT THEY ARE CORRECTLY COPIED FROM THE SAID FIELD NOTES.

SAINT LOUIS 30<sup>TH</sup> APRIL 1841. SURVEYOR OFFICE SAINT LOUIS 30<sup>TH</sup> APRIL 1841.

IN VIRTUE OF THE ABOVE CERTIFICATE OF ADOLPH RENARD A SWORN CLERK IN THIS OFFICE, I DO APPROVE OF THE COPIES OF FIELD NOTES CONTAINED IN THIS VOLUME. ?? MILBURN SURVEYOR OF THE PUBLIC LANDS IN THE STATES OF ILLINOIS & MISSOURI.}

1846 TURTLE TOWNSHIP ROAD RECORDS PAGE 4 WE HEREBY CERTIFY THAT WE MET THIS 5<sup>TH</sup> DAY OF MAY 1846 AT THE HOUSE OF THOMAS CROSBY IN THE TOWN OF TURTLE, COUNTY OF ROCK AND TERRITORY OF WISCONSIN AT NINE O'CLOCK IN THE FORENOON FOR THE PURPOSE OF TAKING INTO CONSIDERATION THE SUBJECT EMBRACED IN THE PETITION OF MR. JACK AND FIVE OTHERS FOR THE ALTERATION OF A HIGHWAY. AND UPON BEING SATISFIED THAT THE NOTICES OF THE TIME, PLACE AND PURPOSE OF THIS MEETING HAD BEEN GIVEN AS THE LAW REQUIRES, WE PROCEEDED TO EXAMINE THE GROUND ON THE LINE PETITIONED FOR AND CAUSED A SURVEY OF THE LINE TO BE MADE WHICH RUNS AS FOLLOWS:

BEGINNING AT A POINT IN THE LINE BETWEEN RANGES 12 & 13, 2 RODS (33 FT) NORTH OF THE SOUTH LINE OF THIS TERRITORY; THENCE RUNNING THE LINE BETWEEN SECTIONS 31 AND 32 79.74 CHAINS TO THE LINE BETWEEN SECTION 31 & 32; THENCE NORTH 79 1/2 EAST 80.75 CHAINS TO THE LINE BETWEEN

PAGE 7 OF 17

Donald Barnes  
May 28, 2001

219



SECTIONS 32 & 33, 14.94 CHAINS NORTH OF THE SAID TERRITORY LINE; THENCE N78 ¾ E 49.75 CHAINS TO ANGLE; THENCE N 58 ½ E 36.90 CHAINS TO THE LINE BETWEEN SECTIONS 33 AND 34, 4.54 CHAINS NORTH OF THE QUARTER SECTION POST; THENCE N 71 ½ E 30 CHAINS TO THE COUNTY RD AS ALTERED BY THE TOWN OF CLINTON. (MAGNETIC VARIATIONS 6 ½). AND WE ORDER THAT SO MUCH OF THE RD LAID OUT AND SURVEYED ON THE 3<sup>RD</sup> DAY OF JANUARY 1840 OF WHICH NO ACCURATE DESCRIPTION WAS MADE AS LIES BETWEEN OR CONNECT THE EXTREMITIES OF THE ABOVE DESCRIBED LINE BE ALTERED SO AS TO RUN ON THE ABOVE DESCRIBED LINE AND THE ABOVE DESCRIBED LINE BE THE CENTER LINE OF A HIGHWAY FOUR RODS IN WIDTH.

1844 TERRITORIAL ROAD RECORDS. PG 66

MINUTES OF A SURVEY OF THAT PART OF A ROAD TERRITORIAL LEADING FROM SOUTH POST TO BELOIT WHICH LIES IN THE COUNTY OF ROCK MADE BY E. G. WHEELER SURVEYOR UNDER THE DIRECTION OF JOHN W. MCKAY, E.D. ROBBINS AND JOSOPH D. WHITE BY COMMISSION APPOINTED BY THE LEGISLATURE OF THE TERRITORY OF WISCONSIN FOR THAT PURPOSE AS FOLLOWS: BEGINNING AT A STAKE IN THE EASTERN BOUNDARY LINE OF THE SAID COUNTY OF ROCK, FIFTY LINKS (33') NORTH FROM THE SOUTH EAST CORNER POST OF THE SAID COUNTY OF ROCK CORNER OF T NO. 1 NORTH RANGE 14 EAST 45 CHAINS (2970') AND 43? LINKS (29.7') WEST FROM MILE POST NO. 49

NO. OF STATION	COURSES	VARIATION	LAND MARKS	DISTANCES	?	?	WITNESS & OBSERVATIONS
THENCE 1	WEST	7-10	TO MILE POST NO 50	34.60	34.60		
" 2	"	"	TO EAST LINE OF 35	45.44			
" 3	"	"	TO MILE POST NO 51	34.56	80	80.00	
" 4	"	"	TO MILE POST NO 52	80	"	"	
" 5	"	"	TO ¼ LINE OF SEC 34	5.23			
" 6	"	{SE 33}	TO SEC 33	40.57	45.80		
" 7	"	6-45	TO MILE POST NO 53	34.20	80	80.00	
" 8	"	"	***** 54	80.00		80.00	
" 9	"	"	***** 55	80.		80.00	
" 10	"	"	" ¼ LINE SEC 31	6.18			
" 11	"	"	WEST T1N R14E	40.13	46.31		
" 12	"	"	MILE POST NO. 56	33.69	80.00	80.00	
" 13	"	"	***** 57	80.00		80.00	
" 14	"	"	***** 58	80.00		80.00	NEAR A SAWMILL
" 15	"	"	***** 59	80.00		80.00	IN A SLOUGH
" 16	"	{S ¼ 33}	SEC 32 T1NR13E	6.94			
" 17	"	6-30	MILE POST NO. 60	73.06	80.00	80.00	ON A PRAIRIE
" 18	"	"	MILE POST NO. 61	80		80.00	*****
" 19	"	{SE 36}	6-15 SEC 36 T1NR12E	47	47		COR. POST SEC 36
" 20	N77W	6-15	MILE POST NO. 62	33	80	80.00	T1R 12E ON WEST BANK OF TURTLE CREEK
" 21	N76-15E	"	A STAKE	6.67			
" 22	N59-11W	"	A POST	17.77	24.44	24.44	TO A POST CENTER OF BROAD ST. BELOIT

WHOLE DISTANCE IN LENGTH OF ROCK FROM EAST LINE THEREOF TO TERMINUS IN THE CENTER OF BROAD STREET BELOIT VILLAGE 12 MILES 59 CHAINS & ?? LINKS  
PG 67

NOTE: AS WILL BE HEREBY THE MINUTES THE CENTER LINE OF THE ROAD STRIKES THE EAST LINE OF ROCK COUNTY 50 LINKS (33') NORTH OF THE STATE LINE AND

*Donald Barnes*  
*May 28, 2001*

*219*

CONTINUES WEST PARALLEL TO THE STATE LINE UNTIL IT STRIKES THE EAST LINE OF SEC 36 T1R12. IT THEN ANGLES TO THE NORTH WEST MAKING 3 SMALL ANGLES TO THE TERMINUS. STAKES ARE SET IN THE CENTER LINE. THEY ARE MARKED AND NUMBERED AND ARE WITNESSED WHEREVER TREES COULD BE FOUND CONVENIENT. E.G. WHEELER SURVEYOR.

I HEREBY CERTIFY THE FOREGOING SURVEY IS CORRECT TRANSCRIPT FROM MY FIELD NOTES TAKEN UPON GROUND AND THAT THE SURVEY WAS MADE UNDER THE DIRECTION OF THE COMMISSIONS AFORESAID AND THAT SAID ROAD WAS ORDERED TO BE LAID ACCORDING TO THE METES AND BOUNDS HEREIN SET FORTH. E.G. WHEELER.

I CERTIFY THAT THE CHAINMAN, AXMAN AND FLAGMAN WERE DULY SWORN BEFORE ME TO DISCHARGE THEIR RESPECTIVE DUTIES FAITHFULLY AND IMPARTIALLY. IN WITNESS WHEREOF I HAVE SET MY HAND AND AFFIXED ON 5<sup>TH</sup> OF MY OFFICE THIS 20<sup>TH</sup> DAY OF SEPT. A.D. 1848. E. G. WHEELER

RECORDED THE 1<sup>ST</sup> FEBY 1849 AND FILED IN THE OFFICE OF THE CLERK OF THE 3<sup>RD</sup> DAY OF JANUARY 1849. WELCH CLERK.

1858 TURTLE TOWNSHIP ROAD RECORDS PAGE 36. AT A MEETING OF THE SUPERVISORS OF SAID TOWN OF TURTLE ON THE THIRD DAY OF APRIL, 1858 TOWN OF THE SUPERVISORS HAVING MET AGREEABLE TO NOTICE AND EXAMINED AND DELIBERATED ON THE SUBJECT MATTER OF THIS ORDER IT IS HEREBY ORDERED AND DETERMINED BY THEM THAT A HIGHWAY BE LAID OUT IN SAID TOWNS OF THE WIDTH OF FOUR RODS COMMENCING AT THE CENTER OF THE SOUTH HALF SECTION 34 AND RUNNING DIRECTLY SOUTH ON SAID SECTION LINE TO THE SOUTH LINE OF THE STATE OF WISCONSIN. THE OLD ANGLING ROAD INSTEAD IS HEREBY VACATED.

1873 PLAT BOOK SHOWS STATELINE ROAD GOING WEST FROM SE CORNER OF CLINTON TOWNSHIP AND TURNING NORTH NEAR S  $\frac{1}{4}$  COR SEC 34 TURTLE TWP.

1881 LEE VOL 2 PG 326 STUMPS OF BEARING TREES DUG UP & CORNER LOST. ESTABLISHED IT FROM SECTION CORNERS BUT SET NOTHING. VAR 6 2647.92' TO SW & SE CORNERS OF SEC 35. USED TO SUBDIVIDE SEC 35. 2655.84 VAR 5-34 FROM W  $\frac{1}{4}$  CORNER TO CENTER OF SEC 35 & 2648.5 VAR 5-34 FROM S  $\frac{1}{4}$  CORNER TO CENTER OF SEC 35. AT SW CORNER OF SEC 35, THE STUMP OF BEARING TREE DUG UP. BUT BOARD FENCE ON NORTH SAID OF ROAD SAID TO BE CORNER LINE - FIXED - SECTION CORNER TO BE CORNER LINE - FIXED - SECTION CORNER AT 33' SOUTH OF FENCE POST.

1893 PLAT BOOK SHOWS STATELINE ROAD GOING WEST FROM SE CORNER OF CLINTON TOWNSHIP AND TURNING NORTH NEAR S  $\frac{1}{4}$  COR SEC 34 TURTLE TWP.

1983 A.G. OPINION. ED GARVEY DEPUTY ATTORNEY GENERAL FOR THE WISCONSIN DEPARTMENT OF JUSTICE ATTORNEY GENERAL'S OFFICE WROTE AN OPINION DATED OCTOBER 18, 1983. THE OPINION SUPPORTS THE AUTHORIZATION PROCEDURE STATED IN THE "MANUAL OF INSTRUCTIONS FOR THE SURVEY OF THE PUBLIC LANDS OF THE UNITED STATES" (1973) WHICH WISCONSIN ADOPTED. PER WI STATUTES 59.62 AND SECTION 5-19 OF THE MANUAL REQUIRES FOR THE REPLACEMENT OF A "LOST" STATE BOUNDARY MONUMENT AN ORDER FROM THE UNITED STATES SUPREME COURT OR AUTHORIZATION OF THE ADJOINING STATES PLUS CONGRESSIONAL APPROVAL.

Donald Baues  
May 28, 2001

USING THE TERRITORIAL ROAD RECORDS THE FOLLOWING TABLE WAS MADE:

CORNER TO CORNER	ROAD REC.	CHAINS	FT	LYON 1832	FT	SPRIGG 1839	FT	BARNES	FT
T1N R14E									
SE 36 TO SW 36		80.04	5,282.64	5,280		5,320.26		5,310.34	
SW 36 TO S ¼ 34		119.79	7,906.14	7,920				7,950.73	
S ¼ 34 TO SW 34		40.57	2,677.62	2,640				2,650.99	
SW 34 TO S ¼ 31		200.38	13,225.08	13,200				13,276.17	
S ¼ 31 TO SW 31		40.13	2,648.58	2,640				2,638.94	
SE 36 TO S ¼ 33		280.63	18,521.58	18,480				18,504.69	
T1N R13E									
S ¼ 33 TO SW 31		200.06	13,203.96	13,200				13,233.16	
T1N R13E									
		TOTAL	63,465.6	63,360				63,565.02	
		BARNES	63,565.02	63,565.02					
		DIFFERENCE	99.42	205.02					

IN THE LATE 1980s, I SENT AN AUTHORIZATION REQUEST TO THE U.S. SUPREME COURT FOR ESTABLISHING A LOST CORNER ON THE STATE LINE. THEY DID NOT RESPOND. I ALSO REQUESTED FROM SENATOR WILLIAM PROXMIRE A COPY OF A BILL THAT WAS ADOPTED BY THE U.S. CONGRESS ON AUGUST 11, 1955 THAT AUTHORIZED THE SURVEY OF THE STATE LINE BETWEEN MARYLAND AND THE STATE OF DELAWARE. IN 1999, I REQUESTED A COPY OF THE HOUSE JOINT RESOLUTION 62 FROM REPRESENTATIVE PAUL RYAN. THIS JULY 22, 1999 RESOLUTION GRANTED THE CONSENT OF CONGRESS TO THE BOUNDARY CHANGE BETWEEN GEORGIA AND SOUTH CAROLINA.

A CURSORY REVIEW OF THE CORNER MONUMENT RECORDS ALONG THE STATE LINE IN CLINTON TOWNSHIP REVEALS THE FOLLOWING:

- 1) AT THE SE COR OF SEC 36 CLINTON TWP. A WELL DECAYED WOOD STAKE WAS FOUND AT AT THE CENTER OF THE ROAD & 8.0' BELOW THE RD. BY KOLB & MONUMENTED BY LLOYD JENSEN AS THE SEC COR. THIS MAY BE IN FACT THE WOOD STAKE PLACED BY THE 1848 TERRITORIAL ROAD SURVEY WHICH WAS 33' NORTH OF THE SE CORNER OF SEC 36.
- 2) EXCAVATION FOR SECTION CORNERS INDICATE THAT AT THE FOLLOWING LOCATIONS THE CURRENT PAVEMENT GENERALLY FOLLOWED THE OLD TERRITORIAL ROAD. SE COR SEC 35 (2' DEEP FD PIPE) & SE COR SEC 36 FD OLD RD 8' DEEP. OF THE CLINTON TOWNSHIP CORNERS ALONG THE STATE LINE ONLY THE FOLLOWING WERE DOCUMENTED AS POSSIBLE PERPETUATED MONUMENTS:
  - A) SE 31 CENTER OF PVMT. 1997 FD 1.8' DEEP OLD ROTTED STAKE SURROUNDED BY 3 HH. IN HARMONY WITH POSSIBLE B.T. 5.3' SOUTH OF CENTER OF PVMT.
  - B) SE 33 CENTER OF PVMT. 1884 FD REMAINS OLD STAKE & W.E. BT HAD BEEN DUG UP. SET IN PLACE OF OLD STAKE L.S. 17X19X3 ½ SURROUNDED BY 4 HH. 1960 FD L.S SURROUNDED BY 4 HH
  - C) SE SEC 35 1866 FD STUMP OF W. BT & WHERE E. B.T. WAS DUG OUT & OLD STAKE. SET STAKE WITH FLAT L.S. ON N, S, E, & W. 1866 FD STAKE & STONES SET BY LOCK IN 1866. 1967 FD FLAT L.S. DID NOT FIND STAKE. - AT CENTER OF PMT.

THE CORNER LOCATIONS ALONG THE STATE LINE IN TURTLE TOWNSHIP RANGE FROM THE SOUTH RIGHT OF WAY TO THE NORTH RIGHT OF WAY AS FENCED. NEAR THE S ¼ COR SEC 34 TURTLE TWP THE STATE LINE GOES NORTH AND DOES NOT CONTINUE WEST AS THE ROAD RECORDS CALL FOR.

*Donald Barnes*  
 May 28, 2001

THE MAP OF THE RECORD DISTANCES ALONG THE STATE LINE SHOWS RECORD DISTANCES TO THE ILLINOIS CLOSING CORNERS AND DISTANCES TO THE SOUTHERN ILLINOIS CORNERS. ONCE ACTUAL MEASUREMENTS ARE MADE, THIS WILL PROBABLY CLARIFY SOME OF THE DISCREPANCIES OF THE CLINTON TOWNSHIP CORNERS ALONG THE STATE LINE. ALSO THE PROPOSED 1' DIGITAL AIR PHOTOS WILL INCLUDE A BUFFER STRIP ALONG THE STATE LINE WHICH WILL BE HELPFUL. THE MEASUREMENTS AND PHOTOS SHOULD ALSO HELP IN RESOLVING THE TERRITORIAL ROAD RECORDS STATEMENT THAT THE CENTER OF THE ROAD RUNS PARALLEL AND 33' NORTH OF THE STATE LINE.

THE REASON THE EARLY 1800s DISTANCES MAY NOT BE CLOSE TO RECENT MEASUREMENTS IS BECAUSE OF THE MASTER CHAIN THAT WAS IN DETROIT. MANY YEARS AGO I ATTENDED A NATIONAL SURVEYORS' CONFERENCE AND ONE OF THE SPEAKERS SAID THAT MASTER TAPE IN DETROIT THAT THE SURVEYORS USED TO CALIBRATE THEIR STANDARD TAPE TO WAS IN ERROR BY SEVERAL TENTHS.

*C) Was the corner restored through acceptance of (1) an obliterated evidence location, or, (2) a found perpetuated location?*

THE CORNER WAS NOT RESTORED.

*D) Describe any material discrepancy between the location of the corner as restored or reestablished and the location of that corner as previously restored or reestablished by distance and direction. Show the discrepancy on the plan view drawing under (a), above. Show the distances between the corner as previously restored or reestablished and (1) the corner as restored or reestablished, and (2) to at least 4 of the witness monuments shown on the drawing in (a), above.*

N/A

*(E) Was the corner reestablished through lost corner proportionate methods? If so, show the method, including the directions and distances to other public land survey corners used as evidence or used for proportioning the corner location.*

THE CORNER IS "LOST" AND PROPER AUTHORITY IS BEING REQUESTED.

I, Donald Barnes, hereby certify that the corner location as identified by the corner code index was determined by me under my direction and control and that this U.S. Public Land Survey Monument Record is correct and complete to the best of my knowledge and belief.

Seal

PAGE 11 OF 17

Emboss

*Donald Barnes*  
*May 28, 2001*

CORNER CODE **Z-19**

A-E 7.08 REQUIREMENT

*Dwight Barnes  
May 28, 2001*

WALWORTH COUNTY  
T1N R15E  
SHARON TWP

CTY IS THE DATA SUPPLIED BY THE WALWORTH  
COUNTY SURVEYOR. THIS IS THE REMONUMENTATION  
DISTANCE.

31	1839 PG 335 2666.4 1832 LYDN 2640	CTY 2652.97	1839 PG 334 2667.58 1832 LYDN 2640	CTY 2667.58	1839 PG 334 2657.15 1832 LYDN 2640	1848 TERRITORIAL RD RECORDS VAR 7-10 1839 PL VAR 7-30E	CTY 2649.27	32	1839 PG 333 2646.20 1832 LYDN 2640	CTY 2646.20	1839 PG 333 2672.34 1832 LYDN 2640	CTY 2656.03 1839 PG 333 2656.03 1832 LYDN 2640	CTY 2649.07	33	1839 PG 332 2658.67 1832 LYDN 2640	CTY 2658.67	1839 PG 332 2653.2 1832 LYDN 2640	CTY 2652.71	34	1839 PG 332 2641.58 1832 LYDN 2640	CTY 2641.58	1832 LYDN 2640	CTY 2664.12 1832 LYDN 2640	35	1839 PG 335 389.4 1832 LYDN 2640	CTY 2664.12 1832 LYDN 2640	1832 LYDN 2640	CTY 2664.12 1832 LYDN 2640	DRIG 2640 5.79
----	--------------------------------------	-------------	---------------------------------------	-------------	---------------------------------------	---	-------------	----	---------------------------------------	-------------	---------------------------------------	--	-------------	----	---------------------------------------	-------------	--------------------------------------	-------------	----	---------------------------------------	-------------	----------------	-------------------------------	----	-------------------------------------	-------------------------------	----------------	-------------------------------	-------------------

1839 SPRIGG (INTERIOR)  
LE ROY TWP  
T46N R4E  
3rd P.M.

1  
2  
3  
6

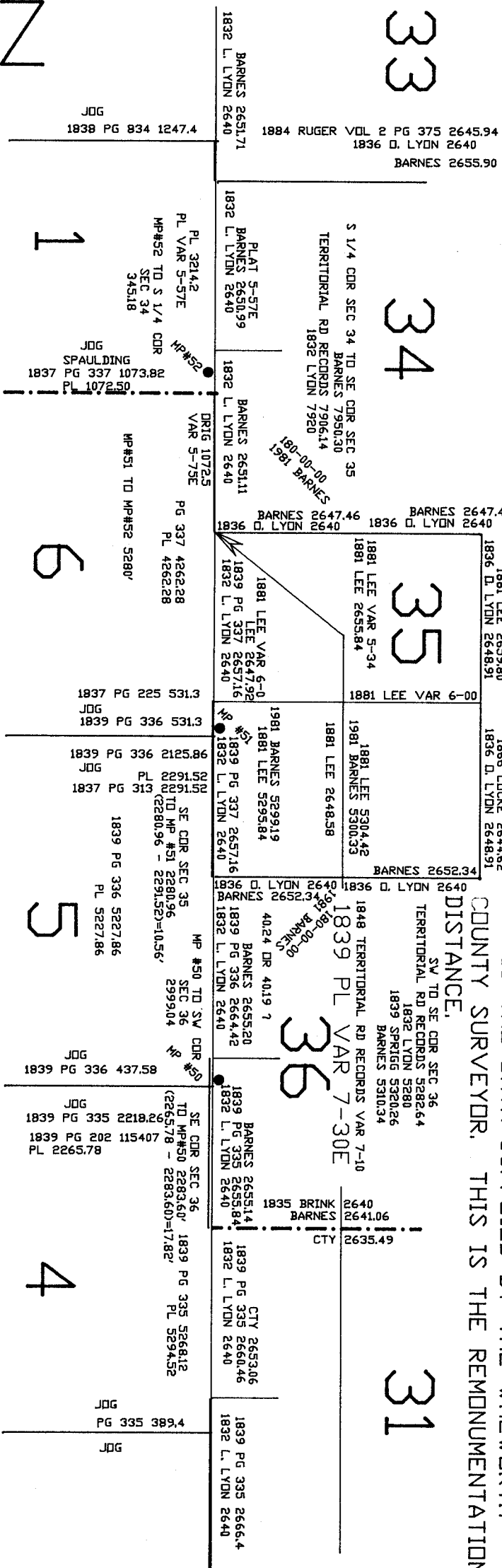
PL REPRESENTS THE DISTANCE ON THE ORIGINAL GOV. PLAT  
PG REPRESENTS THE PAGE NUMBER ON THE ORIG. ILL. GOV. FIELD NOTES

● APPROXIMATE LOCATION OF MILE POST AS CALLED FOR IN TERRITORIAL ROAD FIELD NOTES

N-1-D PAGE 12 of 17

*Donald Barnes  
May 28, 2001*

ROCK COUNTY  
T1N R14E 4th P.M.  
CLINTON TWP



N-19  
PAGE 13 of 17

1839 SPRIGG (INTERIOR)  
LE ROY TWP  
T46N R4E  
3rd P.M.

CTY IS THE DATA SUPPLIED BY THE WALWORTH COUNTY SURVEYOR. THIS IS THE REMONUMENTATION DISTANCE.

PL REPRESENTS THE DISTANCE ON THE ORIGINAL GOV. PLAT  
PG REPRESENTS THE PAGE NUMBER ON THE ORIG. ILL. GOV. FIELD NOTES

• APPROXIMATE LOCATION OF MILE POST AS CALLED FOR IN TERRITORIAL ROAD FIELD NOTES



The State of Wisconsin  
Department of Justice

123 West Washington Avenue  
Mailing Address: P.O. Box 7857  
Madison, Wisconsin 53707

October 18, 1983

Bronson C. La Follette  
Attorney General

Ed Garvey  
Deputy Attorney General

DATE RECEIVED  
10/20/83  
ROCK COUNTY CORPORATION COUNSEL  
JANESVILLE, WISCONSIN

Mr. Thomas A. Schroeder  
Corporation Counsel  
51 South Main Street  
Janesville, Wisconsin 53545

Re: Survey of boundary between Wisconsin and Illinois

Dear Mr. Schroeder:

In response to your letter of September 23, 1983, concerning replacement of a lost monument marking the Wisconsin-Illinois state line between Rock County, Wisconsin, and Winnebago County, Illinois, I submit the following:

The Wisconsin Constitution, article II, section 1, narrates generally the Wisconsin-Illinois boundary as follows:

Thence down the center of the main channel of that river [Mississippi] to the northwest corner of the state of Illinois; thence due east with the northern boundary of the state of Illinois to the place of beginning, as established by "An act to enable the people of the Illinois territory to form a constitution and state government, ..."

The original intent of Congress was to establish the boundary at 42° 30' north latitude. However, errors occurred in determining the precise latitude by the original surveyors so that the boundary actually established tilts above that latitude at the Mississippi River and below that latitude at Lake Michigan with the fulcrum lying somewhere in eastern Green County, Wisconsin. Thus, care must be taken when replacing lost state line measurements on this line.

Wisconsin has adopted the Manual of Instructions for the Survey of the Public Lands of the United States (1973) for such surveys. See sec. 59.62, Stats. The Manual, section 5-19, requires an order of the United States Supreme Court or authorization of the adjoining states plus congressional approval to

replace a lost state boundary monument. Therefore, it is my opinion that such authorizations must be secured before a lost state boundary marker can be reset.

Sincerely yours,

*B. C. La Follette*  
Bronson C. La Follette  
Attorney General

219

PG 14  
OF 17

24th CONGRESS,  
1st Session.

[ 234 ]

REPORT

OF THE

SECRETARY OF THE TREASURY,

*With a report of the survey of the northern boundary line of Illinois,  
furnished in obedience to a resolution of the Senate of the 22d instant.*

DECEMBER 29, 1835.—Referred to the select committee on the admission of Michigan, &c.  
MARCH 10, 1835.—Ordered to be printed.

TREASURY DEPARTMENT.

December 28, 1835.

SIR: In obedience to the resolution of the Senate of the 22d instant, directing the Secretary of the Treasury "to cause to be laid before the Senate the report and survey of the commissioners appointed to survey and mark the northern boundary line of the State of Illinois, in pursuance of the law of the United States passed 18th April, 1831," I have the honor herewith to transmit to the Senate a report from the Commissioner of the General Land Office, to whom this resolution was referred.

I am, very respectfully, &c.

LEVI WOODBURY,  
*Secretary of the Treasury.*

HON. M. VAN BUREN,  
*Vice President of the United States,  
and President of the Senate.*

GENERAL LAND OFFICE,

December 28, 1835.

SIR: In obedience to a resolution of the Senate of the United States of the 22d ultimo, "that the Secretary of the Treasury be directed to cause to be laid before the Senate the report and survey of the commissioners appointed to survey and mark the northern boundary line of the State of Illinois, in pursuance of the law of the United States passed April 18, 1831," and which you have referred to this office, I have the honor to transmit herewith a copy of the report made to the President of the United States by the commissioners aforesaid, (and which was filed in the Department of State,) showing the result of their operations under the law referred to.

I have the honor to be, very respectfully,

Your obedient servant,

ETHAN A. BROWN,  
*Commissioner.*

HON. LEVI WOODBURY,  
*Secretary of the Treasury.*

PG 15 OF 17

219



GALENA, Illinois, January 29, 1838.

SIR: I have the honor herewith to enclose the report of the board of commissioners appointed to ascertain and mark the northern boundary line of the State of Illinois, a duplicate of which report has this day been forwarded to the Executive of the State.

With profound respect,

I am, sir, your very obedient servant,

LUCIUS LYON,

Commissioner on the part of the U. S.

To ANDREW JACKSON,  
President of the United States.

GALENA, Illinois,

January 29, 1838.

SIR: In obedience to the directions of an act of the General Assembly of the State of Illinois, entitled "An act to ascertain and survey the northern boundary of this State," and an act of the Congress of the United States, entitled "An act to ascertain and mark the line between the State of Alabama and the Territory of Florida, and the northern boundary of the State of Illinois, and for other purposes," the commissioners appointed under said acts have the honor to report:

That as soon as practicable after the appointment of the commissioner on the part of the United States, the board, pursuant to arrangement, met at Galena, in the latter part of October, 1831, preparatory to commencing the survey which is now just completed. Mr. Daniel R. Davis, on the part of the United States, and Mr. Andrew M. Braley, on the part of the State, were engaged as assistant observers and surveyors for so much of the boundary as might be established during the current year; and the party, with the necessary instruments and outfit, proceeded immediately to a place on the Mississippi river near the latitude in which the line was to be established, for the purpose of commencing operations.

The weather at that time was exceedingly unfavorable for astronomical observations, and more than a month elapsed before a series could be made to the entire satisfaction of the board. This, however, having been done, a stone about seven feet long, and estimated to weigh about five tons, was hewn at one end and set firmly in the ground at high water mark, on the left or east bank of the Mississippi river, in latitude forty-two degrees and thirty minutes north from the place of beginning.

On the south side of the stone was cut the word "Illinois;" on the north side "Michigan;" on the west "N. boundary of Illinois, lat. 42° 30' N."

Having erected this monument at the place of beginning, in the latitude defined to be the northern boundary of the State by an act of Congress, entitled "An act to enable the people of the Illinois Territory to form a constitution and State government," passed the eighteenth day of April, one thousand eight hundred and eighteen, the survey of the boundary was commenced and continued due east ten miles sixty-nine chains

and thirty links, to its intersection with the fourth principal meridian of the surveys of the public lands, six miles and twenty chains north of the town of Galena.

A mound of earth six feet square at the base and six feet high, was erected to mark the place of intersection, which is half a mile east of the main road leading from Galena to Mineral point, in the mining district, and from it a white-oak tree, twenty inches in diameter, bears north thirty-one and a half degrees east, six chains and fifty-six links distant.

Here, on account of the lateness of the season and the inclemency of the weather, the work was discontinued for the winter, with the intention that it should be resumed as early as practicable on the following spring. As due, however, to the interest felt in the establishment of the boundary, by the citizens of the State and Territory living near it, on either side, before leaving the survey, a random line was run out eighteen miles due east, to a point beyond all the settlements in that direction.

It was also agreed by the board before its adjournment, that, as a measure recommended by considerations of economy, there should be employed on the remainder of the line but one person with the compass, and, in pursuance of this arrangement, the present commissioner on the part of the State was then appointed sole surveyor.

The early indications of hostility on the part of the Indians, through some part of whose country the line would run, prevented the meeting of the board in the spring; and after the settlement of the disturbance on the frontier, it was not until the last of October, 1832, that arrangements could be made to resume the work.

About that time the surveyor arrived, and the business was recommenced under the direction of one of the board who had been some time present; and while the commissioner on the part of the State, (Hiram Roundtree, Esq.) was daily expected, information was received of his sickness and resignation, and the appointment of the present commissioner to fill the vacancy. Mr. Andrew M. Braley arriving about the same time with despatches from the Executive of the State, and the instruments belonging to one of the board, was engaged as an assistant practical astronomer; and the necessary assistants having been employed, the survey was continued, and the work advanced as rapidly as the high state of water in the rivers and streams, and a due regard to accuracy, would permit.

From its intersection with the fourth principal meridian, the point where the work was left on the preceding year, the line was continued east about seventy miles to Rock river, where, after a series of celestial observations, it was found that, in the distance already run, we had diverged from the equator fifty-four seconds in latitude—a distance so great as to render it necessary to make a correction.

This divergence is attributable to the great and frequent fluctuations of the variation of the magnetic needle, and the general decrease of its variation in going eastwardly in this longitude, the effect of which, although frequent observations were made to ascertain the true meridian, is sufficient not only to counteract the tendency of the line towards the equator, but also to account satisfactorily for the error here found.

Having offset due south to the latitude 42° 30' N., and established, in a permanent and conspicuous manner, a starting point on the left or east

PG 16 of 17

219

bank of Rock river, the survey was continued eastward, and celestial observations, both to ascertain the latitude and variation of the compass, being frequently made, the line was extended through to Lake Michigan, with so little variation from the true latitude as to render correction unnecessary.

At its intersection with the western shore of the lake, it was the intention of the commissioners to establish a permanent stone monument similar to the one set up at the beginning of the line on the Mississippi; the scarcity, however, and the great expense of procuring stone, induced them to relinquish the idea, and to rely on such marks, artificial and natural, as they were enabled to make and to describe.

An oak post a foot square and nine feet long, was set firmly in the ground to the depth of five feet, in a small thicket of willows, about one chain from the water's edge. This post stands at the termination of the surveyed line, and from it a black oak tree, fifteen inches in diameter, bears south twenty degrees east, three hundred and sixty-one links distant; a black oak twelve inches in diameter, bears north forty-five and a half degrees west, one hundred and fifty-six links distant; a black oak twelve inches in diameter, bears north fourteen and a half degrees west, two hundred and thirty-nine links distant; a black oak fifteen inches in diameter, bears north seventy-five degrees west, one hundred and seventy-two links distant; a black oak twelve inches in diameter, bears north one degree west, three hundred and eighty-four links distant; and a black oak ten inches in diameter, bears south thirty degrees east, two hundred and twenty-eight links distant.

The three first trees are marked with a notch in a blaze near the ground and facing the post, the three last are not blazed but have nails driven into them, out of sight, about three feet from the ground on the side nearest the post.

In addition to this it may be of service to add, that the post stands on a bend of the lake shore, called by the Indians "Black-oak point." The bearing of the shore from half a mile south to two and a half miles north, is about north fourteen degrees west, and at the distance of about half a mile north of the post a prairie extends to the border of the lake. Point Mich-e-pe-cot-ton bears north three degrees and twenty minutes east, fifteen and one-fourth miles distant, and north of the line about six or seven miles a small stream called "Pike creek," empties into the lake. The post is estimated to be forty miles north from Chicago, and ten miles north of a place known by the name of "Little Fort."

Having marked, as permanently and conspicuously as practicable, the termination of the boundary on the lake, and procured from Chicago the necessary supplies, the commissioners and party returned westward for the purpose of making the requisite correction of the line from Rock river to a point eighteen miles east of the fourth principal meridian.

After considerable difficulty and some delay, on account of high water and bad weather, this was finished on the seventeenth instant, and the party returned to Galena, having completed the entire survey.

In marking the boundary it was found impracticable, without incurring an unwarrantable expense, to do it in the manner prescribed by the second section of an act of the General Assembly of the State of Illinois, entitled "An act to amend an act," &c., passed February 5, 1831.

And, as the best substitute within the means of the board, it was deemed expedient to mark the line by blazing the trees as in the surveys of the public lands of the United States, but in a more conspicuous manner, and in lieu of the stones required to be set up, at the distance of every five miles, corners were made at the end of every mile and half mile, after the manner of the public surveys.

The distances from the monument on the Mississippi to the principal points on the line, which may be regarded as natural marks to determine its location, are as follows, viz.

- 4 70.00, to a point one mile and five chains south of the southern base of the Sinsinaway mound, in the mining district.
- 10 69.30, to the fourth principal meridian, at a point six and one-fourth miles north from the town of Galena.
- 12 57.80, to the north branch of Fever river, running south, half a mile south of a small place called "Buncomb."
- 18 10.00, to a point about thirty chains south of the White-oak springs, on the road from Galena to Fort Winnebago.
- 21 00.00, to a point two and a half miles north of Gratio's grove.
- 43 1.39, to a post set on the right or west bank of the Peek-a-to-lake river, which is here four chains wide and runs south.
- 70 29.00, to Sugar river, which is about two chains wide and runs south.
- 81 31.09, to a post on the left or east bank of Rock river, ten chains above its junction with Turtle river. Rock river is here about seven chains wide and runs south.
- 125 9.10, to a post on the right or west bank of Fox river, which is here 2.17 chains wide and runs south.
- 138 8.99, to the west bank of the River des Plaines, which is about eighty links wide and runs south.
- 144 48.80, to a post before described, standing on the border of Lake Michigan, the termination of the survey.

The country through which this boundary line has been established having been the principal theatre of the late Indian war, is now so well and so generally known as scarcely to require description. Throughout its whole extent, from the Mississippi to the lake, it is with few exceptions made up of open wood land, (timbered chiefly with oak,) with prairies of various size and quality interspersed. Some marshes and swamps are found, but they are small and few in number. In the maining district, which there is good reason to believe extends to within thirty miles of the lake, the soil is almost invariably good, the surface rolling, the waters pure and abundant, and it requires not the spirit of prophecy to foretell, that when surveyed and offered for sale, the whole country will within a few years attract and sustain a numerous and thriving population.

All of which is respectfully submitted,

JOHN MESSENGER,

Commissioner of the State of Illinois.

LUCIUS LYON,

Commissioner on the part of the United States.

To ANDREW JACKSON,  
President of the United States.

P 617 OF 17

212