

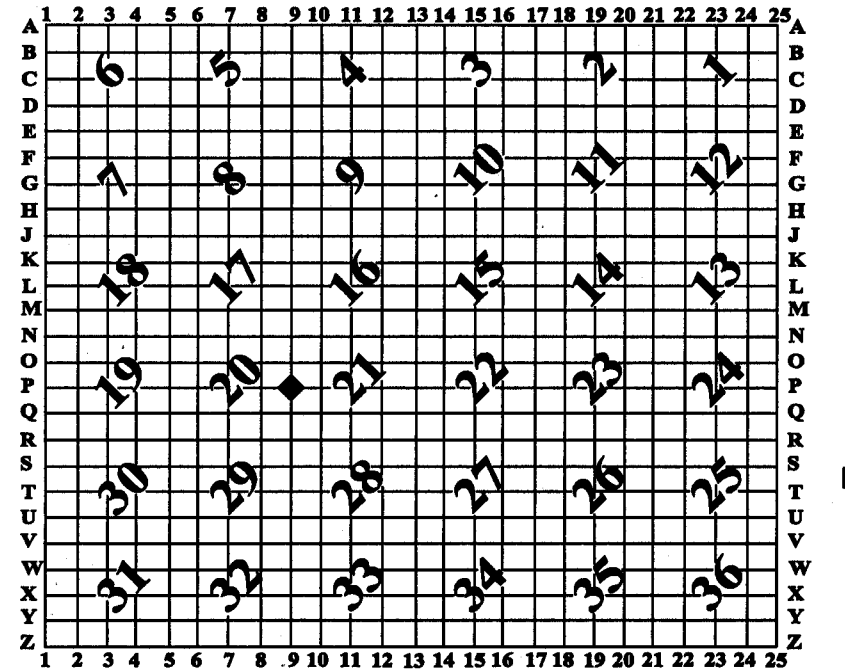
U.S. PUBLIC LAND SURVEY MONUMENT RECORD

For Public Land Survey Corners In: **WI ADMINISTRATIVE CODE A-E 7.08 REQUIREMENT**

T. 1 N. - R. 14 E. of the 4th P.M.

CORNER CODE INDEX

(PLACE "◆" SYMBOL AT PROPER PLSS CORNER LOCATION)



CLINTON TWP
ROCK COUNTY WI

COORDINATES
(GNSS DERIVED VIA WISCORS)

NORTHING: 213317.760

EASTING: 538451.538

ELEV: _____

Hor. Datum: WCCS-ROCK, (NAD83 2011)

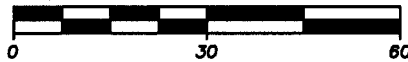
Vertical Datum: NAVD 88

(a) LEGEND



SCALE: 1" = 30'

GRAPHIC BAR SCALE:



LEGEND:



Cast Aluminum monument reset.



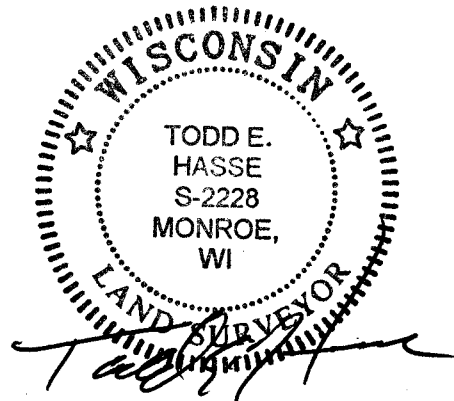
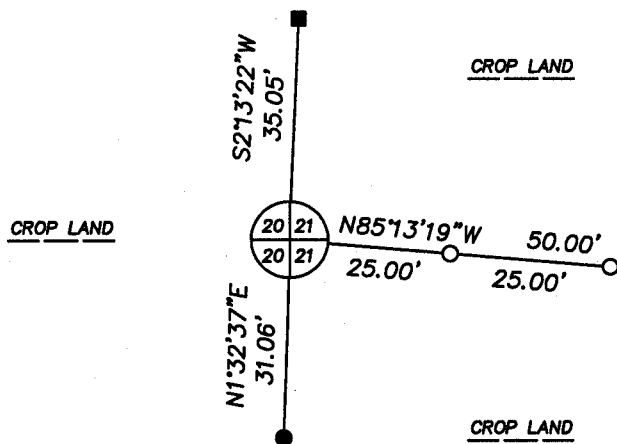
1 1/2" iron pipe found.



1 1/2" iron pipe with cap found.



3/4" X 24" solid round iron rod set, weighing 1.50 lbs per lineal ft.



PREPARED FOR:

American Transmission Company
c/o Patrick Cowell
5303 Fen. Oak Drive
Madison, WI 53718-8810
(608) 877-7130

HASSE
SURVEYING
W6820 ILIFF ROAD
MONROE, WI 53566
(608) 328-5321 PHONE
(608) 328-5321 FAX

U.S. PUBLIC LAND SURVEY MONUMENT RECORD

- (B) Describe any record evidence, monument evidence, occupational evidence, testimonial evidence or any other material evidence you considered, and whether the monument was found or placed.

This monument location was previously established by Rock County Surveyor Donald Barnes on 7-4-1976. I found a Berntsen Cast Aluminum monument 10" out of the ground and discovered that the monument was broken at the lower shear point. I had the monument repaired and reset the monument from the (2) existing witness monuments as found and from information obtained from County Surveyor Jason Houle from the neighboring section corners. I set (2) new witness monuments as shown and the top of the monument was set flush with the existing grade.

- (C) Was the corner restored through acceptance of (1) an obliterated evidence location, or, (2) a found perpetuated location?

This monument location was a found perpetuated location.

- (D) Describe any material discrepancy between the location of the corner as restored or reestablished and the location of that corner as previously restored or reestablished by distance and direction. Show the discrepancy on the plan view drawing under (a), above. Show the distances between the corner as previously restored or reestablished an (1) the corner as restored or reestablished, and (2) to at least 4 of the witness monuments shown on the drawing in (a) above.

- (E) Was the corner reestablished through lost corner proportionate methods? If so, show the method, including the directions and distances to other public land survey corners used as evidence or used for proportioning the corner location.

E 1/4 corner to NE corner	N00°10'57"W, 2658.38'
E 1/4 corner to SE corner	S00°20'58"E, 2660.21'
E 1/4 corner to W 1/4 corner	N88°05'55"W, 5294.50'

I, Todd E. Hasse, hereby certify that this corner location as identified by the corner code index, was determined by me and under my direction and control and that this U.S. Public Land Survey Monument Record is correct and complete to the best of my knowledge and belief.



January 14th, 2014