

Paper weight-110# (minimum)

Black nonfading ink required

# U.S. PUBLIC LAND SURVEY MONUMENT RECORD

For Public Land Survey Corners In:

WI ADMINISTRATIVE CODE A-E 7.08 REQUIREMENT

T. 1 N. R. 4 E. 4th P.M.

REV 10/23/2004

USMONREC.DWG

CORNER CODE INDEX

CLINTON TWP

ROCK COUNTY WI

IF AVAILABLE

ROCK COUNTY COORDINATES PREFERRED

North 221283.897 Elev. \_\_\_\_\_

East 538424.248

Hor. Datum \_\_\_\_\_ Vert. Datum \_\_\_\_\_

LATITUDE \_\_\_\_\_ ELLIPS. HT. \_\_\_\_\_

LONGITUDE \_\_\_\_\_

NAD83(91) \_\_\_\_\_ NETWORK ADJ. YR \_\_\_\_\_

GPS (X) \_\_\_\_\_ TRAVERSE (X) \_\_\_\_\_

BASED ON THE FOLLOWING CONTROL:

ROCK COUNTY MONUMENT COORDINATE LIST

1	2	3	4	5	6	7	8	9	10	11	12	13	14	15	16	17	18	19	20	21	22	23	24	25	
A																									A
B	6																								B
C		5																							C
D			4																						D
E				3																					E
F					2																				F
G	7																								G
H		8																							H
I			9																						I
J				10																					J
K					11																				K
L	18																								L
M		17																							M
N			16																						N
O				15																					O
P					14																				P
Q	19																								Q
R		20																							R
S			21																						S
T				22																					T
U					23																				U
V						24																			V
W	30																								W
X		29																							X
Y			28																						Y
Z				27																					Z
					26																				
						25																			
	31																								
		32																							
			33																						
				34																					
					35																				
						36																			

PLACE MONUMENT SYMBOL **◆** AT PROPER LOCATION ON ABOVE INDEX

**◆** CORNER MONUMENT

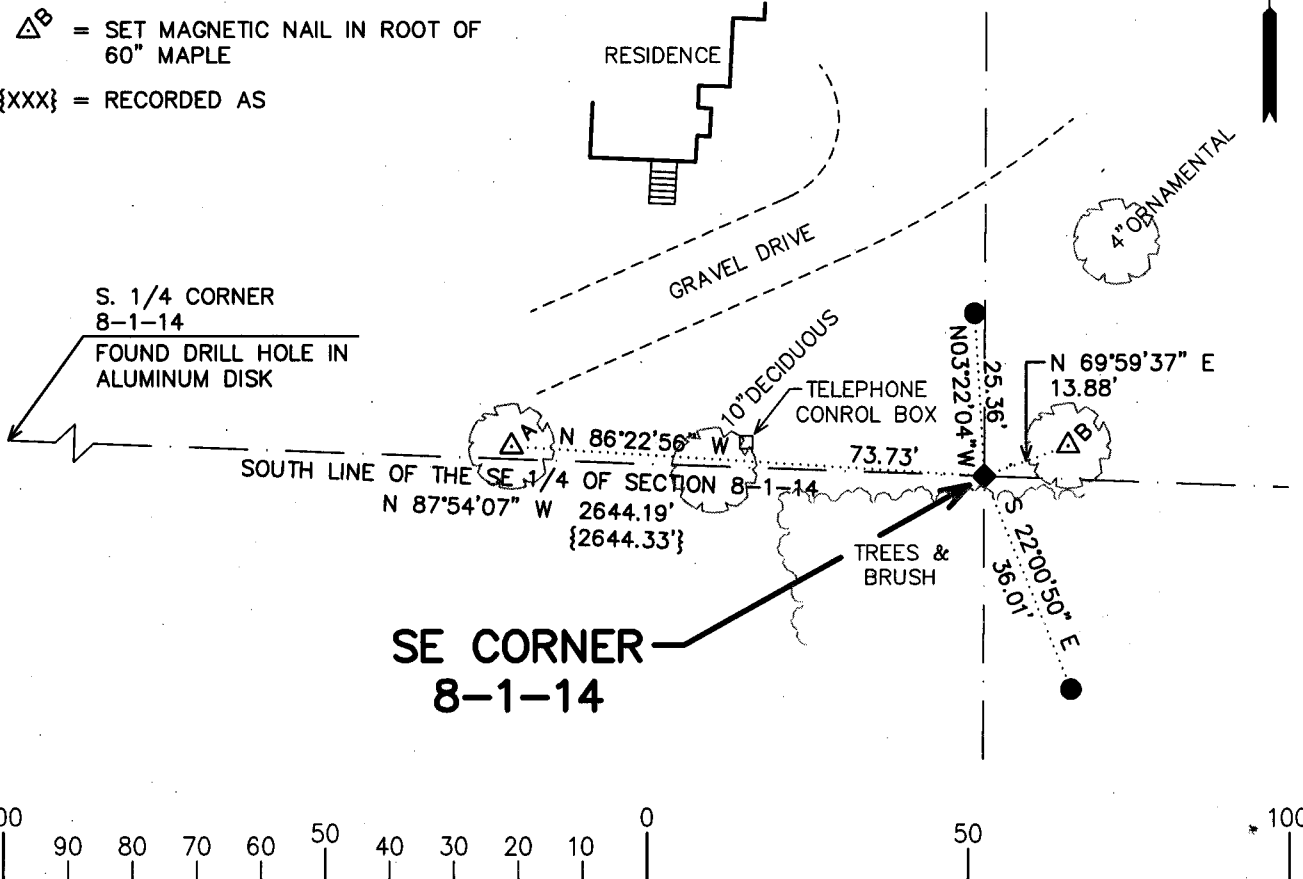
**○** WITNESS MONUMENT

(a)

### LEGEND

- ◆** = CENTER OF 4" METAL DISK
- = SET IRON REBAR STAKE, 3/4" DIA. x 24" x 1.13 lbs./ft.
- △<sup>A</sup>** = SET MAGNETIC NAIL IN CROTCH OF TRIPLE 12" MAPLE
- △<sup>B</sup>** = SET MAGNETIC NAIL IN ROOT OF 60" MAPLE
- {XXX} = RECORDED AS

ROCK COUNTY COORDINATE SYSTEM  
S. LINE SE 1/4 SEC. 8-14  
BEARINGS ARE BASED ON:  
BEARS N 87°54'07" W



**SE CORNER**  
**8-1-14**

MAP SCALE IN FEET ORIGINAL 1" = 30'

FIELD BOOK \_\_\_\_\_ PAGE # \_\_\_\_\_

SHEET 1 OF 2

SHOW A PLAN VIEW DRAWING DEPICTING THE CORNER MONUMENT AND SURROUNDING PHYSICAL FEATURES, INCLUDING THE EXCAVATION AREA AND DEPTH.

PLANNING & ZONING COMMITTEE ADOPTED THIS FORM ON 12/2/1982

CORNER CODE J-9

(B) Describe any record evidence, monument evidence, occupational evidence, testimonial evidence or any other material evidence you considered, and whether the monument was found or placed.

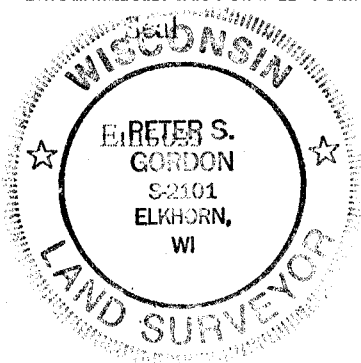
FOUND 4" DIAMETER METAL DISK WITH "ROCK COUNTY SURVEY MONUMENT" INSCRIBED ON ITS FACE. HELD CENTER OF DISK. SNOW & FROST MADE IDENTIFICATION OF THE MATERIAL IN WHICH THE DISK IS SET INDETERMINATE. FOUND 2" BELOW GRADE. ORANGE FIBERGLASS WITNESS POST PRESENT.

C) Was the corner restored through acceptance of (1) an obliterated evidence location, or, (2) a found perpetuated location?

D) Describe any material discrepancy between the location of the corner as restored or reestablished and the location of that corner as previously restored or reestablished by distance and direction. Show the discrepancy on the plan view drawing under (a), above. Show the distances between the corner as previously restored or reestablished and (1) the corner as restored or reestablished, and (2) to at least 4 of the witness monuments shown on the drawing in (a), above.

(E) Was the corner reestablished through lost corner proportionate methods? If so, show the method, including the directions and distances to other public land survey corners used as evidence or used for proportioning the corner location.

I, Peter S. Gordon, hereby certify that the corner location as identified by the corner code index was determined by me under my direction and control and that this U.S. Public Land Survey Monument Record is correct and complete to the best of my knowledge and belief.



*Peter S. Gordon*  
SHEET 2 OF 2  
2/15/2010

A.E. 7.08 REQUIREMENT CORNER CODE J-9