

~~U.S. PUBLIC LAND SURVEY MONUMENT RECORD~~

For Public Land Survey Corners in the

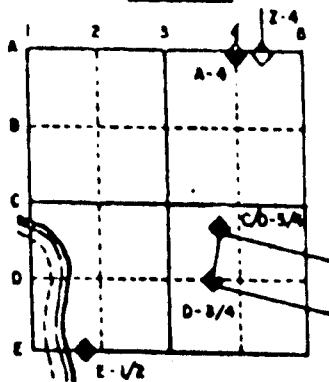
T. 1 N., R. 14 E.

CORNER CODE INDEX

	1	2	3	4	5	6	7	8	9	10	11	12	13	14	15	16	17	18	19	20	21	22	23	24	25
A																									
B																									
C	6	5	4	3	2																				
D																									
E																									
F																									
G	7	8	9	10	11	12																			
H																									
I																									
J																									
K	16	17	18	15	14	13																			
L																									
M																									
N																									
O																									
P	19	20	21	22	23	24																			
Q																									
R																									
S	30	29	28	27	26	25																			
T																									
U																									
V																									
W																									
X	31	32	33	34	35	36																			
Y																									
Z																									

PLACE MONUMENT SYMBOL (◆) AT PROPER LOCATION ON ABOVE INDEX

EXAMPLE



CLINTON TWP
ROCK COUNTY WI

IF AVAILABLE
STATE PLANE COORDINATES

North (Y) _____ Eleve. (Z) _____
 East (X) _____ Zone _____
 Hor. Datum _____ Vert. Datum _____

◆ CORNER MONUMENT

○ WITNESS MONUMENT

BEARINGS ARE BASED ON:

(B) Describe any record evidence, monument evidence, occupational evidence, testimonial evidence or any other material evidence you considered, and whether the monument was found or placed.

FOUND ALUMINUM MONUMENT OF RECORD.

C) Was the corner restored through acceptance of (1) an obliterated evidence location, or, (2) a found perpetuated location?

ACCEPTED FOUND PERPETUATED LOCATION

D) Describe any material discrepancy between the location of the corner as restored or reestablished and the location of that corner as previously restored or reestablished by distance and direction. Show the discrepancy on the plan view drawing under (a), above. Show the distances between the corner as previously restored or reestablished and (1) the corner as restored or reestablished, and (2) to at least 4 of the witness monuments shown on the drawing in (a), above.

(E) Was the corner reestablished through lost corner proportionate methods? If so, show the method, including the directions and distances to other public land survey corners used as evidence or used for proportioning the corner location.

NO

I, Donald Barnes, hereby certify that the corner points as identified by the corner code index were, in a field survey on, _____, 1994, established, re-established, monumented, re-monumented, recovered or restored as expressed below and in conformance with the regulations and rules as required in the current manual of survey instructions of the United States Department of Interior, Bureau of Land Management.

COUNTY SURVEYOR FILING DATA

seal

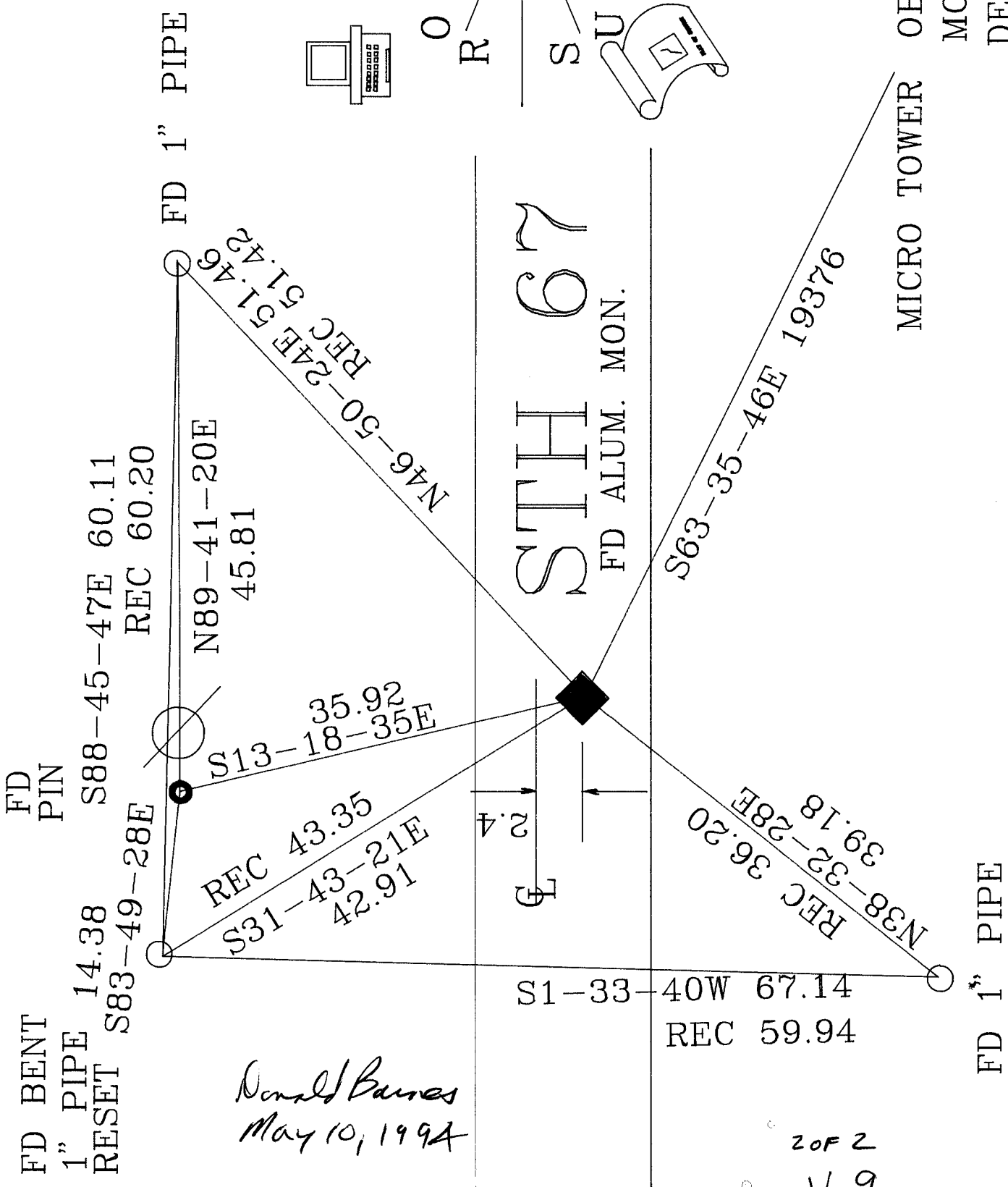
Date of computer entry _____

Date microfilmed _____

Number of included sheets 1
CORNER CODE

AFFIX YOUR LAND SURVEYOR SEAL

Donald Barnes
May 10, 1994



FD BENT
1" PIPE
RESET

S83-49-28E 14.38
S88-45-47E 60.11
REC 60.20

S31-43-21E 42.91
REC 43.35
S13-18-35E 35.92

N89-41-20E 45.81

FD 1" PIPE

N46-50-24E 51.46
REC 51.42

S1-33-40W 67.14
REC 59.94

STH 67
FD ALUM. MON.

S63-35-46E 19376

N38-32-28E 39.18
REC 36.20

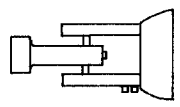
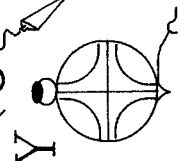
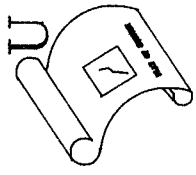
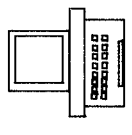
FD 1" PIPE

N

CLINTON
TOWNSHIP
PROJECT

C
O
U
N
T
Y

S
U
R
V
E
Y
O
F
F
I
C
E



*Donald Barnes
May 10, 1994*

MICRO TOWER OBSERVATION SHEET
MONUMENT WILL BE
DESTROYED BY CONSTRUCTION