

# U.S. PUBLIC LAND SURVEY MONUMENT RECORD

For Public Land Survey Corners in:

WI ADMINISTRATIVE CODE A-E 7.08 REQUIREMENT

T. 2N., R. 11E

### CORNER CODE INDEX

A	2	3	4	5	6	7	8	9	10	11	12	13	14	15	16	17	18	19	20	21	22	23	24	25
B	6																							
C																								
D																								
E																								
F																								
G	1																							
H																								
I																								
J																								
K																								
L	18																							
M																								
N																								
O																								
P	19																							
Q																								
R		20																						
S																								
T																								
U																								
V																								
W																								
X																								
Y																								
Z																								

PLYMOUTH TWP

ROCK COUNTY WI

IF AVAILABLE  
ROCK COUNTY COORDINATES PREFERRED

North \_\_\_\_\_ Elev. \_\_\_\_\_

East \_\_\_\_\_

Hor. Datum \_\_\_\_\_ Vert. Datum \_\_\_\_\_

LATITUDE \_\_\_\_\_ ELLIPS. HT. \_\_\_\_\_

LONGITUDE \_\_\_\_\_

GPS (X) \_\_\_\_\_ TRAVERSE (X) \_\_\_\_\_

BASED ON THE FOLLOWING CONTROL:

PLACE MONUMENT SYMBOL  AT PROPER LOCATION ON ABOVE INDEX

CORNER MONUMENT

WITNESS MONUMENT

(a)

BEARINGS ARE BASED ON:

OBSERVATION SHEETS 2749 900

FIELD BOOK \_\_\_\_\_ PAGE # \_\_\_\_\_

SHEET 1 OF 2

SHOW A PLAN VIEW DRAWING DEPICTING THE CORNER MONUMENT AND SURROUNDING PHYSICAL FEATURES, INCLUDING THE EXCAVATION AREA AND DEPTH.

PLANNING & ZONING COMMITTEE ADOPTED THE ABOVE FORM ON 12/2/1982

CORNER CODE E-7

PL524

(B) Describe any record evidence, monument evidence, occupational evidence, testimonial evidence or any other material evidence you considered, and whether the monument was found or placed.

- 1833 HARRISON EAST ON RAND. BET 5 & 8  
2640 TEMPY 1/4 P  
4620 LEFT TIMBER & ENTER MARSH  
5272.74 INT. E BDY 57.42' N. OF P.  
LAND ROLLING 2<sup>ND</sup> RATE WITH W.O. ASPEN TIMBER  
MUCH HAZEL  
COR WEST  
2636.37 QUARTER SEC COR {W.O. 30 S60E 84.48' W.O. 18  
N6W 67.32' W.O 30 W.O. 18} MARKED  
5272.74 SEC COR  
1858 CHURCH VOL 1 PG 76 2661.12 TO CEN SEC 8 & VAR 7 1/2  
5322.24 TO S 1/4 COR SEC 8.  
1865 LOCKE VOL 1 PG 234 FD SOUTH BT & STUMP OF N.BT. SET  
L.S. 17X12X2 IN MOUND. PIT 3' SOUTH. 5041.74 TO N 1/4  
COR SEC 5, & VAR 7-08 2607.26 TO SW COR SEC 5.  
1867 LOCKE VOL 1 PG 280 FD MOUND SET BY SELF. DUG OUT.  
FD S. BT & MOUND & PIT. SET STAKE SURROUNDED BY 3 L.S.  
2658.48 TO SE COR SEC 5, 2576.77 TO CEN SEC 5, &  
5061.01 TO N 1/4 COR SEC 5.  
1867 TWP RD REC BK 1 PG 54 COMMENCING AT A PT WHERE THE  
QUARTER LINE ON SEC 5 INTERSECTS THE RD RUNNING SW  
FROM FOOTVILLE, THENCE RUNNING SOUTH ON SAID 1/4 LINE  
TO THE 1/4 POST ON THE SOUTH LINE OF SEC 5; THENCE  
SOUTH ON THE QUARTER LINE OF SEC 8 TO THE QUARTER  
POST ON THE SOUTH LINE OF SAID SEC 8. ??????  
1868 LOCKE PG 56 EAST BETWEEN SECS 5 & 8 VAR 5-12  
1327.92 1/16<sup>TH</sup> COR SET BY SELF (SEE CO. S.  
RECORD)  
2655.84 INTERSECTED 1/4 LINE 11.88' SOUTH OF COR FOUND  
COR. AS SET BY SELF (SEE CO. S RECORD) AND  
SOUTH B.T. COR 16.5' NORTH OF COR. POST OF  
FENCE RUNNING S AND W. AND IN LINE WITH FENCE  
RUNNING S.  
VAR CORRECTED 5-27  
SET OFF 16.5' SOUTH OF 1/4 COR. AND  
CONTINUED EAST WITH VAR 5-05  
5316.3 INTERSECTED EAST BOUNDARY 16.17' SOUTH OF  
COR. VAR CORRECTED 5-05 SEPT 5 1868  
1868 LOCKE VOL 1 PG 309 FD S. BT & COR AS SET BY SELF. SEE  
SEC 5, VAR 5-25 2657.82 TO SW COR SEC 5 & VAR 7-22  
2680.92 TO CEN SEC 8.  
1892 BLEEDORN VOL 2 PG 463 2619.54 TO CEN SEC 5. STATES  
NOTHING ABOUT MON.  
1966 BATTERMAN VOL 4 PG 255 SET TIES BUT STATES NOTHING  
ABOUT MON.  
1966 THOM MAP #7567 SET 1" PIPE TO REPLACE IRON PIN AS  
SET AT S 1/4 COR BY RICHARDSON IN 1949. REFERENCED  
CORNER. TIES ARE THE SAME AS IN VOL 4 PG 255.  
1978 BARNES VOL 5 PG 501 SO-30-01E 2669.83 TO CEN SEC 8,  
SO-28-37E 2677.29 FROM CEN SEC 8 TO S 1/4 COR SEC 8.  
1983 COMBS MAP #13238 FD ALUM.  
1995 SCHROEDER CSM VOL 18 PG 213 USES COR BUT STATES  
NOTHING ABOUT IT.  
1998 COMBS CSM21-218 PK. 2656.35 TO SW COR SEC 5  
1999 KREBS MAP #7568 FD PIPE S89-07-29E 2660.54 TO SE COR  
SEC 5, N89-31-43W 2656.39 TO SW COR SEC 5, N1-06-30W  
2617.89 TO CENTER SEC 5, S1-06-59E 2669.36 TO CENTER  
SEC 8. BEARINGS BASED ON STATE PLANE COORDINATES  
FROM GPS ORFORDVILL GPS & ITS REFERENCE (N14-14-23E)  
2000 BARNES VOL 6 PG 455 SO-30-02E 2669.83 TO CEN SEC 8 &  
FROM CEN SEC 8 TO S 1/4 COR SEC 8 IS SO-28-37E 2677.26  
SHEET 1 OF 2 CORNER CODE E-7

Donald Bauer  
May 12 2003

# U.S. PUBLIC LAND SURVEY MONUMENT RECORD

For Public Land Survey Corners In:

WI ADMINISTRATIVE CODE A-E 7.08 REQUIREMENT

T. 2N. R. 11E.

CORNER CODE INDEX

1	2	3	4	5	6	7	8	9	10	11	12	13	14	15	16	17	18	19	20	21	22	23	24	25	
A																									A
B	6					5				4					3					2				1	B
C																									C
D																									D
E																									E
F																									F
G	7					8				9					10					11				12	G
H																									H
J																									J
K	18					17				16					15					14				13	K
L																									L
M																									M
N																									N
O																									O
P	19					20				21					22					23				24	P
Q																									Q
R																									R
S																									S
T	30					29				28					27					26				25	T
U																									U
V																									V
W																									W
X	31					32				33					34					35				36	X
Y																									Y
Z																									Z

PLYMOUTH TWP  
ROCK COUNTY WI

IF AVAILABLE  
ROCK COUNTY COORDINATES PREFERRED

North \_\_\_\_\_ Elev. \_\_\_\_\_

East \_\_\_\_\_

Hor. Datum \_\_\_\_\_ Vert. Datum \_\_\_\_\_

LATITUDE \_\_\_\_\_ ELLIPS. HT. \_\_\_\_\_

LONGITUDE \_\_\_\_\_

GPS (X) \_\_\_\_\_ TRAVERSE (X) \_\_\_\_\_

BASED ON THE FOLLOWING CONTROL:  
\_\_\_\_\_

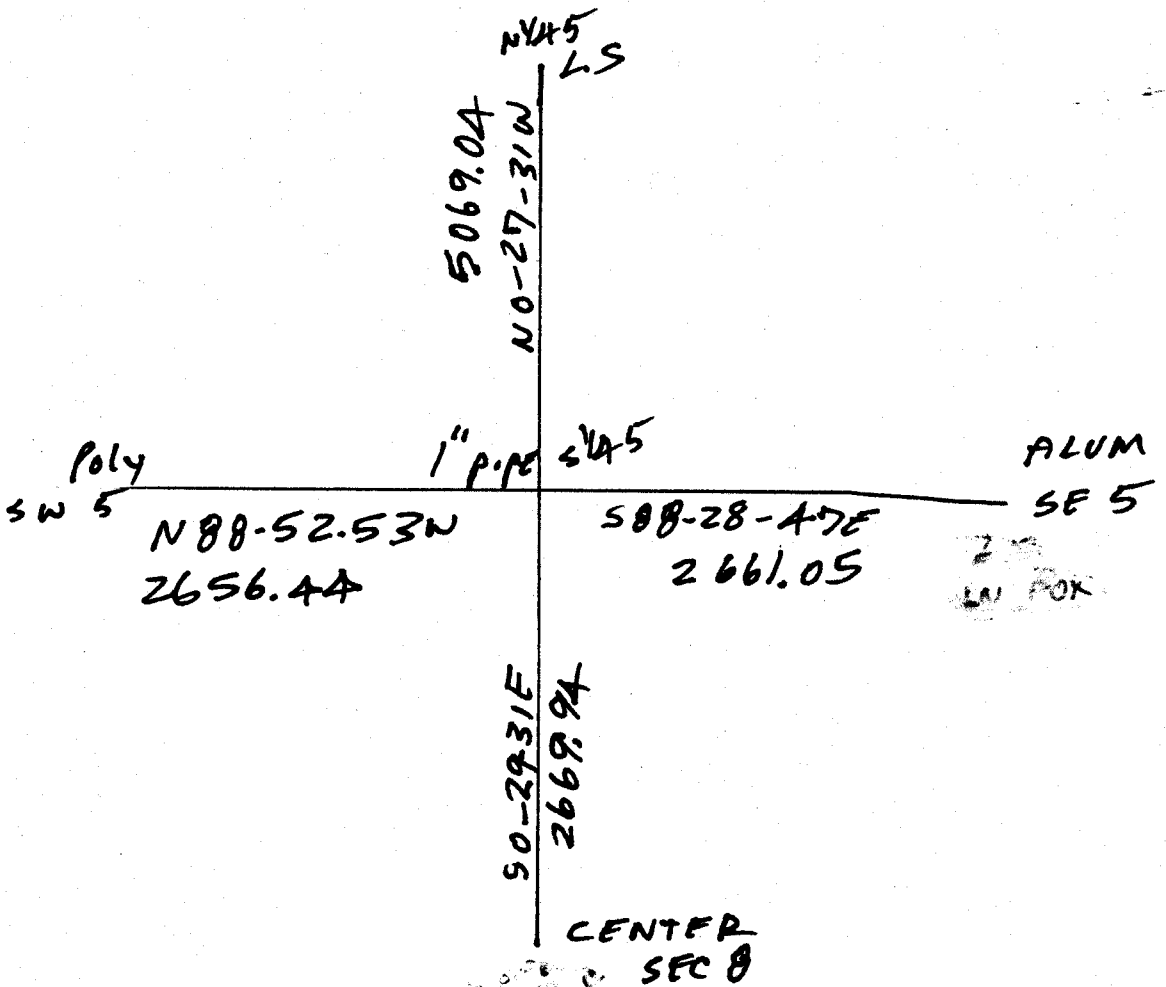
1 2 3 4 5 6 7 8 9 10 11 12 13 14 15 16 17 18 19 20 21 22 23 24 25  
PLACE MONUMENT SYMBOL  AT PROPER LOCATION ON ABOVE INDEX

CORNER MONUMENT

WITNESS MONUMENT

(a)

BEARINGS ARE BASED ON: \_\_\_\_\_



FIELD BOOK \_\_\_\_\_ PAGE # \_\_\_\_\_

SHEET 2 OF 2

SHOW A PLAN VIEW DRAWING DEPICTING THE CORNER MONUMENT AND SURROUNDING PHYSICAL FEATURES, INCLUDING THE EXCAVATION AREA AND DEPTH.

PLANNING & ZONING COMMITTEE ADOPTED THE ABOVE FORM ON 12/2/1982

CORNER CODE E-7

PL524

*C) Was the corner restored through acceptance of (1) an obliterated evidence location, or, (2) a found perpetuated location?*

**FD 1" PIPE 0.3' DEEP.**

*D) Describe any material discrepancy between the location of the corner as restored or reestablished and the location of that corner as previously restored or reestablished by distance and direction. Show the discrepancy on the plan view drawing under (a), above. Show the distances between the corner as previously restored or reestablished and (1) the corner as restored or reestablished, and (2) to at least 4 of the witness monuments shown on the drawing in (a), above.*

*(E) Was the corner reestablished through lost corner proportionate methods? If so, show the method, including the directions and distances to other public land survey corners used as evidence or used for proportioning the corner location.*

**I, Donald Barnes, hereby certify that the corner location as identified by the corner code index was determined by me under my direction and control and that this U.S. Public Land Survey Monument Record is correct and complete to the best of my knowledge and belief.**

Seal  
*Donald Barnes*

Emboss

*May 12, 2003*

SHEET 2 OF 2

CORNER CODE

**E-7**

**A.E. 7.08 REQUIREMENT**