

U.S. PUBLIC LAND SURVEY MONUMENT RECORD

For Public Land Survey Corners In:

WI ADMINISTRATIVE CODE A-E 7.08 REQUIREMENT

T. 2 N. R. 11 E.

CORNER CODE INDEX

1	2	3	4	5	6	7	8	9	10	11	12	13	14	15	16	17	18	19	20	21	22	23	24	25	
A																									A
B																									B
C																									C
D																									D
E																									E
F																									F
G																									G
H																									H
J																									J
K																									K
L																									L
M																									M
N																									N
O																									O
P																									P
Q																									Q
R																									R
S																									S
T																									T
U																									U
V																									V
W																									W
X																									X
Y																									Y
Z																									Z

PLYMOUTH TWP
ROCK COUNTY WI

IF AVAILABLE
ROCK COUNTY COORDINATES PREFERRED

North _____ Elev. _____

East _____

Hor. Datum _____ Vert. Datum _____

LATITUDE _____ ELLIPS. HT. _____

LONGITUDE _____

GPS (X) _____ TRAVERSE (X) _____

BASED ON THE FOLLOWING CONTROL:

1 2 3 4 5 6 7 8 9 10 11 12 13 14 15 16 17 18 19 20 21 22 23 24 25
PLACE MONUMENT SYMBOL AT PROPER
LOCATION ON ABOVE INDEX

CORNER MONUMENT

WITNESS MONUMENT

(a)

BEARINGS ARE BASED ON: _____

OBSERVATION SHEET 182 & 7700

FIELD BOOK _____ PAGE # _____

SHEET 1 OF 2

SHOW A PLAN VIEW DRAWING DEPICTING THE CORNER MONUMENT AND SURROUNDING
PHYSICAL FEATURES, INCLUDING THE EXCAVATION AREA AND DEPTH.

PLANNING & ZONING COMMITTEE ADOPTED THE ABOVE FORM ON 12/2/1982

CORNER CODE V-7

PL604

(B) Describe any record evidence, monument evidence, occupational evidence, testimonial evidence or any other material evidence you considered, and whether the monument was found or placed.

- 1833 HARRISON EAST ON RAND. BET 29 & 32
- 2640 TEMPY 1/4 P
2838 LEFT TIMBER & ENTERED PRAIRIE
5285.94 INT. E BDY 6.6' S OF P LAND WEST 1/2 ROLLING 2ND
RATE WITH RED & W.O TIMBER E 1/2 ROLLING 1ST
RATE PRAIRIE
COR. WEST
- 2642.97 QUARTER SEC COR. {BLK D 24 N26E 27.06' BLK
D. 12 S23E 26.4' BLK D 24 BLK D 12} MARKED
5285.94 SEC COR
- 1844 PEASE TWP RD RECORDS BK 1 PG 4 COMMENCING AT THE
CORNERS OF SEC 26,27,34 AND 35, IN T2N R11E AND
RUNNING WEST ON THE LINE BETWEEN SECTIONS 27 & 34,
2622.84'. SET POST WHERE OLD 1/4 POST ON SAID LINE
STOOD BURNT STUMP OF WHITE OAK BEARS N5W 13.86' AND
S88E 73.92'; THENCE WEST ON SAID LINE 2622.84' TO THE
CORNER OF SEC 27,28,33, & 34, SET POST WHITE OAK 24
INCHES IN DIA BEARS S35E 114.18', BURNT STUMP OF BASS
WOOD 24" N78E 86.46'; THENCE WEST ON LINE BETWEEN
SECS 28 AND 33 TO CORNER OF SEC 28,29,32 & 33 5224.5'
SETTING POST IN OLD MOUND; THENCE WEST ON LINE
BETWEEN SECTIONS 29 & 32, 2652.8' SET POST BY BLACK
OAK 24 INCH BEARS N26E 27.06'; THENCE WEST ON THE
LINE BEFORE SAID 2642.64' TO THE COR OF SEC 29,30,31 &
32, BLACK OAK BEARS N41E 78? AND N22W 97.02'; THENCE
WEST OF LINE BETWEEN SEC 30 & 31, 5297.16' TO THE LINE
BETWEEN RANGES 10 & 11 EAST 4 MILES AND 5.94'. SAID
RD EXTENDS 33' ON EACH SIDE OF THE ABOVE LINE.
- 1868 LOCKE PG 61 WEST BETWEEN SEC 29 AND 32 VAR 6-05
2659.8 INTERSECTED 1/4 LINE 4.62' SOUTH OF COR.
FOUND REMAINS OF NORTH BT AND LIMESTONE
ABOVE OLD STAKE IN CENTER OF HIGHWAY AND IN
LINE OF FENCE RUNNING NORTH VAR CORRECTED
6. CONTINUED WEST FROM 1/4 COR WITH VAR 6
- 2904 SET OFF 7.92' NORTH
3379.2 CENTER OF SLUICE BRIDGE
4026 SET OFF 6.27' NORTH
5016 SET OFF 8.58' NORTH
5314.98 INTERSECTED WEST BOUNDARY AT COR. FOUND
B.T.S IN SEC 31 AND 32 AND STUMP OF BT IN 29
AND STONE ON COR. COR IN CENTER OF HIGHWAY.
VAR CORRECTED 5-30
SEP 9 1868
- 1875 RUGER VOL 2 PG 193 STONE MON VAR 4-30 2651.88 TO NW
COR SEC 32 7 VAR 5-56 2642.64 TO DEN SEC 32
- 1958 BATTERMAN VOL 3 PG 528 FD 6X6X36 CUT STONE 1' DEEP.
REF SAME.
- 1975 LEE GSM VOL 5 PG 16 SET PIPE
1978 BARNES VOL 5 PG 428 FD PK LEE STATED HE SET PK
FROM TIES FOR GSM VOL 5 PG 16. SET ALUM & REF.
1978 BARNES VOL 5 PG 473 2661.77 TO NE COR SEC 32.
1993 KREBS MAP #09824 CUT STONE WEST 2654.41 TO NW COR
SEC 32, S1-37-33E 2647.06 TO DEN SEC 32, & S1-37-33E
5316.51 TO S 1/4 COR SEC 32
1997 SCHROEDER GSM VOL 20 PG 212 STATE NOTHING ABOUT
MON.

Donald Barnes
6-20-03

PL604

FD PK & REFERENCE TIES.

C) Was the corner restored through acceptance of (1) an obliterated evidence location, or, (2) a found perpetuated location?

ACCEPTED LOCATION AS INTERSECTED FROM FOUND REFERENCE MONUMENT. THE PK IS S87-00E 0.10' OF THE INTERSECTION POINT.

D) Describe any material discrepancy between the location of the corner as restored or reestablished and the location of that corner as previously restored or reestablished by distance and direction. Show the discrepancy on the plan view drawing under (a), above. Show the distances between the corner as previously restored or reestablished and (1) the corner as restored or reestablished, and (2) to at least 4 of the witness monuments shown on the drawing in (a), above.

(E) Was the corner reestablished through lost corner proportionate methods? If so, show the method, including the directions and distances to other public land survey corners used as evidence or used for proportioning the corner location.

I, Donald Barnes, hereby certify that the corner location as identified by the corner code index was determined by me under my direction and control and that this U.S. Public Land Survey Monument Record is correct and complete to the best of my knowledge and belief.

Seal
Donald Barnes

Emboss

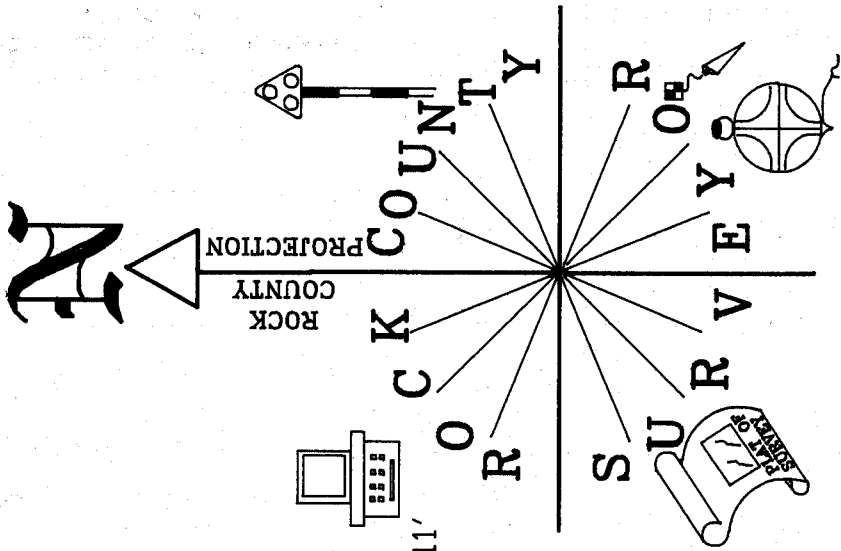
6-20-03

SHEET 2 OF 3

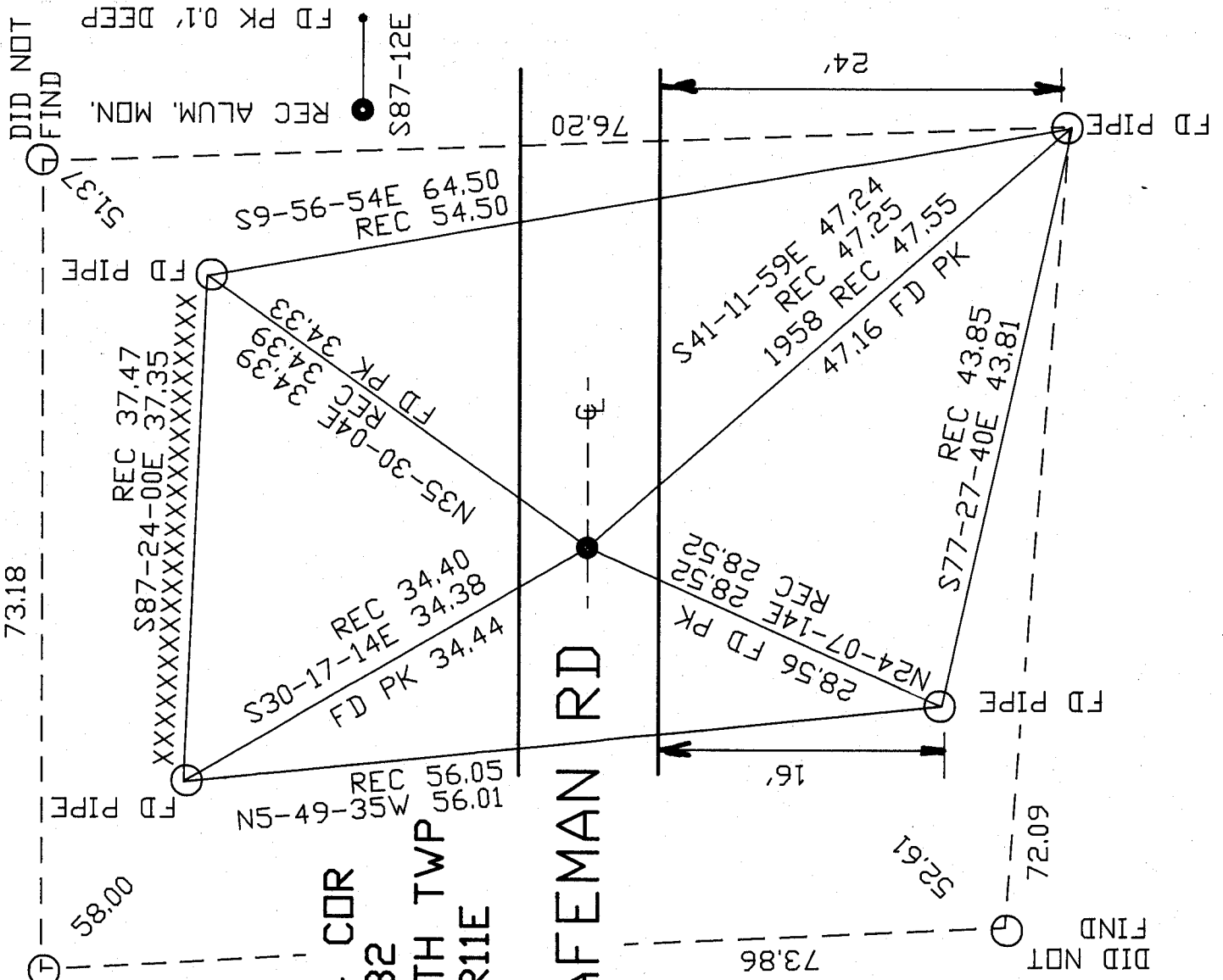
CORNER CODE

V-7

A.E. 7.08 REQUIREMENT



NOT TO SCALE
OBSERVATION SHEET #1604
VOL 3 PG 528
VOL 5 PG 428
FB #1 PG 11
UNLESS OTHERWISE STATED
REC DISTANCES ARE FROM 1978
VOL 5 PG 428



N 1/4 COR
SEC 32
PLYMOUTH TWP
T2N R11E

EMBOSSED SEAL
Ronald Barnes
6-20-03