

PUBLIC LAND SURVEY MONUMENT RECORD

For Public Land Survey Corners in the

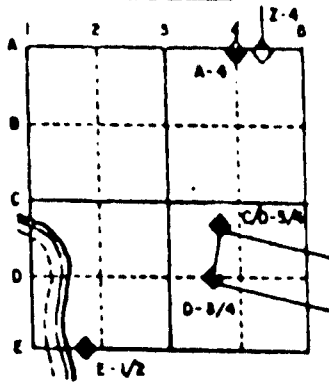
T. 2 N., R. 11 E.

CORNER CODE INDEX

	1	2	3	4	5	6	7	8	9	10	11	12	13	14	15	16	17	18	19	20	21	22	23	24	25
A																									
B																									
C																									
D																									
E																									
F																									
G																									
H																									
I																									
J																									
K																									
L																									
M																									
N																									
O																									
P																									
Q																									
R																									
S																									
T																									
U																									
V																									
W																									
X																									
Y																									
Z																									

PLACE MONUMENT SYMBOL (◈) AT PROPER LOCATION ON ABOVE INDEX

EXAMPLE



PLYMOUTH TWP
ROCK COUNTY WI

IF AVAILABLE
STATE PLANE COORDINATES

North (Y) _____ Eleve. (Z) _____
 East (X) _____ Zone _____
 Hor. Datum _____ Vert. Datum _____

◈ CORNER MONUMENT

○ WITNESS MONUMENT

BEARINGS ARE BASED ON:

(B) Describe any record evidence, monument evidence, occupational evidence, testimonial evidence or any other material evidence you considered, and whether the monument was found or placed.

1867 LOCKE VOL 1 PG 280 SET STAKE. CALLS FOR THE CORNER TO BE EQUAL DISTANCE BETWEEN THE EAST & WEST 1/4 CORNERS A DISTANCE OF 2664.02 TO BOTH THOSE QUARTER CORNERS & 2484.24 TO THE NORTH 1/4 CORNER SECTION 5.

1892 BLEEDORN VOL 2 PG 463 CALLS FOR 2619.54 TO SOUTH 1/4 CORNER OF SECTION 5.

1921 ELY MAP #6335 CALLS FOR N87-38W 2667.7 TO EAST 1/4 CORNER SECTION 5 & N0-08W 2451.53 (DIFFICULT TO READ DISTANCE) TO NORTH 1/4 CORNER SECTION 5

1966 BATTERMAN JR. VOL 4 PG 255 CALLS FOR 2668.7 TO EAST 1/4 CORNER SECTION 5, 2451.4 TO NORTH 1/4 CORNER SECTION 5, AN ANGLE OF 92-19 AT CENTER FROM NORTH 1/4 CORNER TO EAST 1/4 CORNERS OF SEC 5, & AN ANGLE OF 89-58-30 AT NORTH 1/4 CORNER SECTION 5 FROM NE TO CENTER OF SECTION 5. SHOWS MONUMENT BUT DOES NOT STATE THE TYPE OF MONUMENT.

FOUND CONCRETE MONUMENT WITH BRASS DISK. MONUMENT WILL FALL INTO THE DRAINAGE DITCH VERY SOON.

C) Was the corner restored through acceptance of (1) an obliterated evidence location, or, (2) a found perpetuated location?

DID NOT ACCEPT NOR REJECT MONUMENT. PERPETUATED MONUMENT LOCATION.

D) Describe any material discrepancy between the location of the corner as restored or reestablished and the location of that corner as previously restored or reestablished by distance and direction. Show the discrepancy on the plan view drawing under (a), above. Show the distances between the corner as previously restored or reestablished and (1) the corner as restored or reestablished, and (2) to at least 4 of the witness monuments shown on the drawing in (a), above.

(E) Was the corner reestablished through lost corner proportionate methods? If so, show the method, including the directions and distances to other public land survey corners used as evidence or used for proportioning the corner location.

NO

I, Donald Barnes, hereby certify that the corner points as identified by the corner code index were, in a field survey on, March 23, 1995, established, re-established, monumented, re-monumented, recovered or restored as expressed below and in conformance with the regulations and rules as required in the current manual of survey instructions of the United States Department of Interior, Bureau of Land Management.

seal

Donald Barnes
4/10/95

EMBOSS LAND SURVEYOR SEAL

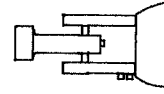
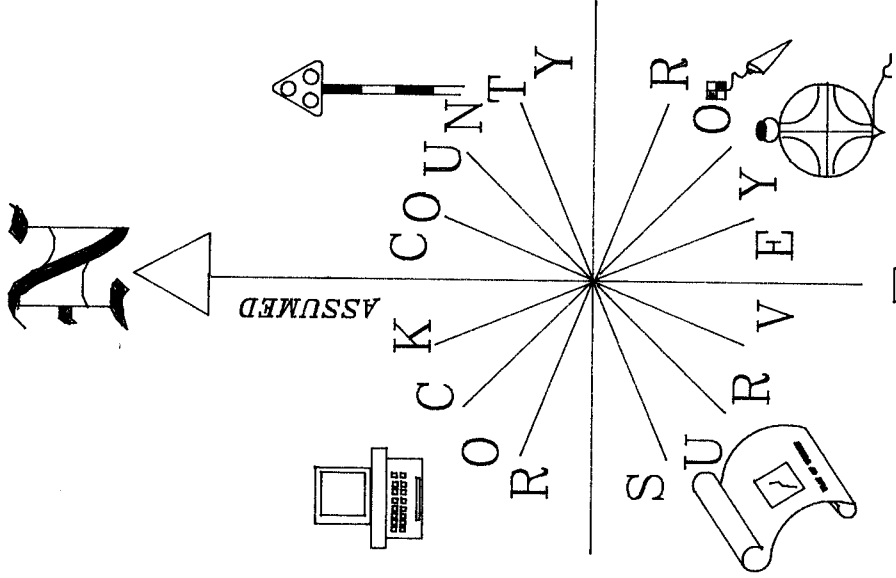
COUNTY SURVEYOR FILING DATA

Date of computer entry _____

Date microfilmed _____

Number of included sheets 1
CORNER CODE _____

C 7



FB #1 PG 69
 FULTON TWP FIELD BOOK
 CENTER SEC 5

FOUND CONCRETE MON. WITH BRASS DISK ON TOP. LEANING TO THE NORTH ABOUT .05 TO .10' NORTH OF THE CENTER OF A PLUMB LINE. MEASUREMENTS ARE TO THE BRASS DISK AS IT EXISTS.

○ 3/4X24 REROD WITH PLASTIC CAP

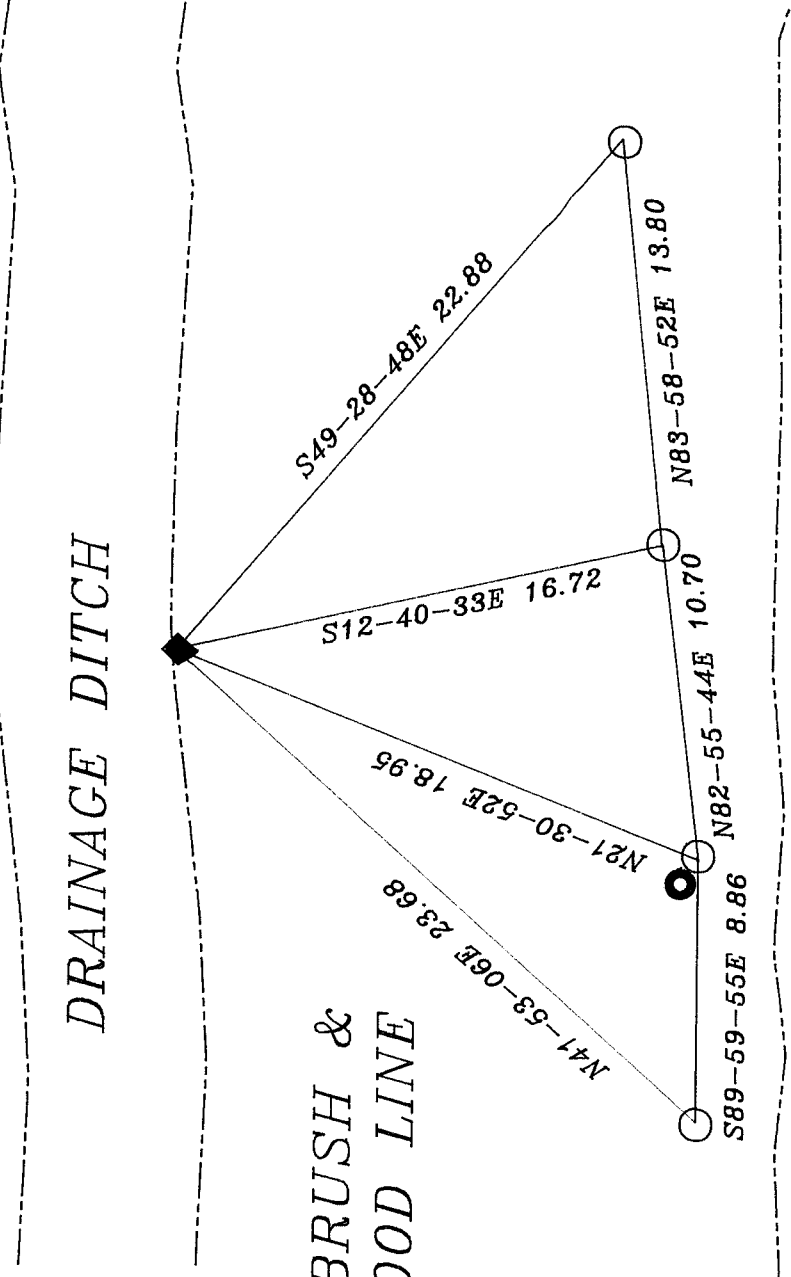
● 4' TALL CARSONITE POST

FARM FIELD

DRAINAGE DITCH

BRUSH & WOOD LINE

FARM FIELD



Donald Barnes
 4/10/95