

# U.S. PUBLIC LAND SURVEY MONUMENT RECORD

For Public Land Survey Corners in:

WI ADMINISTRATIVE CODE A-E 7.08 REQUIREMENT

T. 1 N., R. 14 E

CORNER CODE INDEX

A	1	2	3	4	5	6	7	8	9	10	11	12	13	14	15	16	17	18	19	20	21	22	23	24	25
B																									
C	6																								
D		5																							
E			A																						
F				3																					
G					2																				
H						1																			
I	1																								
J		8																							
K			9																						
L				10																					
M					11																				
N						12																			
O	13																								
P		17																							
Q			16																						
R				15																					
S					14																				
T						13																			
U	18																								
V		17																							
W			16																						
X				15																					
Y					14																				
Z						13																			
							12																		
								11																	
									10																
										9															
											8														
												7													
													6												
														5											
															4										
																3									
																	2								
																		1							

CLINTON TWP

ROCK COUNTY WI

IF AVAILABLE  
ROCK COUNTY COORDINATES PREFERRED

North \_\_\_\_\_ Elev. \_\_\_\_\_

East \_\_\_\_\_

Hor. Datum \_\_\_\_\_ Vert. Datum \_\_\_\_\_

LATITUDE \_\_\_\_\_ ELLIPS. HT. \_\_\_\_\_

LONGITUDE \_\_\_\_\_

GPS (X) \_\_\_\_\_ TRAVERSE (X) \_\_\_\_\_

BASED ON THE FOLLOWING CONTROL:

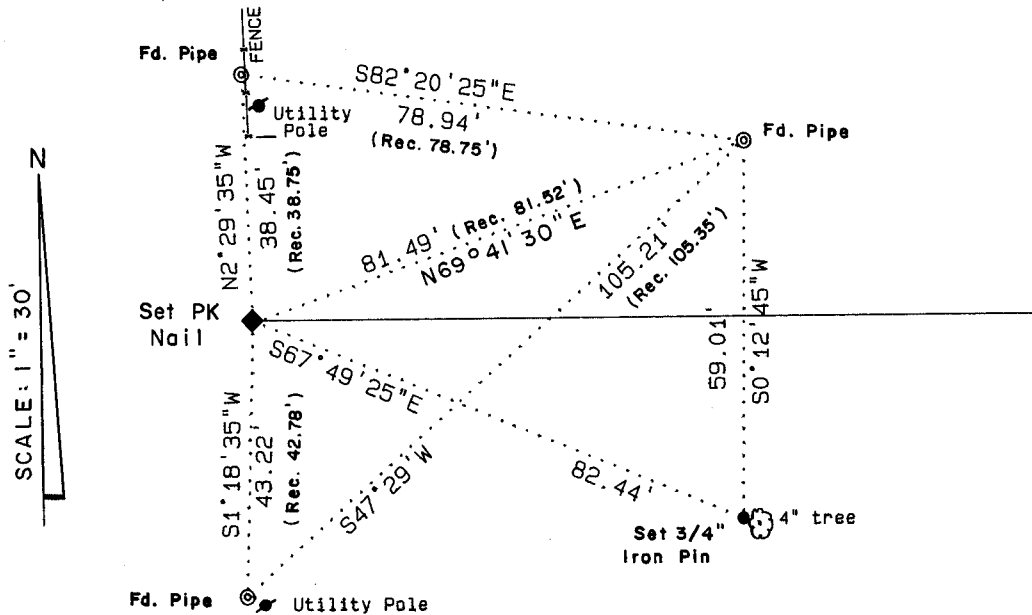
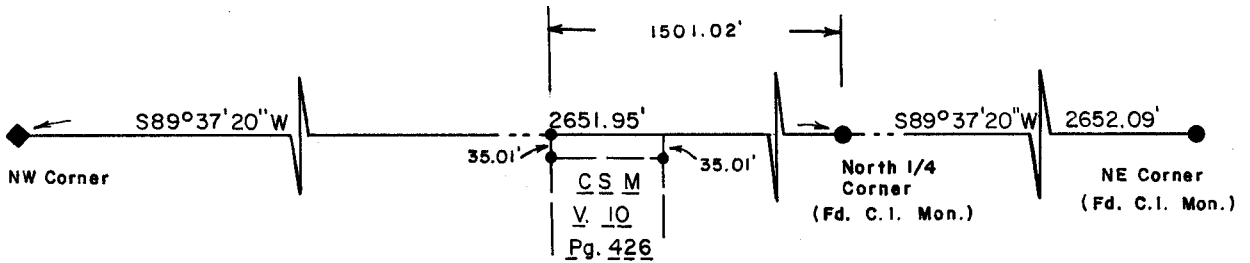
PLACE MONUMENT SYMBOL  $\blacklozenge$  AT PROPER LOCATION ON ABOVE INDEX

$\blacklozenge$  CORNER MONUMENT

$\circ$  WITNESS MONUMENT

(a)

BEARINGS ARE BASED ON: Assumed Basis



Reference H.L.C. & A., Inc. # 95-465

FIELD BOOK \_\_\_\_\_ PAGE # \_\_\_\_\_

SHEET 1 OF 2

SHOW A PLAN VIEW DRAWING DEPICTING THE CORNER MONUMENT AND SURROUNDING PHYSICAL FEATURES, INCLUDING THE EXCAVATION AREA AND DEPTH.

PLANNING & ZONING COMMITTEE ADOPTED THE ABOVE FORM ON 12/2/1982

CORNER CODE R - 17

(OVER)

(B) Describe any record evidence, monument evidence, occupational evidence, testimonial evidence or any other material evidence you considered, and whether the monument was found or placed.

Set P.K. Nail on straight line extension of NE Corner and North 1/4 Corner using previously measured distance of 2651.95 feet. This line was in harmony with C.S.M. Volume 10, Pages 426 and 427.

C) Was the corner restored through acceptance of (1) an obliterated evidence location, or, (2) a found perpetuated location?

Obliterated Evidence

D) Describe any material discrepancy between the location of the corner as restored or reestablished and the location of that corner as previously restored or reestablished by distance and direction. Show the discrepancy on the plan view drawing under (a), above. Show the distances between the corner as previously restored or reestablished and (1) the corner as restored or reestablished, and (2) to at least 4 of the witness monuments shown on the drawing in (a), above.

See Sheet 1

(E) Was the corner reestablished through lost corner proportionate methods? If so, show the method, including the directions and distances to other public land survey corners used as evidence or used for proportioning the corner location.

I, Steven Lathrop, hereby certify that the corner location as identified by the corner code index was determined by me under by direction and control and that this U.S. Public Land Survey Monument Record is correct and complete to the best of my knowledge and belief.



Steven Lathrop 4-8-96

Number of included sheets 2

CORNER CODE

A-E 7.08 REQUIREMENT