

U.S. PUBLIC LAND SURVEY MONUMENT RECORD

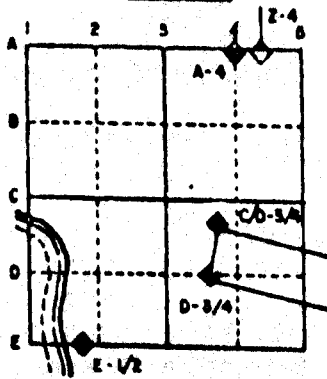
For Public Land Survey Corners in the
T. 2 N., R. 11 E.

CORNER CODE INDEX

	1	2	3	4	5	6	7	8	9	10	11	12	13	14	15	16	17	18	19	20	21	22	23	24	25
A																									
B																									
C																									
D																									
E																									
F																									
G																									
H																									
I																									
J																									
K																									
L																									
M																									
N																									
O																									
P																									
Q																									
R																									
S																									
T																									
U																									
V																									
W																									
X																									
Y																									
Z																									

PLACE MONUMENT SYMBOL (◆) AT PROPER LOCATION ON ABOVE INDEX

EXAMPLE



PLYMOUTH TWP
ROCK COUNTY WI

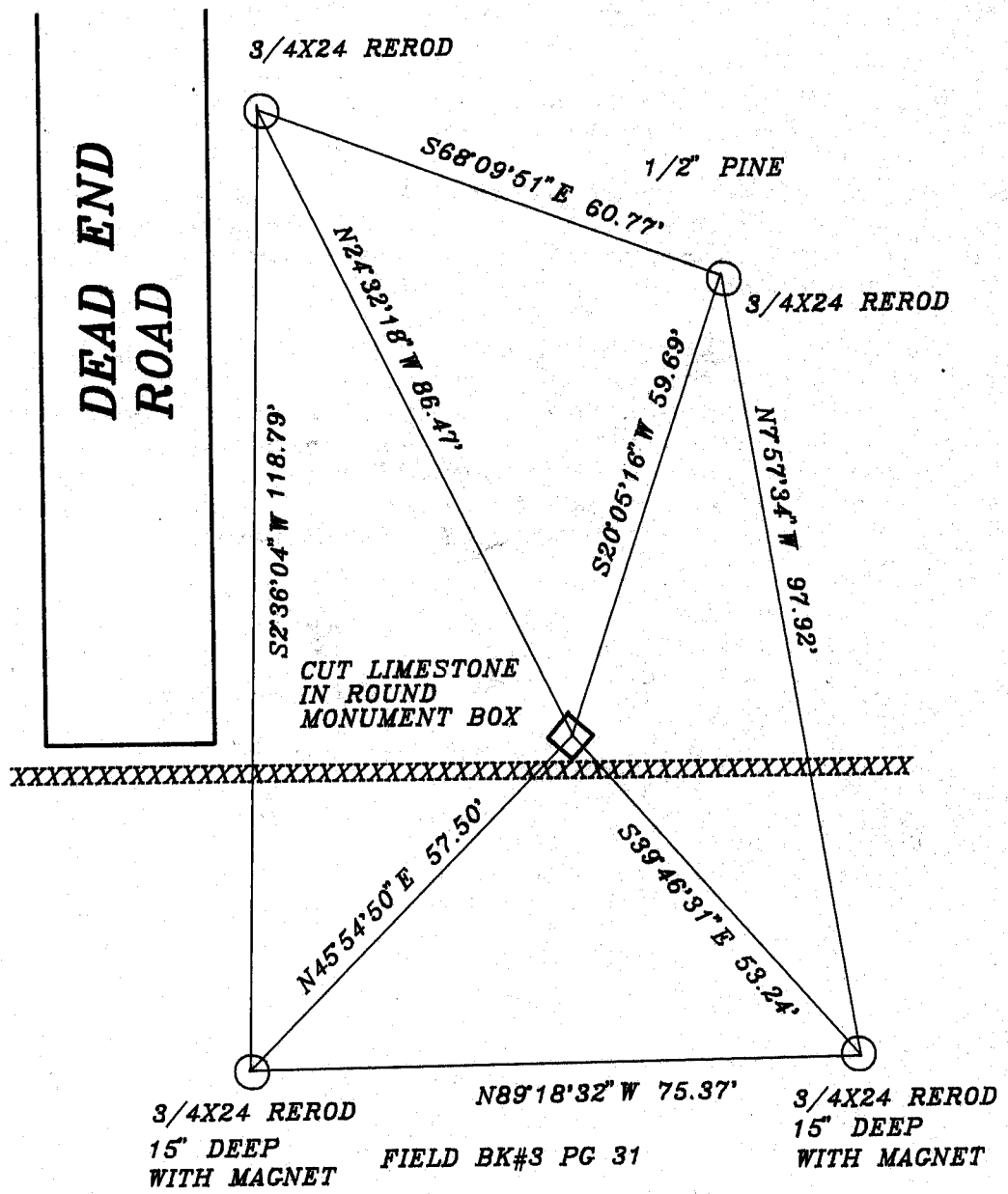
IF AVAILABLE
STATE PLANE COORDINATES

North (Y) _____ Eleve. (Z) _____
 East (X) _____ Zone _____
 Hor. Datum _____ Vert. Datum _____

◆ CORNER MONUMENT

○ WITNESS MONUMENT

BEARINGS ARE BASED ON: ASSUMED



MICROFILMED

SHEET ___ OF ___

CORNER CODE: A 7

(B) Describe any record evidence, monument evidence, occupational evidence, testimonial evidence or any other material evidence you considered, and whether the monument was found or placed.

1867 LOCKE VOL 1 PG 280 FOUND STAKE. USED TO SUBDIVIDE SECTION 5. SHOWS 2484.24 TO CENTER OF SECTION 5.

1868 LOCKE REMONUMENTATION WEST ON NORTH LINE OF SECTION 5. AT 2699.4 INTERSECTED 1/4 LINE FOR TOWN 3 20.79 SOUTH OF CORNER. FOUND STAKE SET BY SELF. AT 2679.6 FROM NE CORNER OF SECTION 5 SET 1/4 CORNER FOR TOWN 2 N 19.8 EAST OF CORNER FOR T3N. 19.8 BEING 1/3 OF THE JOG AT SECTION CORNERS. 3.96 NORTH OF FENCE. CALLS FOR 2611.62 TO NW CORNER OF SECTION 5.

1913 VOL 6 PG 386 CALLS FOR 2681.8 TO NE CORNER OF SECTION 5.

1920 BATTERMAN VOL 3 PG 102 CALLS FOR A 6X6 STONE.

1966 BATTERMAN JR. VOL 4 PG 255 CUT STONE IN MONUMENT BOX. CALLS FOR 2680.76 TO NE CORNER OF SECTION 5, 2451.4 TO CENTER OF SECTION 5, AND AN ANGLE OF 89-58-30 FROM THE NE CORNER TO CENTER OF SECTION 5.

1979 BARNES VOL 6 PG 386 CALLS 2680.82 TO THE NE CORNER OF SECTION 5.

FOUND CUT LIMESTONE IN ROUND MONUMENT BOX.

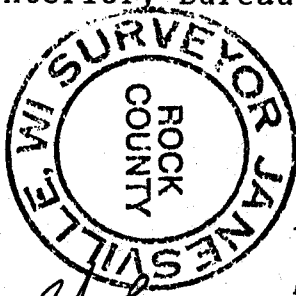
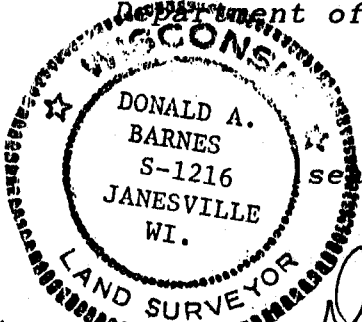
C) Was the corner restored through acceptance of (1) an obliterated evidence location, or, (2) a found perpetuated location?

ACCEPTED FOUND MONUMENT.

D) Describe any material discrepancy between the location of the corner as restored or reestablished and the location of that corner as previously restored or reestablished by distance and direction. Show the discrepancy on the plan view drawing under (a), above. Show the distances between the corner as previously restored or reestablished and (1) the corner as restored or reestablished, and (2) to at least 4 of the witness monuments shown on the drawing in (a), above.

(E) Was the corner reestablished through lost corner proportionate methods? If so, show the method, including the directions and distances to other public land survey corners used as evidence or used for proportioning the corner location.

I, Donald Barnes, hereby certify that the corner points as identified by the corner code index were, in a field survey on, OCTOBER 9, 1991, established, re-established, monumented, re-monumented, recovered or restored as expressed below and in conformance with the regulations and rules as required in the current manual of survey instructions of the United States Department of Interior, Bureau of Land Management.



COUNTY SURVEYOR FILING DATA

Date of computer entry _____

Date microfilmed _____

Number of included sheets _____
CORNER CODE

No. JA, 1991 AFFIX YOUR LAND SURVEYOR SEAL