

# U.S. PUBLIC LAND SURVEY MONUMENT RECORD

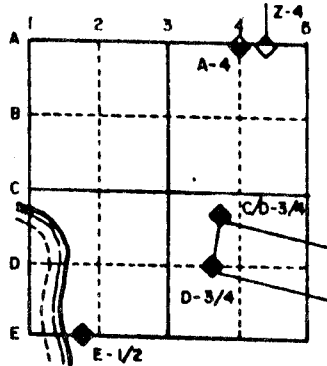
For Public Land Survey Corners in the  
T. 1 N., R. 14 E.

## CORNER CODE INDEX

	1	2	3	4	5	6	7	8	9	10	11	12	13	14	15	16	17	18	19	20	21	22	23	24	25	
A																										
B																										
C		6																								
D																										
E																										
F																										
G																										
H		7																								
I																										
J																										
K																										
L																										
M		18																								
N																										
O																										
P																										
Q		19																								
R																										
S																										
T																										
U		30																								
V																										
W																										
X																										
Y		31																								
Z																										

PLACE MONUMENT SYMBOL (◆) AT PROPER LOCATION ON ABOVE INDEX

### EXAMPLE



CLINTON TWP  
ROCK COUNTY WI

IF AVAILABLE  
STATE PLANE COORDINATES

North (Y) \_\_\_\_\_ Eleve. (Z) \_\_\_\_\_  
East (X) \_\_\_\_\_ Zone \_\_\_\_\_  
Hor. Datum \_\_\_\_\_ Vert. Datum \_\_\_\_\_

(a.)

◆ CORNER MONUMENT

○ WITNESS MONUMENT

BEARINGS ARE BASED ON:

FIELD BOOK \_\_\_\_\_ PAGE # \_\_\_\_\_

MICROFILMED

SHOW A PLAN VIEW DRAWING DEPICTING THE CORNER MONUMENT AND SURROUNDING PHYSICAL FEATURES, INCLUDING THE EXCAVATION AREA AND DEPTH. THE CORNER MONUMENT SHALL HAVE THE FOLLOWING CHARACTERISTICS: 1) HAVE AT LEAST TWO PREDETERMINED BREAK-OFF POINTS. 2) IF BROKEN, LEAVE A PERMANENTLY MAGNETIZED REMNANT AT THE ORIGINAL POINT. 3) MUST BE EXTENDABLE. 4) THE CAP IS INSCRIBED: ROCK COUNTY SURVEY MONUMENT - PENALTY FOR DISTURBING MARKER. 5) OR AN EXISTING CUT LIMESTONE. AN IRON PIPE 1 1/2" x 4'0" (MINIMUM) MAY BE USED IN AREAS WHERE GROUND WATER IS WITHIN ONE FOOT OF THE SURFACE. IF THE CORNER IS OCCUPIED BY AN IMPROVEMENT (MANHOLE, BURIED CABLE, ETC.) ANY DURABLE, DISTINCT MONUMENT MAY BE USED. CORNERS SHALL BE REFERENCED WITH AT LEAST 4 DURABLE WITNESS MONUMENTS. WITNESS MONUMENTS SHALL BE MADE OF CONCRETE, NATURAL STONE, IRON OR OTHER EQUALLY DURABLE MATERIAL, EXCEPT WOOD. DESCRIBE THE CORNER AND THE WITNESS MONUMENTS.

CORNER CODE:

28

# "MONUMENT RECORD"

OF

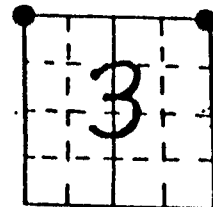
LAND SURVEY MONUMENTS SITUATED IN SECTION 2, TOWNSHIP 46,  
RANGE 3, OF THE 3rd PRINCIPAL MERIDIAN, Boone  
COUNTY, ILLINOIS.

MONUMENT DESCRIPTION AND REMARKS: Set railroad spike at Northwest corner  
and concrete monument at Northeast corner. Concrete reference  
markers were set in accordance with Exhibit 1-04-7A and 1-04-7B of the  
I.D.O.T. land acquisition policies and procedures.

## RECOVERY TIE DRAWING

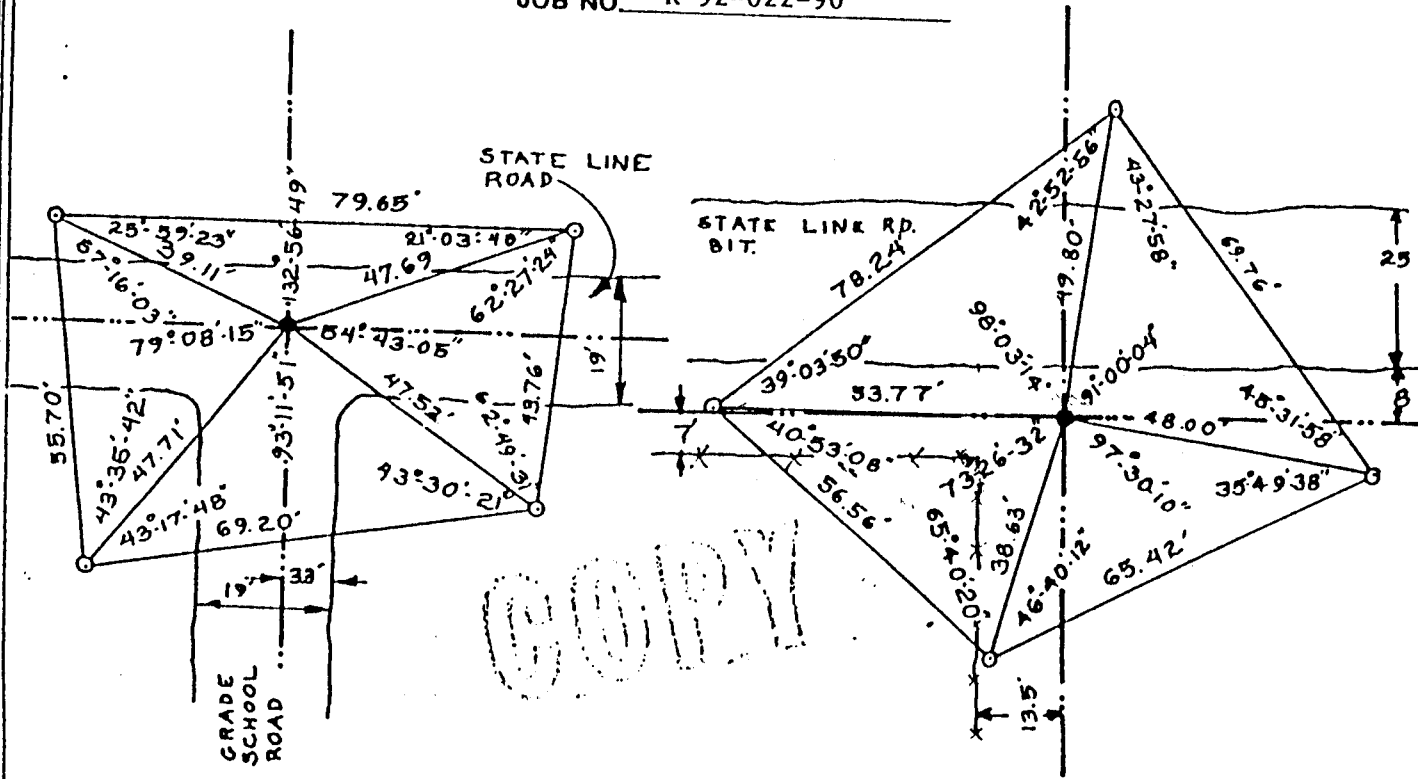


Illinois Department of Transportation  
*Division of Highways*



NORTH  
(NOT TO SCALE)

ROUTE F.A. Route 754  
SECTION K-RS-2  
JOB NO. R-92-022-90



● DENOTES NW. 1/4 CORNER  
○ DENOTES REFERENCE MARKER

● DENOTES NE. 1/4 CORNER  
○ DENOTES REFERENCE MARKER

STATE OF ILLINOIS  
COUNTY OF WINNEBAGO SS

I, Brian M. Carlson, HEREBY  
CERTIFY THAT THIS DOCUMENT WAS PREPARED  
UNDER MY DIRECTION IN ACCORDANCE WITH  
THE PUBLIC ACT 79-649 AND THE ABOVE  
DATA IS GIVEN UNDER MY HAND AND SEAL  
THIS 14th DAY OF August, 1990 A.D.

Brian M. Carlson  
ILLINOIS REGISTERED LAND SURVEYOR NO. 2913

OR  
UNITED STATES GOVERNMENT AGENCY

ARNOLD LUNDGREN & ASSOCIATES, INC.  
PROFESSIONAL ENGINEERS  
1834 POLK STREET  
ROCKFORD, ILL. 61101  
AREA CODE 815  
TELEPHONE 946-2881  
BY E.F.P. DATE 8-14-90  
APPROVED BY B.M.C. ORDER NO. 19408

SPACE RESERVED FOR  
RECORDING OFFICER  
INDEX CODE \_\_\_\_\_

Document No. 20-339 filed for Recorder's Office  
Boone County, Illinois 20/90 at 2:35 clock P.M.  
Angela M. Schmalzer Recorder of Deeds

78