

U.S. PUBLIC LAND SURVEY MONUMENT RECORD

For Public Land Survey Corners In: **WI ADMINISTRATIVE CODE A-E 7.08 REQUIREMENT**

T. 1 N. - R. 14 E. of the 4th P.M.

CORNER CODE INDEX

CLINTON TWP

ROCK COUNTY WI

(PLACE "◆" SYMBOL AT PROPER PLSS CORNER LOCATION)

	1	2	3	4	5	6	7	8	9	10	11	12	13	14	15	16	17	18	19	20	21	22	23	24	25		
A																											A
B																											B
C																											C
D																											D
E																											E
F																											F
G																											G
H																											H
J																											J
K																											K
L																											L
M																											M
N																											N
O																											O
P																											P
Q																											Q
R																											R
S																											S
T																											T
U																											U
V																											V
W																											W
X																											X
Y																											Y
Z																											Z
	1	2	3	4	5	6	7	8	9	10	11	12	13	14	15	16	17	18	19	20	21	22	23	24	25		

COORDINATES

(GNSS DERIVED VIA WISCORS)

NORTHING: 213493.424

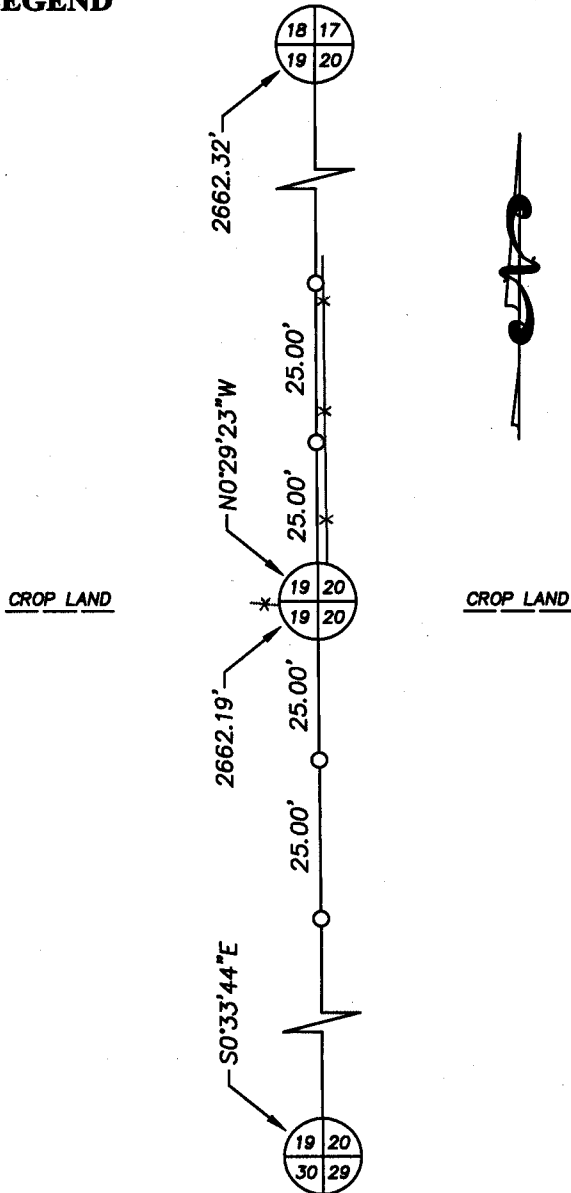
EASTING: 533159.951

ELEV: 973.85

Hor. Datum: WCCS-ROCK, (NAD83 2011)

Vertical Datum: NAVD 88

(a) LEGEND



SCALE: 1" = 100'

GRAPHIC BAR SCALE:



LEGEND:

- Cast Aluminum monument found.
- 3/4" X 24" solid round iron rod set, weighing 1.50 lbs per lineal ft.
- Existing fence line.



January 14th, 2014

PREPARED FOR:

American Transmission Company
c/o Patrick Cowell
5303 Fen. Oak Drive
Madison, WI 53718-8810
(608) 877-7130

HASSE
SURVEYING
W5820 ILIFF ROAD
MONROE, WI 53586
(608) 325-5321 PHONE
(608) 329-5321 FAX

U.S. PUBLIC LAND SURVEY MONUMENT RECORD

- (B) Describe any record evidence, monument evidence, occupational evidence, testimonial evidence or any other material evidence you considered, and whether the monument was found or placed.

This monument location was previously established by Rock County Surveyor Donald Barnes on 11-30-1980, as shown on County Surveyor Records Volume 6, Page 82. I found a Berntsen Cast Aluminum monument slightly leaning to the South & East. I uprighted the monument to a plumb position and accepted this as being the section corner location. This corner location is located 1.68' West of a straight line from the SW corner to the NW corner of Section 20. The monument is flush with the existing ground, field stones in the area were placed around the corner location for protection and I set (4) new witness monuments as shown on the respective section lines to the North and the South.

- (C) Was the corner restored through acceptance of (1) an obliterated evidence location, or, (2) a found perpetuated location?

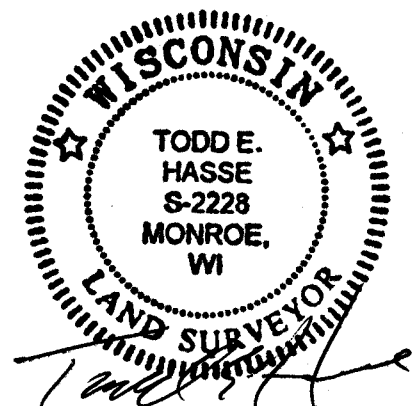
This monument location was a found perpetuated location.

- (D) Describe any material discrepancy between the location of the corner as restored or reestablished and the location of that corner as previously restored or reestablished by distance and direction. Show the discrepancy on the plan view drawing under (a), above. Show the distances between the corner as previously restored or reestablished an (1) the corner as restored or reestablished, and (2) to at least 4 of the witness monuments shown on the drawing in (a) above.

- (E) Was the corner reestablished through lost corner proportionate methods? If so, show the method, including the directions and distances to other public land survey corners used as evidence or used for proportioning the corner location.

W 1/4 corner to E 1/4 corner S88°05'55"E, 5294.50'

I, Todd E. Hasse, hereby certify that this corner location as identified by the corner code index, was determined by me and under my direction and control and that this U.S. Public Land Survey Monument Record is correct and complete to the best of my knowledge and belief.



January 14th, 2014