

U.S. PUBLIC LAND SURVEY MONUMENT RECORD

For Public Land Survey Corners in the

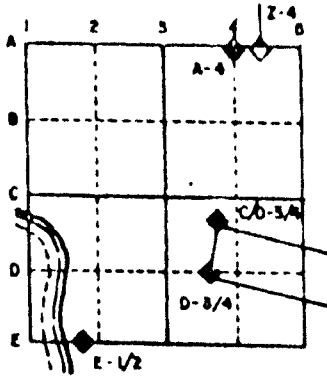
T. 3 N., R. 10 E.

CORNER CODE INDEX

	1	2	3	4	5	6	7	8	9	10	11	12	13	14	15	16	17	18	19	20	21	22	23	24	25
A																									
U																									
C	6		5	◆	4					3					2										
D																									
E																									
F																									
G	7		8		9					10					11										
H																									
J																									
K																									
L	16		17		18					19					14										
M																									
N																									
O																									
P	19		20		21					22					23										
Q																									
R																									
S																									
T	30		29		28					27					26										
U																									
V																									
W																									
X																									
Y																									
Z																									

PLACE MONUMENT SYMBOL (◆) AT PROPER LOCATION ON ABOVE INDEX

EXAMPLE

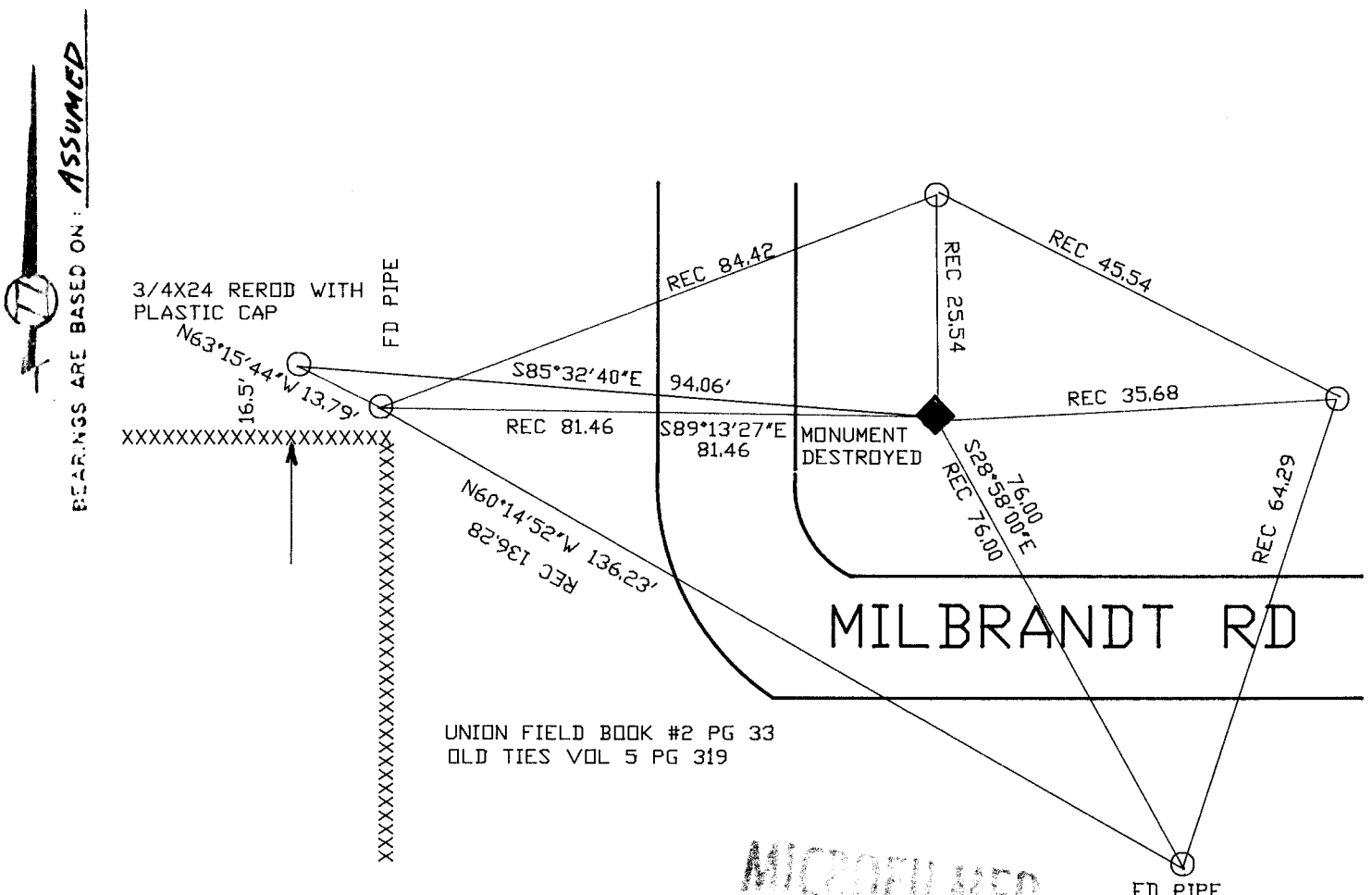


MAGNOLIA TWP
ROCK COUNTY WI

IF AVAILABLE
STATE PLANE COORDINATES

North (Y) _____ Eleve. (Z) _____
 East (X) _____ Zone _____
 Hor. Datum _____ Vert. Datum _____

◆ CORNER MONUMENT ○ WITNESS MONUMENT



MICROFILMED

SHEET _____ OF _____

CORNER CODE: C9

(B) Describe any record evidence, monument evidence, occupational evidence, testimonial evidence or any other material evidence you considered, and whether the monument was found or placed.

1863 LOCKE VOL 1 PG 183 FOUND OLD STAKE AND BEARING TREES. 2212.98 TO NE CORNER OF SECTION 5 AND 1574.76 TO 15X8X8 HH THAT IS TO THE WEST AND ON THE E/W CENTER LINE OF SECTION 5. 2657.19 TO THE CENTER OF SECTION 5.

1887 LEE VOL 2 PG 391 FOUND STUMP OF NW BT AND REMAINS OF OLD STAKE AT CORNER. 2664.42 TO THE SE CORNER OF SECTION 5.

1896 BLEEDORN VOL 2 PG 139 FOUND STAKE AND STUMP OF NW BT SET LIMESTONE 16.5X7X2 AND HH ON IT. 2666.4 TO CENTER OF SECTION 5 AND 1333.2 TO THE S 1/16TH CORNER OF THE NE 1/4 OF SECTION 5.

1977 BARNES VOL 5 PG 319 FOUND 17X7X2 LIMESTONE IN HORIZONTAL POSITION. OCCUPATION TO THE WEST AND NORTH AGREED WITH RECORD DISTANCE. PLACED ALUM. MONUMENT.

FOUND SOUTH EAST AND WEST REFERENCE TIE. MONUMENT WAS REMOVED.

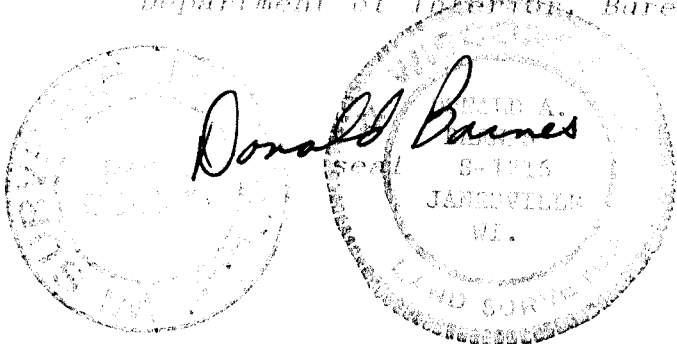
(C) Was the corner restored through acceptance of (1) an obliterated evidence location, or, (2) a found perpetuated location?

ACCEPTED OBLITERATED EVIDENCE LOCATION.

(D) Describe any material discrepancy between the location of the corner as restored or reestablished and the location of that corner as previously restored or reestablished by distance and direction. Show the discrepancy on the plan view drawing under (a), above. Show the distances between the corner as previously restored or reestablished and (1) the corner as restored or reestablished, and (2) to at least 3 of the witness monuments shown on the drawing in (a), above.

(E) Was the corner reestablished through lost corner proportionate methods? If so, show the method, including the directions and distances to other public land survey corners used as evidence or used for proportioning the corner location.

I, Donald Barnes, hereby certify that the corner points as identified by the corner code index were, in a field survey on, July 30 1991, established, re-established, monumented, re-monumented, recovered or restored as expressed below and in conformance with the regulations and rules as required in the current manual of survey instructions of the United States Department of Interior, Bureau of Land Management.



AFFIX YOUR LAND SURVEYOR SEAL

COUNTY SURVEYOR FILING DATA

Date of computer entry _____

Date microfilmed _____

Number of included sheets _____
CORNER CODE

C 9