

U.S. PUBLIC LAND SURVEY MONUMENT RECORD

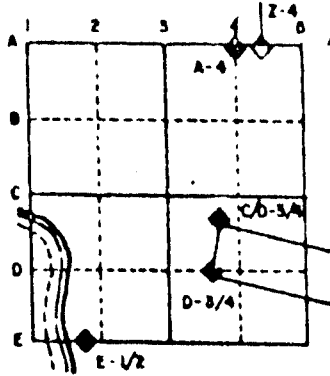
For Public Land Survey Corners in the
T. 3 N., R. 10 E.

CORNER CODE INDEX

| | | | | | | | | | | | | | | | | | | | | | | | | | | |
|---|---|---|---|---|----|----|----|----|----|----|----|----|----|----|----|----|----|----|----|----|----|----|----|----|----|----|
| | 1 | 2 | 3 | 4 | 5 | 6 | 7 | 8 | 9 | 10 | 11 | 12 | 13 | 14 | 15 | 16 | 17 | 18 | 19 | 20 | 21 | 22 | 23 | 24 | 25 | |
| A | | | | | | | | | | | | | | | | | | | | | | | | | | |
| B | | | | | | | | | | | | | | | | | | | | | | | | | | |
| C | 6 | | | | | | | | | | | | | | | | | | | | | | | | | |
| D | | 7 | | | | | | | | | | | | | | | | | | | | | | | | |
| E | | | 8 | | | | | | | | | | | | | | | | | | | | | | | |
| F | | | | 9 | | | | | | | | | | | | | | | | | | | | | | |
| G | | | | | 10 | | | | | | | | | | | | | | | | | | | | | |
| H | | | | | | 11 | | | | | | | | | | | | | | | | | | | | |
| I | | | | | | | 12 | | | | | | | | | | | | | | | | | | | |
| J | | | | | | | | 13 | | | | | | | | | | | | | | | | | | |
| K | | | | | | | | | 14 | | | | | | | | | | | | | | | | | |
| L | | | | | | | | | | 15 | | | | | | | | | | | | | | | | |
| M | | | | | | | | | | | 16 | | | | | | | | | | | | | | | |
| N | | | | | | | | | | | | 17 | | | | | | | | | | | | | | |
| O | | | | | | | | | | | | | 18 | | | | | | | | | | | | | |
| P | | | | | | | | | | | | | | 19 | | | | | | | | | | | | |
| Q | | | | | | | | | | | | | | | 20 | | | | | | | | | | | |
| R | | | | | | | | | | | | | | | | 21 | | | | | | | | | | |
| S | | | | | | | | | | | | | | | | | 22 | | | | | | | | | |
| T | | | | | | | | | | | | | | | | | | 23 | | | | | | | | |
| U | | | | | | | | | | | | | | | | | | | 24 | | | | | | | |
| V | | | | | | | | | | | | | | | | | | | | | 25 | | | | | |
| W | | | | | | | | | | | | | | | | | | | | | | 26 | | | | |
| X | | | | | | | | | | | | | | | | | | | | | | | 27 | | | |
| Y | | | | | | | | | | | | | | | | | | | | | | | | 28 | | |
| Z | | | | | | | | | | | | | | | | | | | | | | | | | 29 | |
| | | | | | | | | | | | | | | | | | | | | | | | | | | 30 |
| | | | | | | | | | | | | | | | | | | | | | | | | | | 31 |
| | | | | | | | | | | | | | | | | | | | | | | | | | | 32 |
| | | | | | | | | | | | | | | | | | | | | | | | | | | 33 |
| | | | | | | | | | | | | | | | | | | | | | | | | | | 34 |
| | | | | | | | | | | | | | | | | | | | | | | | | | | 35 |
| | | | | | | | | | | | | | | | | | | | | | | | | | | 36 |

PLACE MONUMENT SYMBOL (◐) AT PROPER
LOCATION ON ABOVE INDEX

EXAMPLE



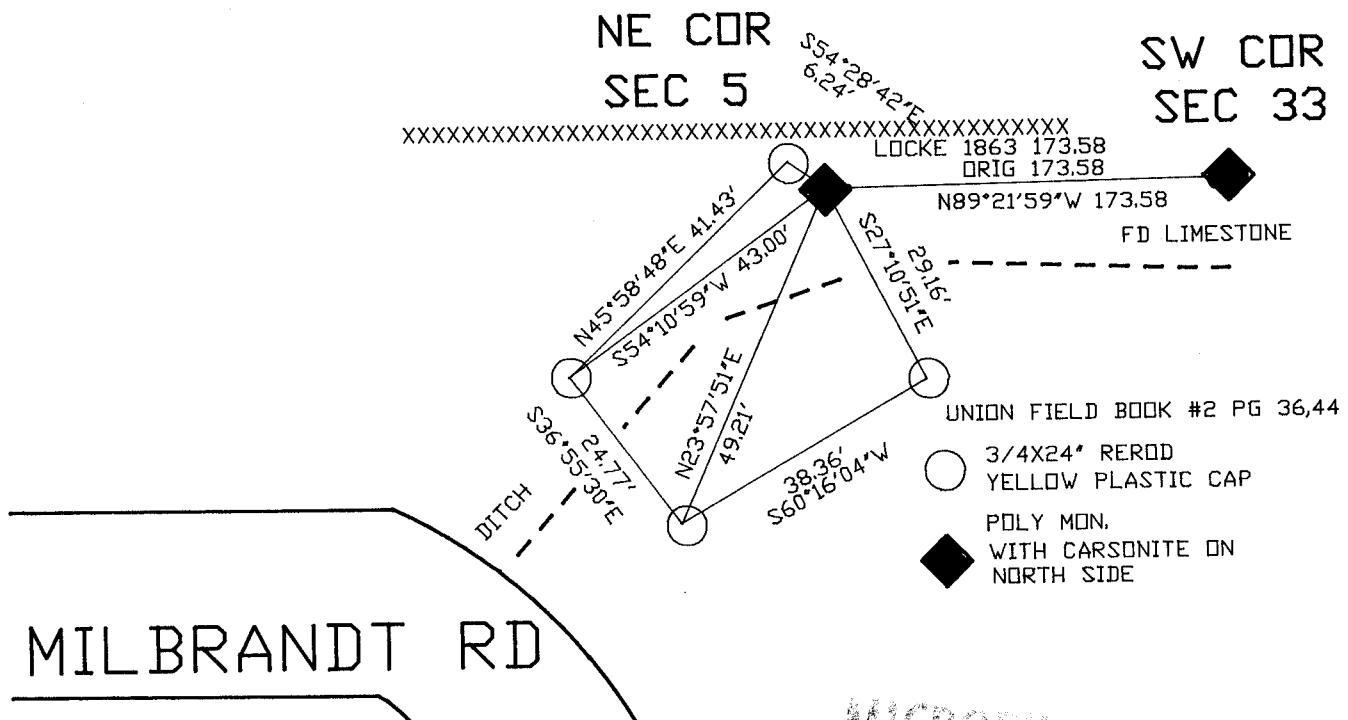
MAGNOLIA TWP
ROCK COUNTY WI

IF AVAILABLE STATE PLANE COORDINATES

North (Y) _____ Eleve. (Z) _____
East (X) _____ Zone _____
Hor. Datum _____ Vert. Datum _____

◐ CORNER MONUMENT ○ WITNESS MONUMENT

BEARINGS ARE BASED ON: ASSUMED



MICROFILMED

SHEET _____ OF _____

CORNER CODE: A 9

(B) Describe any record evidence, monument evidence, occupational evidence, testimonial evidence or any other material evidence you considered, and whether the monument was found or placed.

1833 ORIG SURVEY, INTERSECTED N BOUNDARY 173.58 WEST OF THE POST. BURR OAK 12 S34W 66.8

1863 LOCKE VOL 1 PG 183 FOUND REMAINS OF BEARING TREE AT THE SW CORNER OF SECTION 33. SHOWS THAT THE NE CORNER OF SEC 5 IS 173.58 WEST OF THE SW CORNER OF SECTION 33 AND CALLS FOR THE FOLLOWING DISTANCES FROM THE NE CORNER OF SECTION 5:
TO E 1/4 CORNER OF SEC 5 2212.98
TO N 1/4 CORNER OF SEC 5 2665.08
TO A HB THAT IS TO THE EAST 1562.88

1863 LOCKE VOL 1 PG 193 SHOWS THAT THE NE CORNER OF SECTION 5 IS 173.58 WEST OF THE SW CORNER OF SECTION 33 AND 2663.76 TO THE N 1/4 CORNER OF SECTION 4.

1870 RUGER REMONUMENTATION (UNION TWP) - EAST ON SOUTH LINE OF SE 1/4 OF SECTION 32 ON A VAR 6-30 OFFSET SOUTH 3.63' AT 2629.11 INTERSECTED EAST BOUNDARY LINE 8.58' SOUTH OF CORNER. FOUND OLD STAKE AT CORNER. COR VAR 6-36. CALLS FOR 2665.18 TO THE W 1/4 CORNER AND 2623.01 TO THE S 1/4 CORNER OF SECTION 33.

DUG A SMALL HOLE AND FOUND NOTHING. PLACE POLY. MONUMENT ON LINE WITH THE SE CORNER AND THE S 1/4 CORNER OF SECTION 32 AT RECORD DISTANCE.

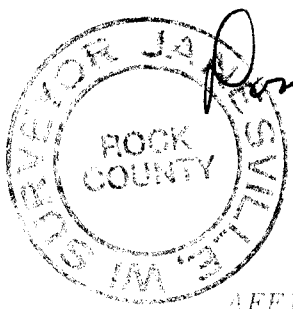
(C) Was the corner restored through acceptance of (1) an obliterated evidence location, or, (2) a found perpetuated location?

RESTORED CORNER THROUGH ACCEPTANCE OF OBLITERATED EVIDENCE LOCATION.

(D) Describe any material discrepancy between the location of the corner as restored or reestablished and the location of that corner as previously restored or reestablished by distance and direction. Show the discrepancy on the plan view drawing under (a), above. Show the distances between the corner as previously restored or reestablished and (1) the corner as restored or reestablished, and (2) to at least 1 of the witness monuments shown on the drawing in (a), above.

(E) Was the corner reestablished through lost corner proportionate methods? If so, show the method, including the directions and distances to other public land survey corners used as evidence or used for proportioning the corner location.

I, Donald Barnes, hereby certify that the corner points as identified by the corner code index were, in a field survey on, JULY 30 1991, established, re-established, monumented, re-monumented, recovered or restored as expressed below and in conformance with the regulations and rules as required in the current manual of survey instructions of the United States Department of the Interior, Bureau of Land Management.



COUNTY SURVEYOR FILING DATA
Date of computer entry _____
Date microfilmed _____
Number of included sheets _____
CORNER CODE _____

AFFIX YOUR LAND SURVEYOR SEAL