

U.S. PUBLIC LAND SURVEY MONUMENT RECORD

For Public Land Survey Corners in the

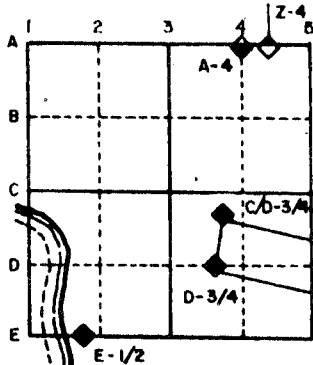
T. 3 N., R. 10 E.

CORNER CODE INDEX

	1	2	3	4	5	6	7	8	9	10	11	12	13	14	15	16	17	18	19	20	21	22	23	24	25
A																									
B																									
C	6																								
D		5																							
E			4																						
F				3																					
G					2																				
H																									
I																									
J	7																								
K		8																							
L			9																						
M				10																					
N					11																				
O						12																			
P							13																		
Q								14																	
R									15																
S										16															
T											17														
U												18													
V													19												
W														20											
X															21										
Y																22									
Z																	23								
																		24							
																			25						
																				26					
																					27				
																						28			
																							29		
																								30	
																									31
																									32
																									33
																									34
																									35
																									36

PLACE MONUMENT SYMBOL (◆) AT PROPER LOCATION ON ABOVE INDEX

EXAMPLE



MAGNOLIA TWP.
ROCK COUNTY WI

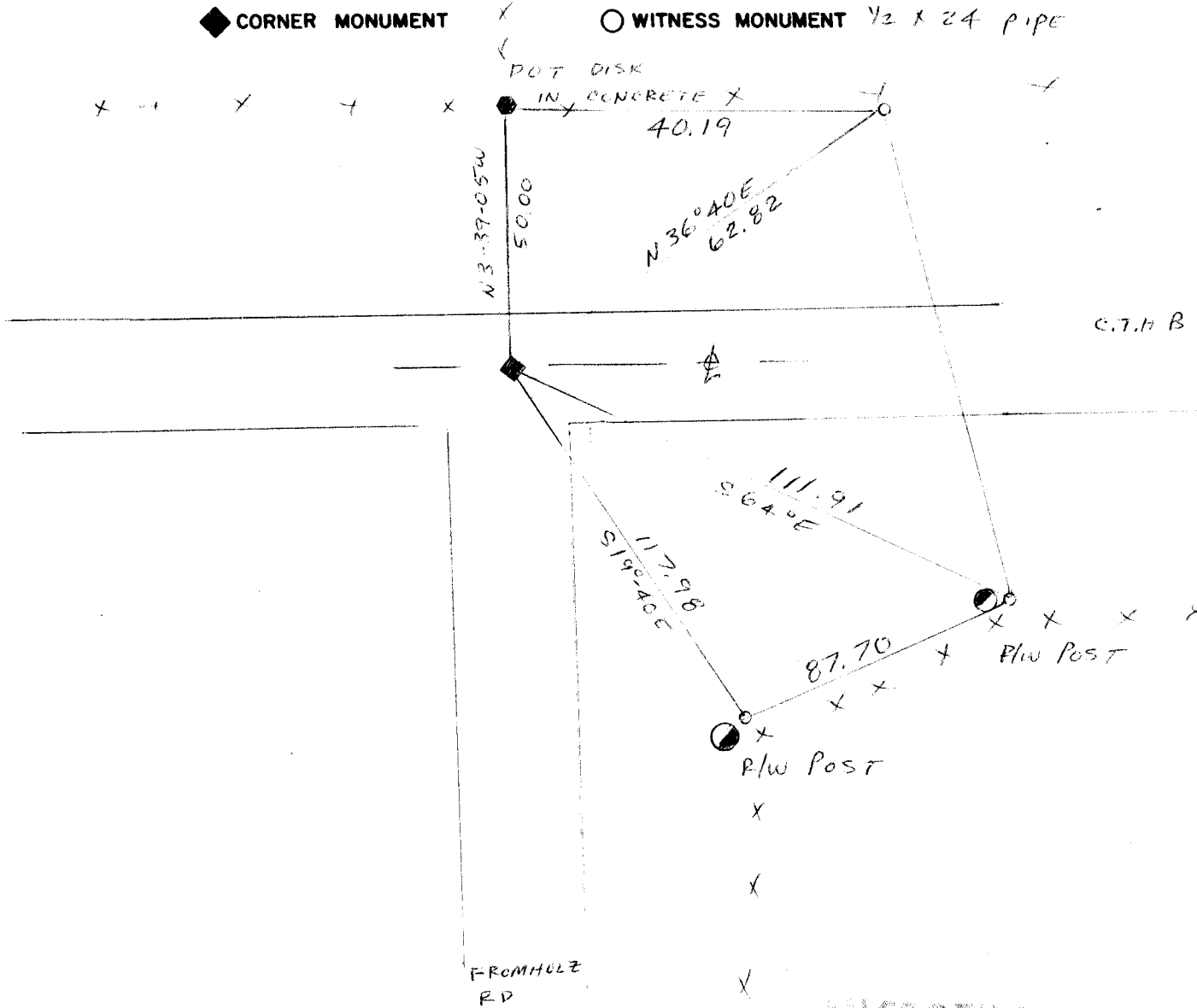
IF AVAILABLE
STATE PLANE COORDINATES

North (Y) 25,014.26 Eleve. (Z) _____
 East (X) 2,180,777.82 Zone _____
 Hor. Datum _____ Vert. Datum _____
 1988 BARNES
 251,013.84
 2,180,777.24

(a.)

◆ CORNER MONUMENT

○ WITNESS MONUMENT 1/2 x 24 pipe



FIELD BOOK _____ PAGE # _____

MICROFILMED

SHOW A PLAN VIEW DRAWING DEPICTING THE CORNER MONUMENT AND SURROUNDING PHYSICAL FEATURES, INCLUDING THE EXCAVATION AREA AND DEPTH. THE CORNER MONUMENT SHALL HAVE THE FOLLOWING CHARACTERISTICS: 1) HAVE AT LEAST TWO PREDETERMINED BREAK-OFF POINTS. 2) IF BROKEN, LEAVE A PERMANENTLY MAGNETIZED REMNANT AT THE ORIGINAL POINT. 3) MUST BE EXTENDABLE. 4) THE CAP IS INSCRIBED: ROCK COUNTY SURVEY MONUMENT - PENALTY FOR DISTURBING MARKER. 5) OR AN EXISTING CUT LIMESTONE. AN IRON PIPE 1 1/2" x 4'0" (MINIMUM) MAY BE USED IN AREAS WHERE GROUND WATER IS WITHIN ONE FOOT OF THE SURFACE. IF THE CORNER IS OCCUPIED BY AN IMPROVEMENT (MANHOLE, BURIED CABLE, ETC.) ANY DURABLE, DISTINCT MONUMENT MAY BE USED. CORNERS SHALL BE REFERENCED WITH AT LEAST 4 DURABLE WITNESS MONUMENTS. WITNESS MONUMENTS SHALL BE MADE OF CONCRETE, NATURAL STONE, IRON OR OTHER EQUALLY DURABLE MATERIAL, EXCEPT WOOD. DESCRIBE THE CORNER AND THE WITNESS MONUMENTS.

CORNER CODE:

19

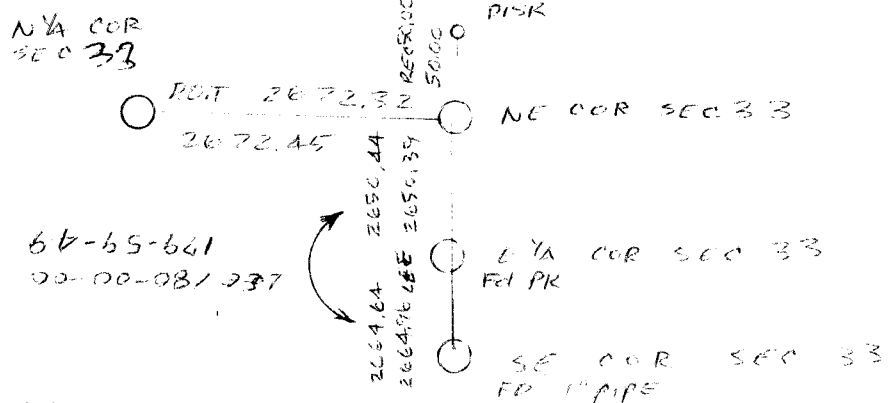
- (b.) Describe any record evidence, monument evidence, occupational evidence, testimonial evidence or any other material evidence you considered, and whether the monument was found or placed.
1. HARRISON 1833 PLACED WOOD POST & MARKED BEARING TREES.
 2. CHURCH 1858 MEASURED TO CORNER BUT DID NOT DESCRIBE THE MONUMENT.
 3. LEE 1869 FOUND NE BT & STUMP OF SE BT. SET BR OAK STAKE WITH HH ON N&S, LIMESTONES ON E&W.
 4. RUGER 1874 FOUND CORNER ESTABLISHED BY LEE
 5. RUGER 1882 FOUND HH & NE BR. PUT FLAT HH & ON TOP LS 17"X8"X12"
 6. RH BATTERMAN JR. 1960 DUG & FOUND HH WITH WOOD STAKE
 7. H. LEE 1973 MEASURED TO THE CORNER BUT DID NOT DESCRIBE THE MONUMENT.
 8. DEPARTMENT OF TRANSPORTATION 1973. REFERENCED THE CORNER FOR THE ROAD CONSTRUCTION PROJECT.

I ESTABLISHED THE CORNER SO IT IS IN HARMONY WITH D.O.T.'S REFERENCE DISK, THE N1/4 CORNER OF SECTION 32, AND THE EAST LINE OF SECTION 32 AS MEASURED BY H. LEE.

(c.) Was the corner restored through acceptance of (1) an obliterated evidence location, or, (2) a found perpetuated location?

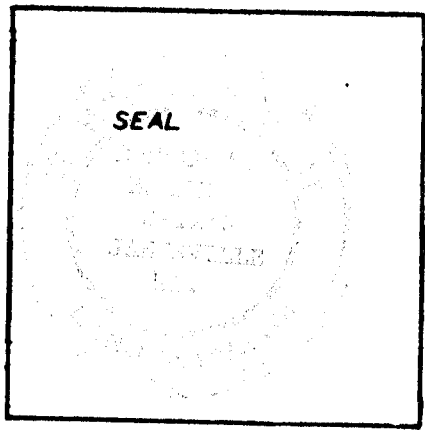
ACCEPTED OBLITERATED EVIDENCE LOCATION.

(d.) Describe any material discrepancy between the location of the corner as restored or reestablished and the location of that corner as previously restored or reestablished by distance and direction. Show the discrepancy on the plan view drawing under (a), above. Show the distances between the corner as previously restored or reestablished and (1) the corner as restored or reestablished, and (2) to at least 4 of the witness monuments shown on the drawing in (a), above.



(e.) Was the corner reestablished through lost corner proportionate methods? If so, show the method, including the directions and distances to other public land survey corners used as evidence or used for proportioning in determining the corner location.

I, Ronald Bracey, hereby certify that the corner points as identified by the corner code index were, in a field survey on Aug 7 1985, established, re-established, monumented, re-monumented, recovered or restored as expressed below and in conformance with the regulations and rules as required in the current manual of survey instructions of the United States Department of Interior, Bureau of Land Management.



COUNTY SURVEYOR FILING DATA
 Date of Computer Entry _____
 Date Received _____
 Date Microfilmed AUGUST 1985
 Treasurer's Receipt No. _____
 Number of Included Sheets _____

AFFIX YOUR LAND SURVEYOR SEAL. CORNER CODE 7