

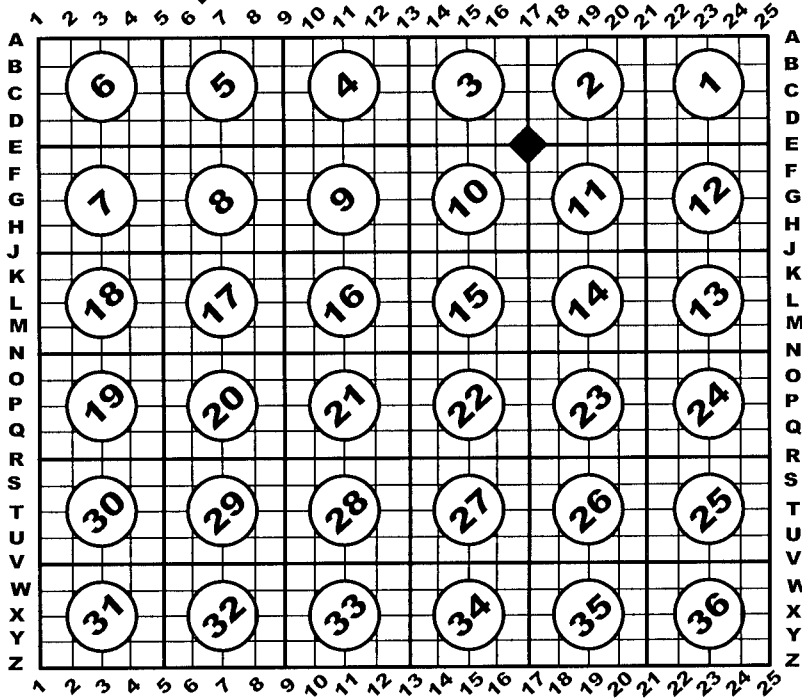
# U.S. PUBLIC LAND SURVEY MONUMENT RECORD

For Public Land Survey Corners In:  
T. 3 N. - R. 10 E. of the 4th P.M.

WI. ADMINISTRATIVE CODE  
A-E 7.08 REQUIREMENT

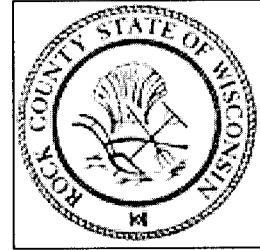
### CORNER CODE INDEX

(PLACE SYMBOL AT THE PLSS CORNER)



**MAGNOLIA** Twp.

**Rock County, WI.**



### COORDINATES

**GNSS DERIVED VIA WISCORS  
WISCORS, ROCK DATUM, (NA2011)**

NORTHING: 291854.40      ELEV: n/a  
EASTING: 421727.22

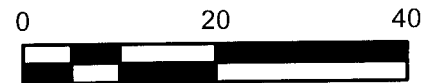
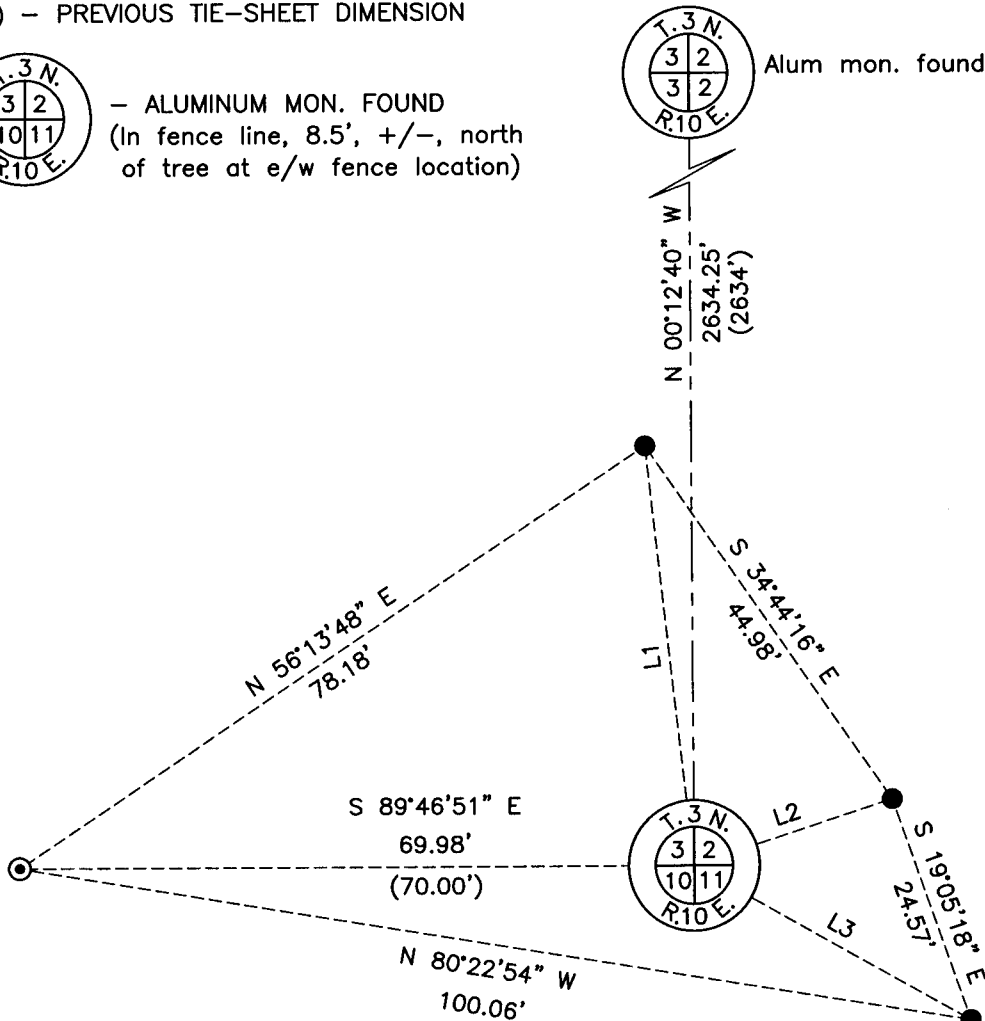
Vertical Datum: NAVD 88, (If applicable)

**(a) LEGEND**

- - 3/4" x 24" REBAR SET W/RED CAP
- ⊙ - 3/4" IRON REBAR FOUND
- (#) - PREVIOUS TIE-SHEET DIMENSION

- ALUMINUM MON. FOUND  
(In fence line, 8.5', +/-, north of tree at e/w fence location)

Alum mon. found



LINE	BEARING	DISTANCE
L1	S 06°31'06" E	44.01'
L2	S 71°50'50" W	21.71'
L3	N 60°09'00" W	33.05'

**B) Describe any record evidence, monument evidence, occupational evidence, testimonial evidence or any other material evidence you considered, and whether the monument was found or placed.**

I found the aluminum monument as shown on the Vol. 5, Pg. 159 surveyor record, (Barnes – 1976). The same record shows a 2634 foot dimension to the W1/4 corner of 2-3-10 and I measured 2634.25 feet; the same record shows a dimension of 2661 feet to the E1/4 corner of 10-3-10; I measured the same as 2661.44 feet.

I accepted the aluminum as found and no witnesses have ever been set for this corner; I set four per the map.

**C) Was the corner restored through acceptance of (1) an obliterated evidence location, or, (2) a found perpetuated location?**

Found perpetuated location.

**D) Describe any material discrepancy between the location of the corner as restored or reestablished and the location of that corner as previously restored or reestablished by distance and direction. Show the discrepancy on the plan view drawing under (a), above. Show the distances between the corner as previously restored or reestablished and (1) the corner as restored or reestablished, and (2) to at least 4 of the witness monuments shown on the drawing in (a), above.**

I did not find a discrepancy between the corner restored and a previously documented corner location. *Discrepancy* being defined as *disagreeing* with a corner location, *not* as noting dimensional differences between current/former tie sheets due to measuring methods. The current and *most recent* tie-sheet dimensions filed for the corner are noted.

**(E) Was the corner reestablished through lost corner proportionate methods? If so, show the method, including the directions and distances to other public land survey corners used as evidence or used for proportioning the corner location.**

N/A

I, **Jason R. Houle**, hereby certify that the corner location as identified by the corner code index was determined by me under my direction and control and that this U.S. Public Land Survey Monument Record is correct and complete to the best of my knowledge and belief.

**CORNER CODE: E-17**  
(A.E. 7.08 REQUIREMENT)

