

(b.) Describe any record evidence, monument evidence, occupational evidence, testimonial evidence or any other material evidence you considered, and whether the monument was found or placed.

1868 LOCKE VOL 1 PG 326 FOUND STAKE IN CENTER OF HIGHWAY & IN LINE OF FENCES E & W. SET BUR OAK STAKE SURROUNDED BY 3 HARDHEAD STONES.

1869 LEE VOL 1 PG 353 FOUND REMAINS OF STONE IN CENTER OF ROAD IN LINE WITH OLD SOD FENCES E & W. SET HH 20" LONG

1927 BATTERMAN VOL 3 PG 164 STATED THAT CORNER WAS GRADED OUT.

1974 LEE CSM VOL 4 PG 163 DOES NOT STATE ANYTHING ABOUT THE CORNER EXCEPT HE SHOWS DISTANCE AND LINE TO IT.

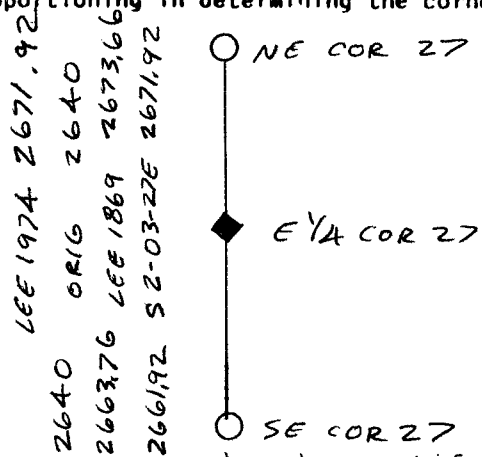
(c.) Was the corner restored through acceptance of (1) an obliterated evidence location, or, (2) a found perpetuated location?

NO

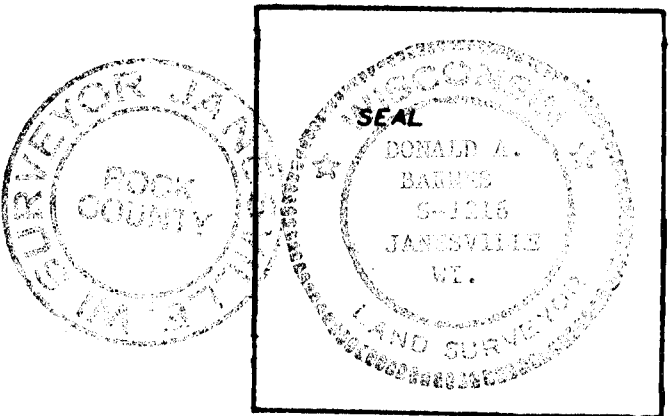
(d.) Describe any material discrepancy between the location of the corner as restored or reestablished and the location of that corner as previously restored or reestablished by distance and direction. Show the discrepancy on the plan view drawing under (d), above. Show the distances between the corner as previously restored or reestablished and (1) the corner as restored or reestablished, and (2) to at least 4 of the witness monuments shown on the drawing in (d), above.

I FOUND LEE'S CSM PIPES. THEY ARE ON LINE WITH THE NORTHEAST AND SOUTHEAST CORNERS OF SECTION 27 AND HIS DISTANCE FROM THE NORTHEAST TO THE EAST QUARTER CORNER IS THE PRORATED DISTANCE WITH LEE'S 1869 DISTANCE. I DID NOT HOLD TO LOCKE AND LEE'S (1869) CALL TO THE CENTER OF THE ROAD BECAUSE OF THE EXTREMELY LARGE ROAD CUT. 472.25 FEET NORTH OF THE CORNER THE CSM SHOWS THAT THE SECTION LINE IS 4.5 EAST OF THE CENTER LINE OF THE PAVEMENT. THE CORNER IS 7.5 EAST OF THE CENTER LINE OF THE PAVEMENT.

(e.) Was the corner reestablished through lost corner proportionate methods? If so, show the method, including the directions and distances to other public land survey corners used as evidence or used for proportioning in determining the corner location.



I, Donald Barnes, hereby certify that the corner points as identified by the corner code index were, in a field survey on Dec 11 1988, established, re-established, monumented, re-monumented, recovered or restored as expressed below and in conformance with the regulations and rules as required in the current manual of survey instructions of the United States Department of Interior, Bureau of Land Management.



COUNTY SURVEYOR FILING DATA
 Date of Computer Entry _____
 Date Received _____
 Date Microfilmed _____
 Treasurer's Receipt No. _____
 Number of Included Sheets _____

AFFIX YOUR LAND SURVEYOR SEAL. CORNER CODE 717