

U.S. PUBLIC LAND SURVEY MONUMENT RECORD

For Public Land Survey Corners in:

WI ADMINISTRATIVE CODE A-E 7.08 REQUIREMENT

T. 3N., R. 10E

CORNER CODE INDEX

A	1	2	3	4	5	6	7	8	9	10	11	12	13	14	15	16	17	18	19	20	21	22	23	24	25
B																									
C	6																								
D																									
E																									
F																									
G	1																								
H																									
I																									
J																									
K																									
L	18																								
M																									
N																									
O																									
P	19																								
Q																									
R																									
S																									
T	30																								
U																									
V																									
W																									
X	31																								
Y																									
Z																									

MAGNOLIA TWP

ROCK COUNTY WI

IF AVAILABLE
ROCK COUNTY COORDINATES PREFERRED

North _____ Elev. _____

East _____


Hor. Datum _____ Vert. Datum _____

LATITUDE _____ ELLIPS. HT. _____


LONGITUDE _____

GPS (X) _____ TRAVERSE (X) _____

BASED ON THE FOLLOWING CONTROL:

PLACE MONUMENT SYMBOL  AT PROPER LOCATION ON ABOVE INDEX

 CORNER MONUMENT

 WITNESS MONUMENT

(a)

BEARINGS ARE BASED ON:

FIELD BOOK _____ PAGE # _____

SHEET 1 OF 2

SHOW A PLAN VIEW DRAWING DEPICTING THE CORNER MONUMENT AND SURROUNDING PHYSICAL FEATURES, INCLUDING THE EXCAVATION AREA AND DEPTH.

PLANNING & ZONING COMMITTEE ADOPTED THE ABOVE FORM ON 12/2/1982

CORNER CODE N-17

MA569

(B) Describe any record evidence, monument evidence, occupational evidence, testimonial evidence or any other material evidence you considered, and whether the monument was found or placed.

- 1869 LEE VOL 1 PG 356 FD PIECE OF R.R. IRON SET BY LOCKE. VAR 7-15
2664.42 TO N $\frac{1}{4}$ COR SEC 22, VAR 7-30 2657.66 TO E $\frac{1}{4}$ COR SEC 22.
- 1929 BATTERMAN VOL 3 PG 165
- 1937 SUNNY VOL 3 PG 390 FOUND PIPE IN CONC. ROAD WEST 844.7 TO PROPERTY
COR.
- 1968 BATTERMAN VOL 4 PG 360 FD BRASS PIPE & REFERENCED SAME.
- 1978 BARNES VOL 5 PG 391 CALLS FOR 2662.80 TO N $\frac{1}{4}$ COR SEC 22. WITH TWO
1 INCH PIPES 844.61 & 1009.61 TO THE WEST.
- 1978 BARNES VOL 5 PG 393 SET PK FROM NE, SW, & SE REFERENCE PIPES.
2661.30 TO E $\frac{1}{4}$ COR SEC 22 & 5322.6 TO SE COR SEC 22. SHOWS
REFERENCE PIPES.
- 1984 BARNES VOL 6 PG 316 FOLLOWING INFORMATION WAS COPIED FROM DOT R/W
MAP. TYPE OF MON. PK SHEET 4.12 PROJECT 5571-01-21 PROJECT.
COORDINATES 261,735.04; 2,191, 170.76
- 1996 BARNES VOL 6 PG 445 FD PK. N89-49-37W 2662.57 TO N $\frac{1}{4}$ COR SEC 22,
S0-09-45E 2660.93 TO E $\frac{1}{4}$ COR SEC 22, & S0-09-38E 2661.18 FROM E $\frac{1}{4}$
TO SE CORNERS SEC 22.

FD PK 1.8' WEST OF CENTER PVMT & ON LINE CENTER OF PVMT TO THE EAST. PK
IN HARMONY WITH REFERENCE PIPES TO THE NW & NE.

C) Was the corner restored through acceptance of (1) an obliterated evidence location, or, (2) a found
perpetuated location?

ACCEPTED FOUND PK.

D) Describe any material discrepancy between the location of the corner as restored or reestablished and the
location of that corner as previously restored or reestablished by distance and direction. Show the discrepancy
on the plan view drawing under (a), above. Show the distances between the corner as previously restored or
reestablished and (1) the corner as restored or reestablished, and (2) to at least 4 of the witness monuments
shown on the drawing in (a), above.

(E) Was the corner reestablished through lost corner proportionate methods? If so, show the method, including
the directions and distances to other public land survey corners used as evidence or used for proportioning the
corner location.

I, Donald Barnes, hereby certify that the corner location as identified by the corner code index was
determined by me under my direction and control and that this U.S. Public Land Survey Monument Record
is correct and complete to the best of my knowledge and belief.

Donald Barnes
May 15, 2000

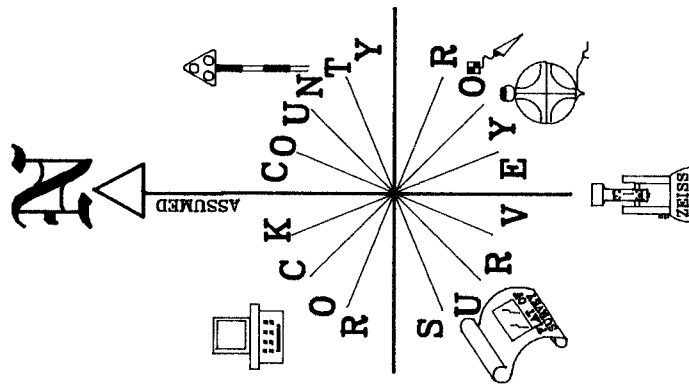
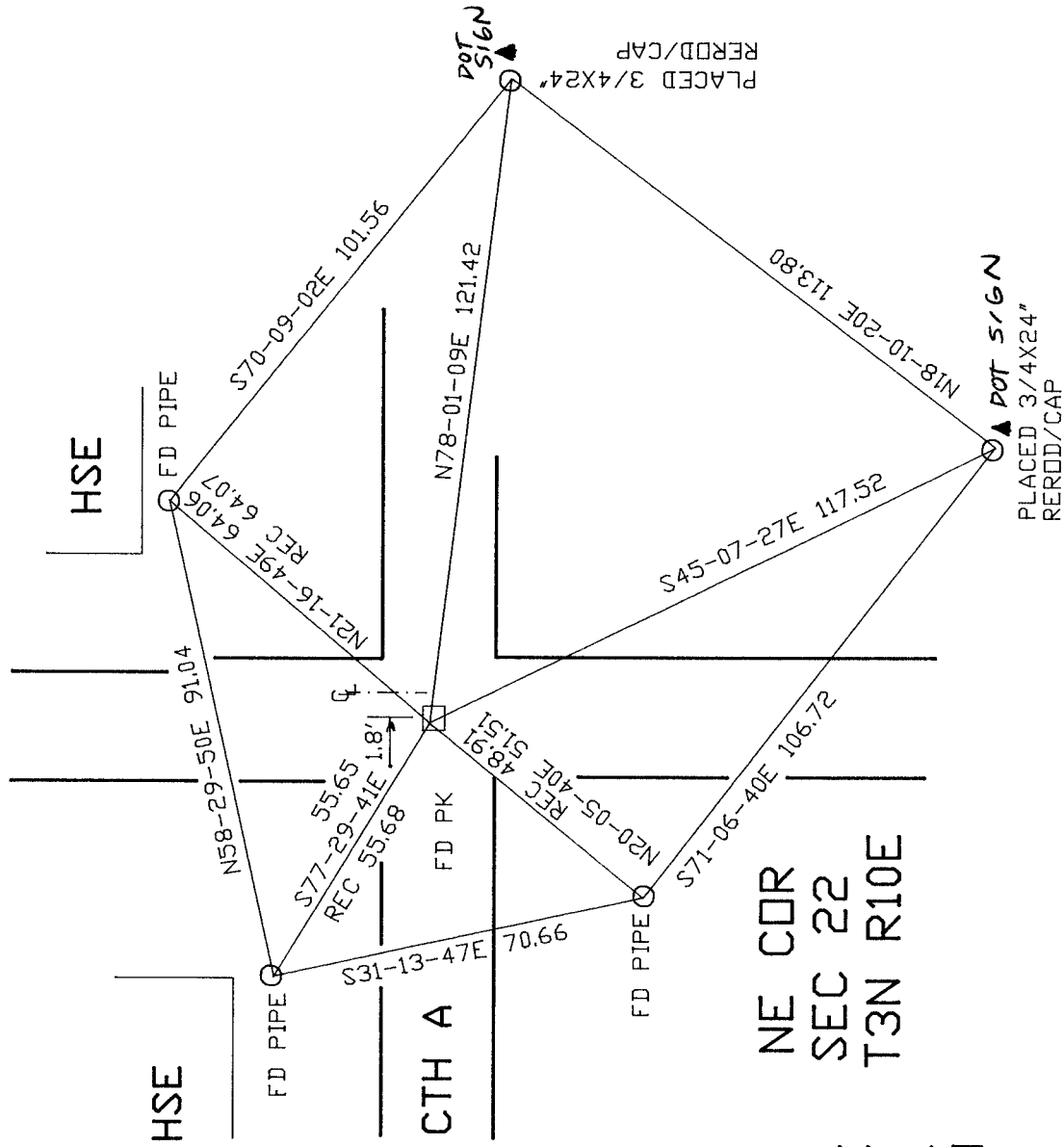
Emboss

Number of included sheets 1

CORNER CODE **N-17**

A-E 7.08 REQUIREMENT

STH 213



OBSERVATION SHEET

Donald Barnes
 EMBOSSED SEAL
 May 15, 2000