

U.S. PUBLIC LAND SURVEY MONUMENT RECORD

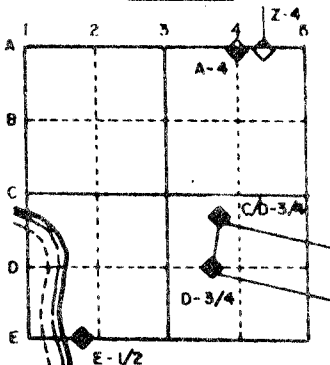
For Public Land Survey Corners in the

T 3 N, R 10 E

CORNER CODE INDEX

	1	2	3	4	5	6	7	8	9	10	11	12	13	14	15	16	17	18	19	20	21	22	23	24	25
A																									
B																									
C																									
D																									
E																									
F																									
G																									
H																									
I																									
J																									
K																									
L																									
M																									
N																									
O																									
P																									
Q																									
R																									
S																									
T																									
U																									
V																									
W																									
X																									
Y																									
Z																									

EXAMPLE



MAGNOLIA TWP
ROCK COUNTY WI

IF AVAILABLE
STATE PLANE COORDINATES

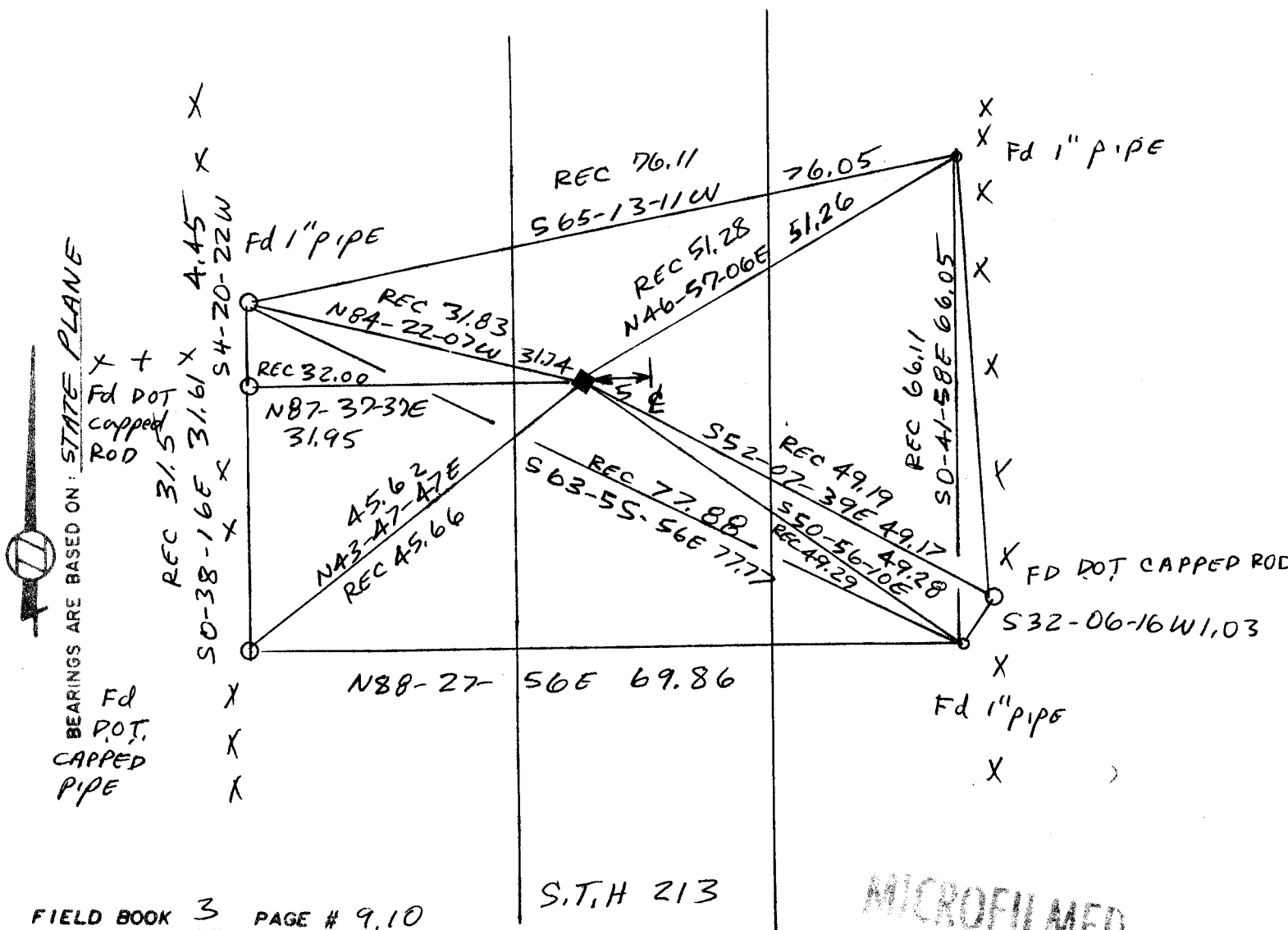
North (Y) 248,429.68 Elev. (Z) _____
 East (X) 2,191,475.55 Zone _____
 Hor. Datum _____ Vert. Datum _____

PLACE MONUMENT SYMBOL (◆) AT PROPER LOCATION ON ABOVE INDEX

(a)

◆ CORNER MONUMENT

○ WITNESS MONUMENT



FIELD BOOK 3 PAGE # 9,10

SHOW A PLAN VIEW DRAWING DEPICTING THE CORNER MONUMENT AND SURROUNDING PHYSICAL FEATURES, INCLUDING THE EXCAVATION AREA AND DEPTH. THE CORNER MONUMENT SHALL HAVE THE FOLLOWING CHARACTERISTICS: 1) HAVE AT LEAST TWO PREDETERMINED BREAK-OFF POINTS. 2) IF BROKEN, LEAVE A PERMANENTLY MAGNETIZED REMNANT AT THE ORIGINAL POINT. 3) MUST BE EXTENDABLE. 4) THE CAP IS INSCRIBED ROCK COUNTY SURVEY MONUMENT - PENALTY FOR DISTURBING MARKER. 5) OR AN EXISTING CUT LIMESTONE. AN IRON PIPE 1 1/2" x 4'0" (MINIMUM) MAY BE USED IN AREAS WHERE GROUND WATER IS WITHIN ONE FOOT OF THE SURFACE. IF THE CORNER IS OCCUPIED BY AN IMPROVEMENT (MANHOLE, BURIED CABLE, ETC.) ANY DURABLE, DISTINCT MONUMENT MAY BE USED. CORNERS SHALL BE REFERENCED WITH AT LEAST 4 DURABLE WITNESS MONUMENTS. WITNESS MONUMENTS SHALL BE MADE OF CONCRETE, NATURAL STONE, IRON OR OTHER EQUALLY DURABLE MATERIAL, EXCEPT WOOD. DESCRIBE THE CORNER AND THE WITNESS MONUMENTS.

CORNER CODE: X17

(b.) Describe any record evidence, monument evidence, occupational evidence, testimonial evidence or any other material evidence you considered, and whether the monument was found or placed.

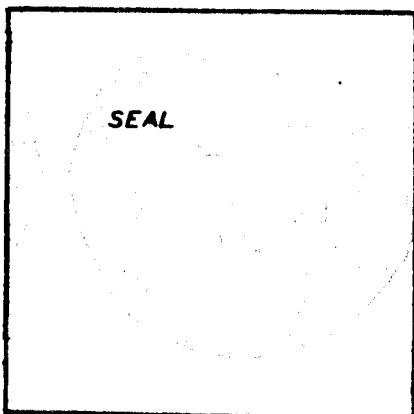
SEE SHEET 2

(c.) Was the corner restored through acceptance of (1) an obliterated evidence location, or, (2) a found perpetuated location?

(d.) Describe any material discrepancy between the location of the corner as restored or reestablished and the location of that corner as previously restored or reestablished by distance and direction. Show the discrepancy on the plan view drawing under (d), above. Show the distances between the corner as previously restored or reestablished and (1) the corner as restored or reestablished, and (2) to at least 4 of the witness monuments shown on the drawing in (a), above.

(e.) Was the corner reestablished through lost corner proportionate methods? If so, show the method, including the directions and distances to other public land survey corners used as evidence or used for proportioning in determining the corner location.

I, Donald James, hereby certify that the corner points as identified by the corner code index were, in a field survey on Dec 1 1988, established, re-established, monumented, re-monumented, recovered or restored as expressed below and in conformance with the regulations and rules as required in the current manual of survey instructions of the United States Department of Interior, Bureau of Land Management.



COUNTY SURVEYOR FILING DATA

Date of Computer Entry _____

Date Received _____

Date Microfilmed _____

Treasurer's Receipt No. _____

Number of Included Sheets 1

AFFIX YOUR LAND SURVEYOR SEAL.

CORNER CODE X17

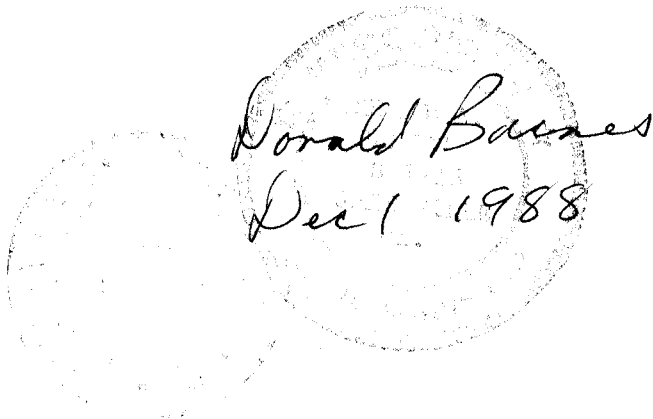
(b) Describe any record evidence, monument evidence, occupational evidence, testimonial evidence or any other material evidence you considered, and whether the monument was found or placed.

1858 CHURCH VOL 1 PG 84 USED TO SUBDIVIDE SECTION 35. NO COMMENTS ABOUT CORNER.
1874 RUGER VOL 2 PG 134 USED TO SUBDIVIDE SECTION 34. FOUND OLD STAKE DEEP IN GROUND & REDISH HH STONE 17x15x11 ON TOP OF STAKE.
1929 BATTERMAN VOL 3 PG 163 FOUND RUGERS STAKE & STONE & REFERENCED SAME.
1932 SUNNY VOL 3 PG 151 RESET MONUMENT IN CONCRETE PAVEMENT WITH 1X36 PIPE FLUSH WITH PAVEMENT. NOTE: THIS CORNER WAS REFERENCED BY BATTERMAN PREPARATORY TO PAVING HIGHWAY & RESET BY ME.
1967 BATTERMAN VOL 3 PG 163 FOUND A 1/2 PIPE IN CONCRETE PAVEMENT & REFERENCED SAME.
1967 BATTERMAN VOL 4 PG 336 FOND 1 PIPE IN CONCRETE PAVEMENT & REFERENCED SAME, SEE PAGE 489
1970 BATTERMAN VOL 4 PG 489 FOUND 1 1/2" PIPE IN CONCRETE PAVEMENT & REFERENCED SAME.
1985 WI D.O.T FIELD SURVEY NOTES FORM. REFERENCE TIES.

FOUND D.O.T. CAPPED RODS WITH SIGNS. ALSO FOUND OLD REFERENCE PIPES. ESTABLISHED CORNER AT LOCATION THAT WOULD FIT ALL THE REFERENCE PIPES THE BEST.

(c) Was the corner restored through acceptance of (1) an obliterated evidence location, or, (2) a found perpetuated location?

I ACCEPTED OBLITERATED EVIDENCE LOCATION.


Donald Barnes
Dec 1 1988