

U.S. PUBLIC LAND SURVEY MONUMENT RECORD

For Public Land Survey Corners In: WI ADMINISTRATIVE CODE A-E 7.08 REQUIREMENT

T. 3 N. - R.10 E. of the 4th P.M.

CORNER CODE INDEX

(PLACE "◆" SYMBOL AT PROPER PLSS CORNER LOCATION)

A	1	2	3	4	5	6	7	8	9	10	11	12	13	14	15	16	17	18	19	20	21	22	23	24	25	A
B																										B
C	6					5				4					3					2						C
D																										D
E																										E
F																										F
G	7					8				9					10					11						G
H																										H
J																										J
K	18					17				16					15					14						K
L																										L
M	19					20				21					22					23						M
N																										N
O																										O
P	19					20				21					22					23						P
Q																										Q
R																										R
S																										S
T	30					29				28					27					26						T
U																										U
V																										V
W																										W
X	31					32				33					34					35						X
Y																										Y
Z																										Z
	1	2	3	4	5	6	7	8	9	10	11	12	13	14	15	16	17	18	19	20	21	22	23	24	25	

MAGNOLIA TWP
ROCK COUNTY WI

COORDINATES

(GNSS DERIVED VIA WISCORS)

NORTHING: 289192.98 ELEV: 897.1

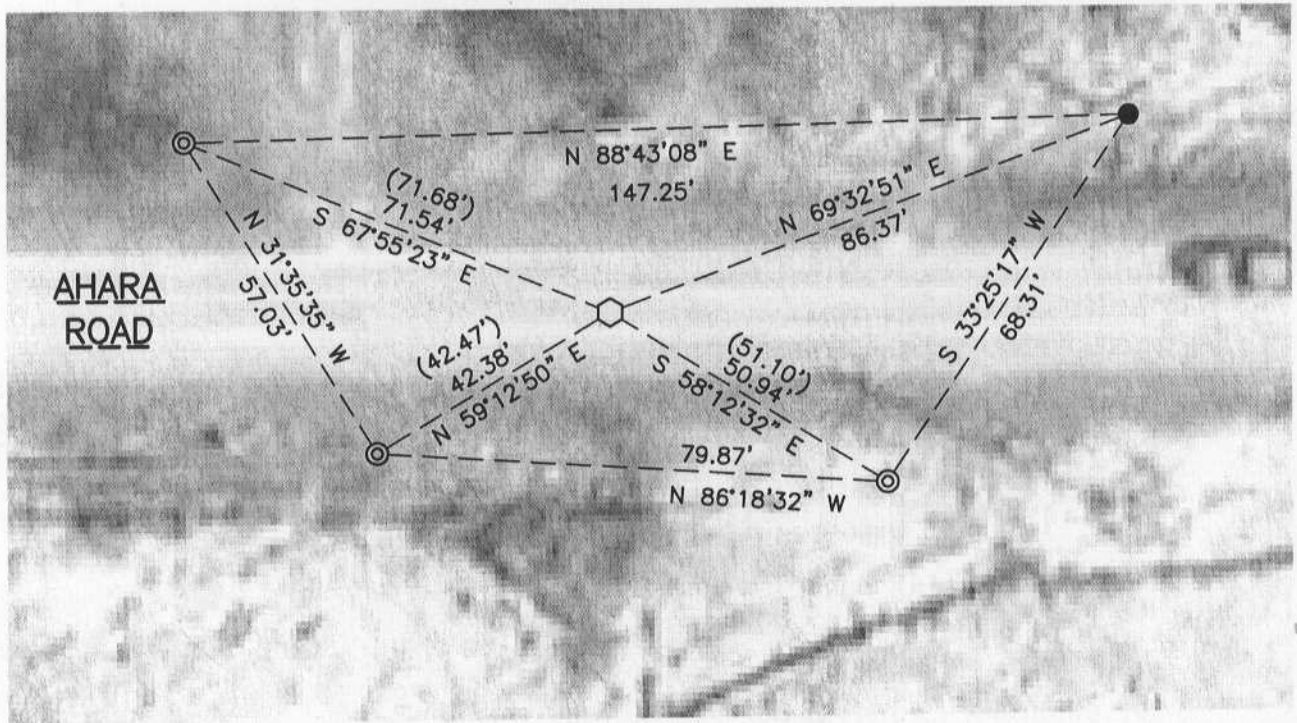
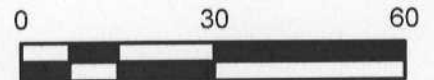
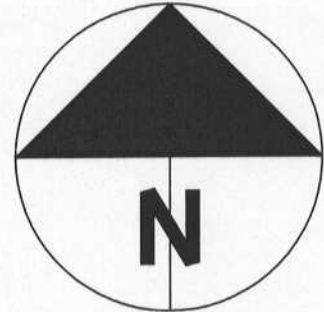
EASTING: 421736.63

Hor. Datum: WCCS-ROCK, (NA2011)

Vertical Datum: NAVD 88

(a) **LEGEND**

- - 5/8" x 24" REBAR SET, (RED CAP W/"PLSS WITNESS")
- ⊙ - IRON PIPE FOUND
- ⬡ - CAST IRON MON. FOUND
- (#) - PREVIOUS DIMENSION ON MOST RECENT TIE-SHEET RECORD



B) Describe any record evidence, monument evidence, occupational evidence, testimonial evidence or any other material evidence you considered, and whether the monument was found or placed.

I found and accepted the found cast iron monument as shown in Volume 5, Page 156. Also, I found 3 of the 4 witness pipes however; I adjusted some due to them being 5", +/-, out of the ground. The 2 Southerly pipes were out of the ground approximately 5" with the S.E. leaning slightly north; I straightened and reset the S.E. I set the S.W. pipe flush and the N.W. pipe was already flush and formerly near a power pole. I surveyed all pipe in addition to the new capped rebar, per the sketch.

C) Was the corner restored through acceptance of (1) an obliterated evidence location, or, (2) a found perpetuated location?

Found perpetuated location.

D) Describe any material discrepancy between the location of the corner as restored or reestablished and the location of that corner as previously restored or reestablished by distance and direction. Show the discrepancy on the plan view drawing under (a), above. Show the distances between the corner as previously restored or reestablished and (1) the corner as restored or reestablished, and (2) to at least 4 of the witness monuments shown on the drawing in (a), above.

N/A – Found witness pipe were adjusted so as to be plumb and flush with the ground.

(E) Was the corner reestablished through lost corner proportionate methods? If so, show the method, including the directions and distances to other public land survey corners used as evidence or used for proportioning the corner location.

N/A

i, Jason R. Houle, hereby certify that the corner location as identified by the corner code index was determined by me under my direction and control and that this U.S. Public Land Survey Monument Record is correct and complete to the best of my knowledge and belief.

CORNER CODE: G-17
(A.E. 7.08 REQUIREMENT)

