

Paper weight-110# (minimum)

Black nonfading ink required

# U.S. PUBLIC LAND SURVEY MONUMENT RECORD

For Public Land Survey Corners In:

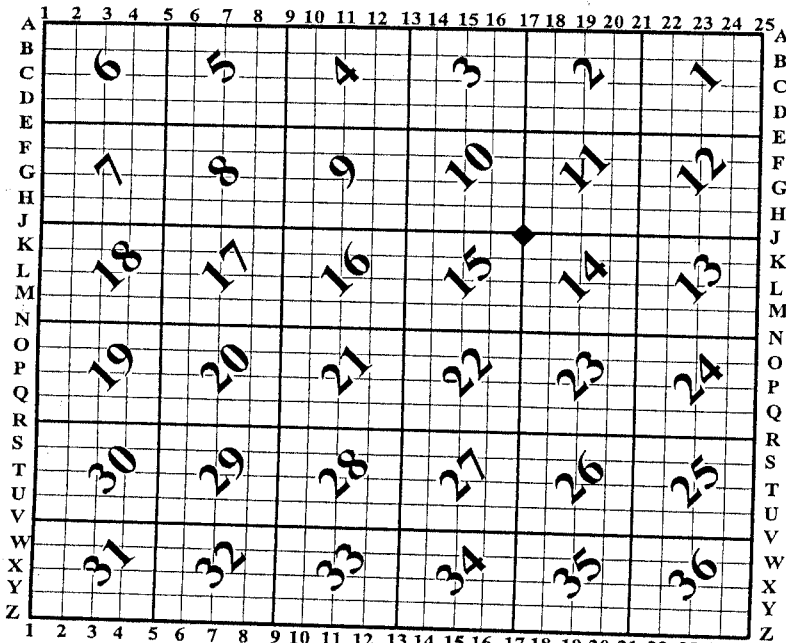
WI ADMINISTRATIVE CODE A-E 7.08 REQUIREMENT

T. 3 N. R. 10 E. 4th P.M.

REV 10/23/2004

USMONREC.DWG

CORNER CODE INDEX



MAGNOLIA TWP

ROCK COUNTY WI

IF AVAILABLE  
ROCK COUNTY COORDINATES PREFERRED

North 286542.33 Elev. 905.05

East 421756.09

Hor. Datum NAD 83 Vert. Datum N/A

LATITUDE 42°43'49.53" (N) ELLIPS. HT.

LONGITUDE 089°17'20.35" (W) 759.3'

NAD83(91)  NETWORK ADJ. YR 1997

GPS (X)  TRAVERSE (X) N/A

BASED ON THE FOLLOWING CONTROL:

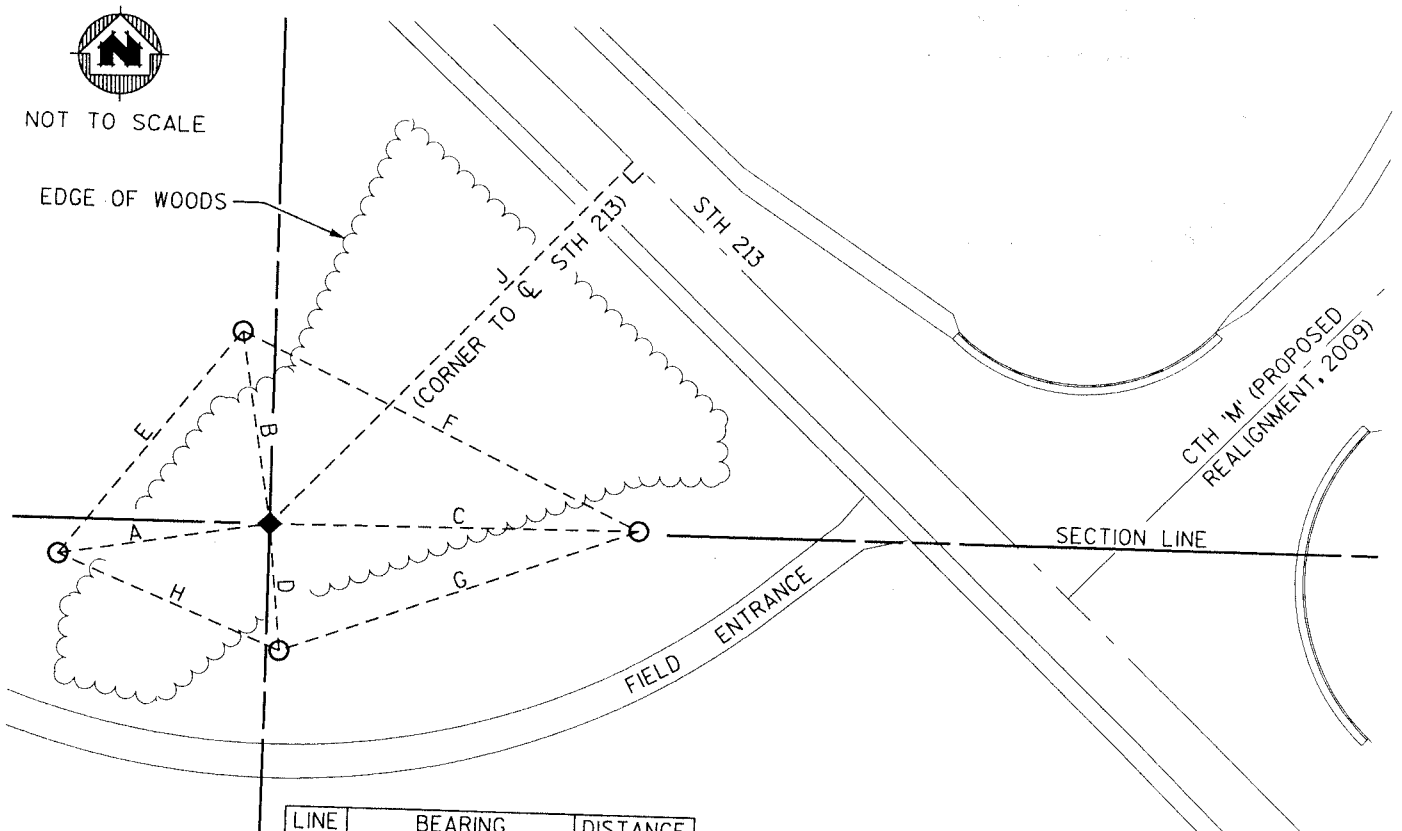
ALBANY GPS

PLACE MONUMENT SYMBOL  AT PROPER LOCATION ON ABOVE INDEX

◆ CORNER MONUMENT:  
FOUND ALUMINUM MONUMENT  
FLUSH W/ GROUND

○ WITNESS MONUMENT:  
3/4" REBAR (SET)

BEARINGS ARE BASED ON: WI CO. COORD. SYSTEM, ROCK CO. ZONE



LINE	BEARING	DISTANCE
A	S 80°23'32" W	55.84'
B	N 09°32'02" W	51.62'
C	N 89°31'27" E	97.41'
D	S 05°52'45" E	33.63'
E	N 37°40'31" E	76.09'
F	S 64°41'41" E	117.21'
G	S 69°57'55" W	100.02'
H	N 67°34'51" W	63.29'
J	-	135.50'

I hereby certify that the corner location on this record was determined by or under my direction and control and that this US Land Survey Monument Record is correct and complete to the best of my knowledge and belief.

*Bradley L. Tisdale*

Bradley L. Tisdale RLS S-2824

01-08-08  
January 8, 2008

Prepared by: MSA Professional Services, Inc.

FIELD BOOK N/A PAGE # N/A

SHEET 1 OF 1

SHOW A PLAN VIEW DRAWING DEPICTING THE CORNER MONUMENT AND SURROUNDING PHYSICAL FEATURES, INCLUDING THE EXCAVATION AREA AND DEPTH.

PLANNING & ZONING COMMITTEE ADOPTED THIS FORM ON 12/2/1982

CORNER CODE J-17