

U.S. PUBLIC LAND SURVEY MONUMENT RECORD

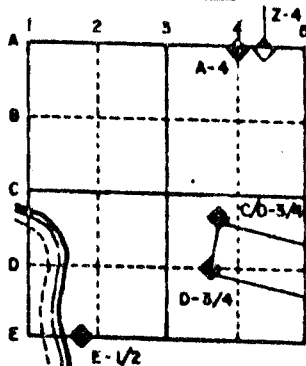
For Public Land Survey Corners in the
T. 3 N., R. 10 E.

CORNER CODE INDEX

	1	2	3	4	5	6	7	8	9	10	11	12	13	14	15	16	17	18	19	20	21	22	23	24	25
A																									
B																									
C	6																								
D		5																							
E			4																						
F				3																					
G					2																				
H																									
I																									
J																									
K																									
L																									
M																									
N																									
O																									
P																									
Q																									
R																									
S																									
T																									
U																									
V																									
W																									
X																									
Y																									
Z																									

PLACE MONUMENT SYMBOL (◆) AT PROPER LOCATION ON ABOVE INDEX

EXAMPLE



MAGNOLIA TWP
ROCK COUNTY WI

IF AVAILABLE
STATE PLANE COORDINATES

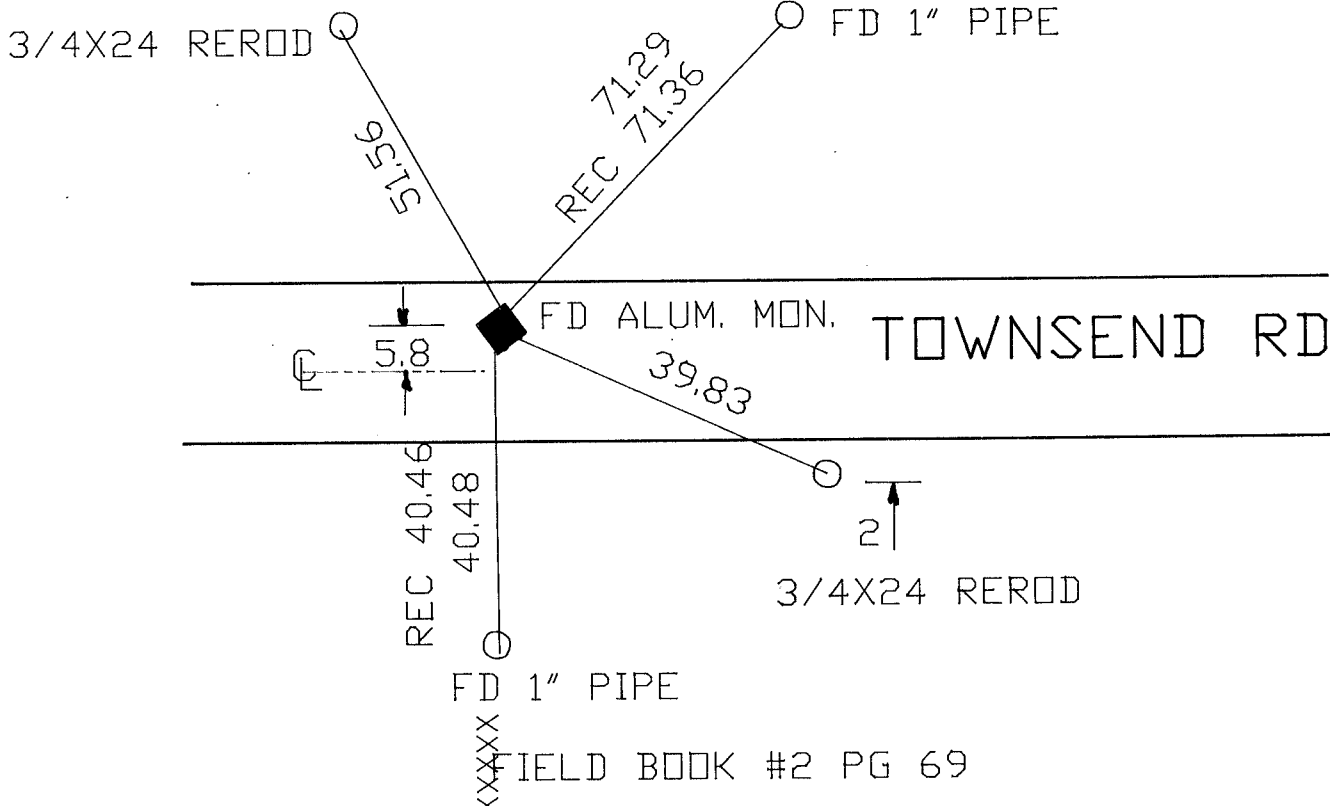
North (Y) _____ Eleve. (Z) _____
 East (X) _____ Zone _____
 Hor. Datum _____ Vert. Datum _____

(e.)

◆ CORNER MONUMENT

○ WITNESS MONUMENT

XX



BEARINGS ARE BASED ON:

FIELD BOOK #2 PG 69

MICROFILMED

SHEET ___ OF ___

CORNER CODE: R15

(B) Describe any record evidence, monument evidence, occupational evidence, testimonial evidence or any other material evidence you considered, and whether the monument was found or placed.

1869 LEE VOL 1 PG 353 SET BR OAK STAKE & SURROUNDED IT WITH 5 LIMESTONES. SET FROM SECTION CORNERS. DRAWING SHOWS THAT IT IS ON LINE BETWEEN THE NE AND NW CORNERS OF SECTION 27. SHOWS THE FOLLOWING DISTANCES:

2663.76 TO CENTER OF SECTION 27
2662.44 TO NW AND NE CORNERS OF SECTION 27

1869 LEE VOL 1 PG 356 FOUND STAKE SET BY SELF. SHOWS 2662.77 TO CENTER OF SECTION 22.

1971 LEE VOL 4 PG 541 FOUND OAK STAKE UNDER LIMESTONE 5' DOWN, FOLLOWED STAKE DOWN 1 FT DEEPER. AS SET BY LEE 1869. ALSO REFERENCED CORNER.

1988 BARNES VOL 6 PG 391 FOUND ALUMINUM MONUMENT. SHOWS ABOVE RECORD DISTANCES AND 2668.38 TO NE 27, 2667.87 TO NW 27, AND LOCK'S 5320.92 FROM NW TO NE CORNERS OF SECTION 27.

FOUND ALUMINUM MONUMENT.

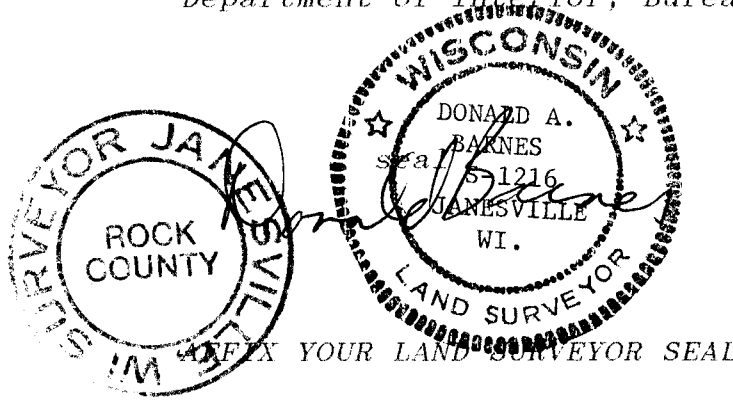
C) Was the corner restored through acceptance of (1) an obliterated evidence location, or, (2) a found perpetuated location?

ACCEPTED FOUND MONUMENT.

D) Describe any material discrepancy between the location of the corner as restored or reestablished and the location of that corner as previously restored or reestablished by distance and direction. Show the discrepancy on the plan view drawing under (a), above. Show the distances between the corner as previously restored or reestablished and (1) the corner as restored or reestablished, and (2) to at least 4 of the witness monuments shown on the drawing in (a), above.

(E) Was the corner reestablished through lost corner proportionate methods? If so, show the method, including the directions and distances to other public land survey corners used as evidence or used for proportioning the corner location.

I, Donald Barnes, hereby certify that the corner points as identified by the corner code index were, in a field survey on, October 3, 1988, established, re-established, monumented, re-monumented, recovered or restored as expressed below and in conformance with the regulations and rules as required in the current manual of survey instructions of the United States Department of Interior, Bureau of Land Management.



COUNTY SURVEYOR FILING DATA

Date of computer entry _____

Date microfilmed _____

Number of included sheets _____

CORNER CODE

R15