

U.S. PUBLIC LAND SURVEY MONUMENT RECORD

For Public Land Survey Corners in:

WI ADMINISTRATIVE CODE A-E 7.08 REQUIREMENT

T. 3 N., R. 10 E

CORNER CODE INDEX

A	1	2	3	4	5	6	7	8	9	10	11	12	13	14	15	16	17	18	19	20	21	22	23	24	25
B																									
C	6																								
D																									
E																									
F	7																								
G																									
H																									
I																									
J																									
K	18																								
L																									
M																									
N																									
O																									
P	19																								
Q																									
R																									
S																									
T	30																								
U																									
V																									
W																									
X	31																								
Y																									
Z																									

MA GNOLIA TWP

ROCK COUNTY WI

IF AVAILABLE
ROCK COUNTY COORDINATES PREFERRED

North _____ Elev. _____

East _____


Hor. Datum _____ Vert. Datum _____

LATITUDE _____ ELLIPS. HT. _____

LONGITUDE _____

GPS (X) _____ TRAVERSE (X) _____

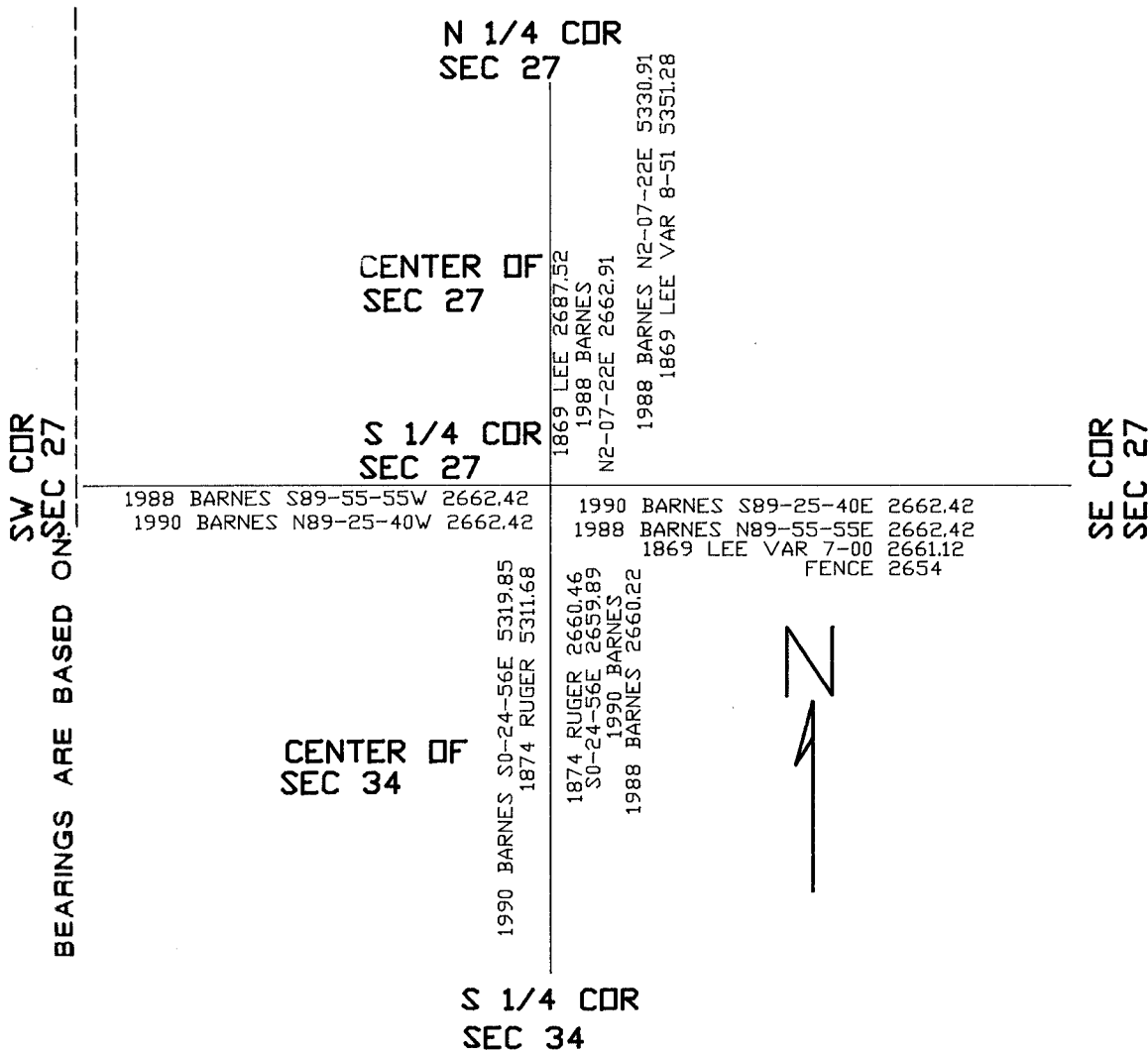
BASED ON THE FOLLOWING CONTROL:

PLACE MONUMENT SYMBOL  AT PROPER LOCATION ON ABOVE INDEX

 CORNER MONUMENT

WITNESS MONUMENT

(a)



FIELD BOOK _____ PAGE # _____

SHEET 1 OF 1

SHOW A PLAN VIEW DRAWING DEPICTING THE CORNER MONUMENT AND SURROUNDING PHYSICAL FEATURES, INCLUDING THE EXCAVATION AREA AND DEPTH.

PLANNING & ZONING COMMITTEE ADOPTED THE ABOVE FORM ON 12/2/1982

CORNER CODE V 15

The first part of the document discusses the importance of maintaining accurate records of all transactions. It emphasizes that proper record-keeping is essential for the success of any business or organization. The text outlines various methods for collecting and organizing data, such as using spreadsheets and databases. It also highlights the need for regular audits and reviews to ensure the integrity and accuracy of the information. The second part of the document focuses on the application of these principles in a specific context, providing detailed examples and case studies. It illustrates how effective record-keeping can lead to better decision-making, improved efficiency, and increased transparency. The document concludes by summarizing the key points and offering practical advice for implementing these practices in a real-world setting.

The following section provides a detailed analysis of the data collected during the study. It includes a series of tables and charts that illustrate the trends and patterns observed. The analysis shows that there is a strong correlation between the variables studied, and that the data supports the hypotheses proposed in the introduction. The results are discussed in detail, with specific references to the data points and statistical tests used. The final part of the document offers conclusions and recommendations based on the findings, suggesting areas for further research and practical applications.

In conclusion, the document has provided a comprehensive overview of the topic, covering both theoretical concepts and practical applications. It has demonstrated the value of thorough research and analysis in understanding complex issues. The findings presented here are intended to serve as a guide for anyone interested in this field, and to encourage further exploration and discovery. The author expresses gratitude to the participants and reviewers who provided valuable feedback and support throughout the process.

The author would like to thank the following individuals for their assistance and contributions to this work: [List of names and roles].

This document is the property of [Organization Name] and is intended for internal use only. It contains confidential information and should not be distributed outside the organization without the express written consent of the author or the organization's management.

Donald Barnes

11/12/1999

11/12/1999

[Signature]

[Text]