

PLAT AND RECORD

Of a Survey on Section 12 T 2 R 11 E. of the 4 P. M. in Plymouth Township

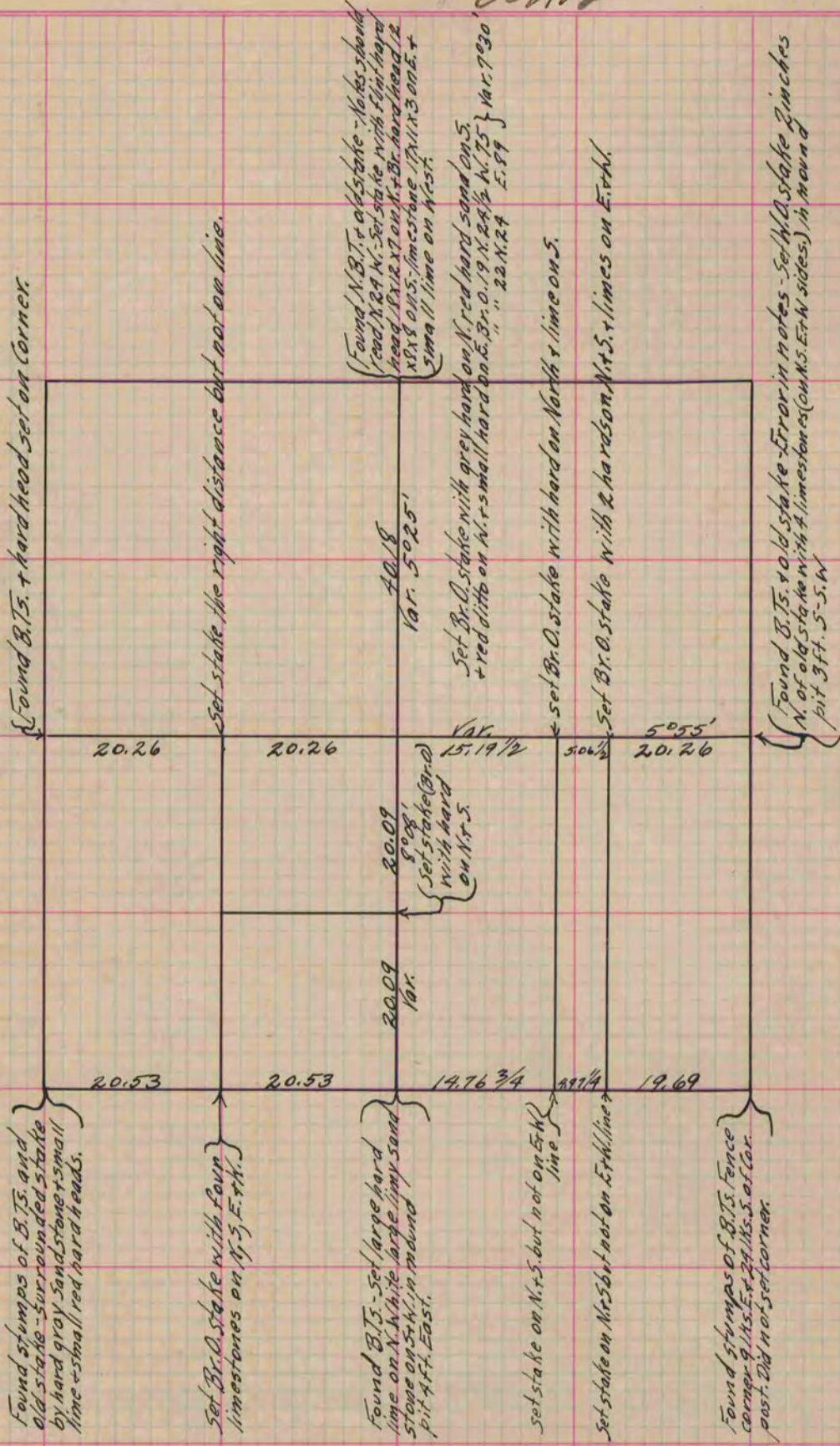
Rock County, Wisconsin, made July the 15+16 1864

I hereby certify that the following is a correct record of said survey as made by me.

COUNTY BUILDING
IN CITY OF БЕЛОIT

(Signed) S. D. Locke.

County Surveyor.



Copied from Lower 1/2 Page 209 Vol. 1. Original County Surveyor's Record.