

# PLAT AND RECORD

Of a Survey on Section 17 T 3 R 14 E. of the 4 P. M. in *Johnstown* Township

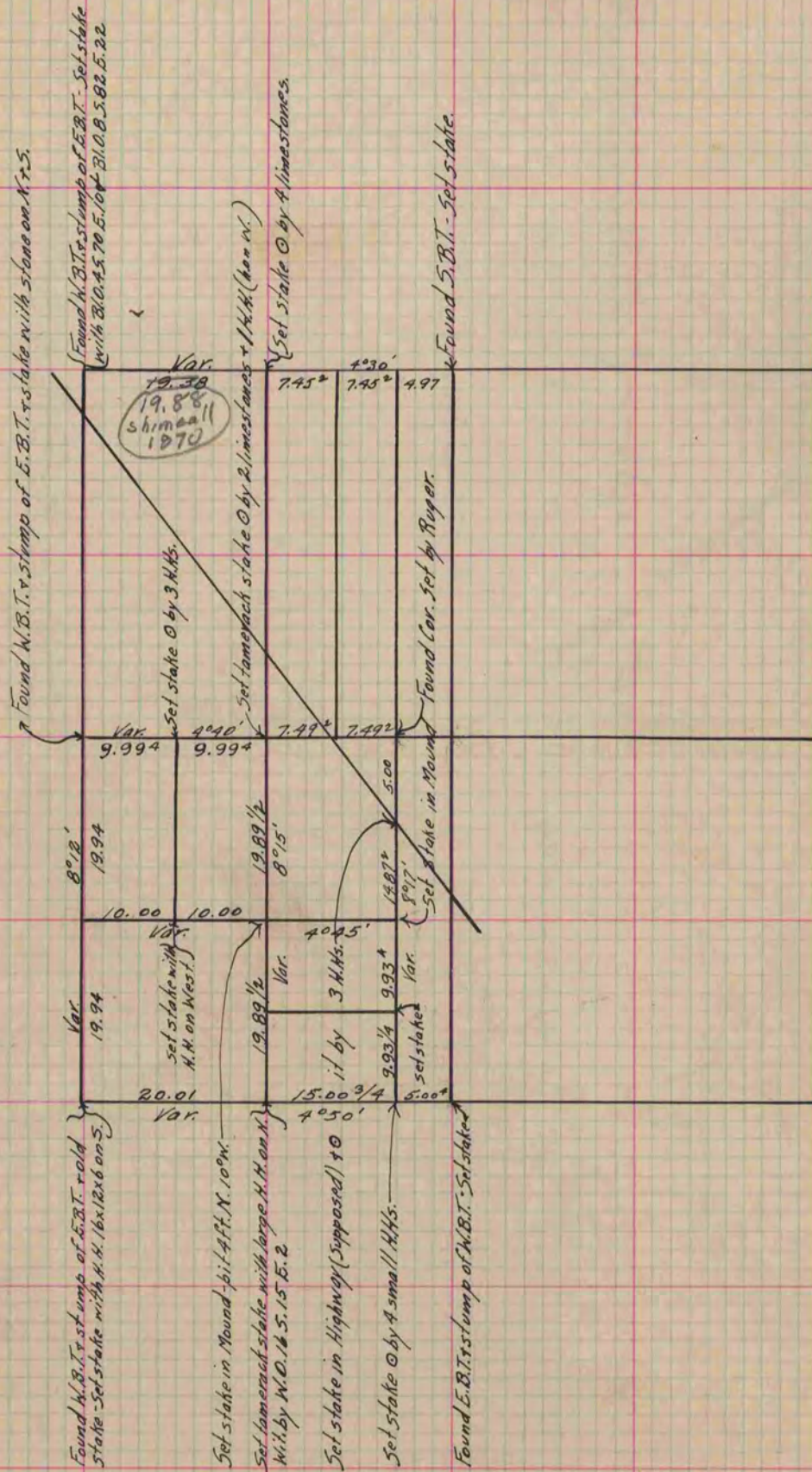
Rock County, Wisconsin, made *January* the *12, 15 & 16<sup>th</sup>* 1867

I hereby certify that the following is a correct record of said survey as made by me.

COUNTY BUILDING  
IN CITY OF BELoit

(Signed) *S.D. Locke*

County Surveyor.



Copied from Page 244 Vol. 1. Original County Surveyor's Record.

Ed. 7/30/69 by C.S.  
Set 1/2" x 1/4" pipe