

PLAT AND RECORD

Of a Survey on Sections 17 & 20 T 3 R 13 E. of the 4 P. M. in Harmony Township

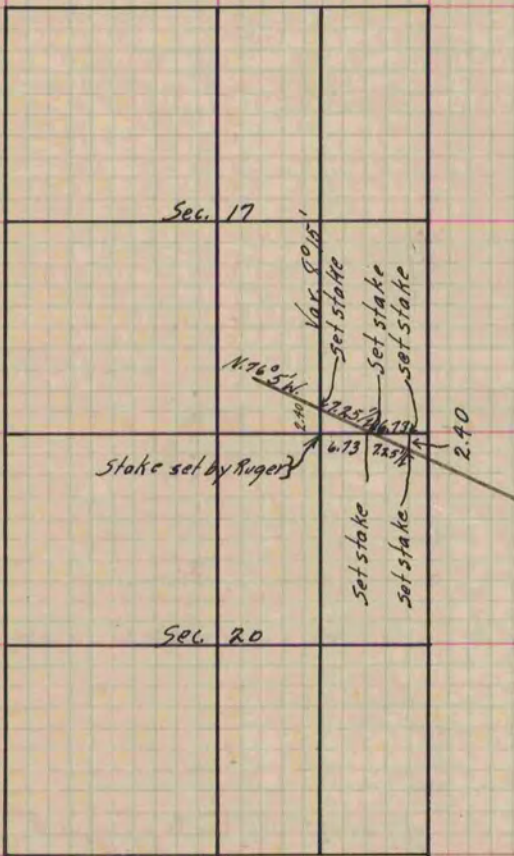
Rock County, Wisconsin, made September the 1863

I hereby certify that the following is a correct record of said survey as made by me.

COUNTY BUILDING
IN CITY OF BELOIT

(Signed) S. D. Locke.
S. D. Locke

County Surveyor.



Copied from lower 1/2 of Page 196 Vol. 1. Original County Surveyor's Record.