

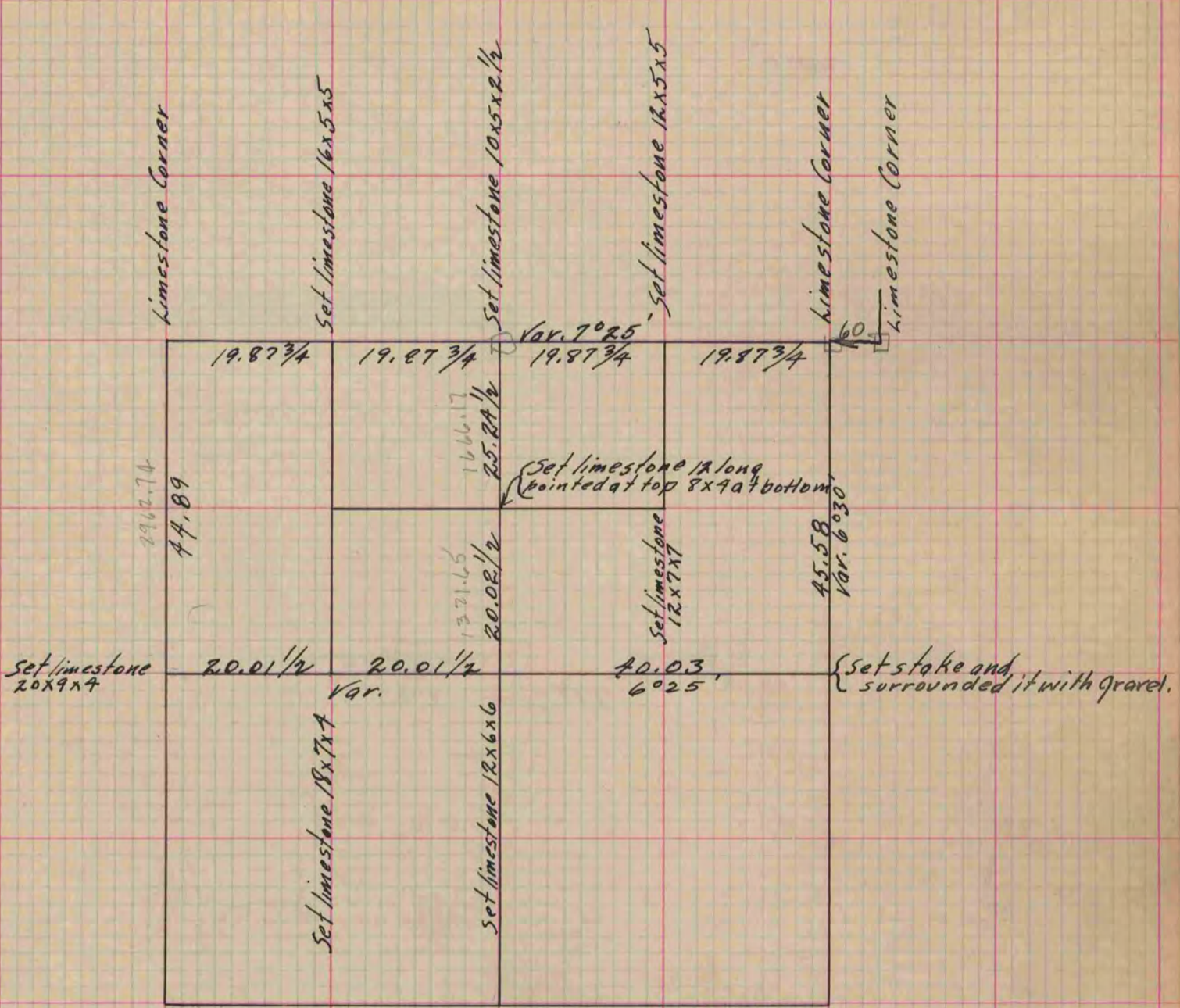
# PLAT AND RECORD

Of a Survey on Section 2 T. 1 R. 12 E. of the 4 P. M. in Beloit Township  
Rock County, Wisconsin, made April the 11<sup>th</sup> 1860

I hereby certify that the following is a correct record of said survey as made by me.

COUNTY BUILDING  
IN CITY OF БЕЛОИТ

(Signed) Edward Ruger.  
ERP County Surveyor.



Copied from Page 138 Vol. 1. Original County Surveyor's Record.