

PLAT AND RECORD

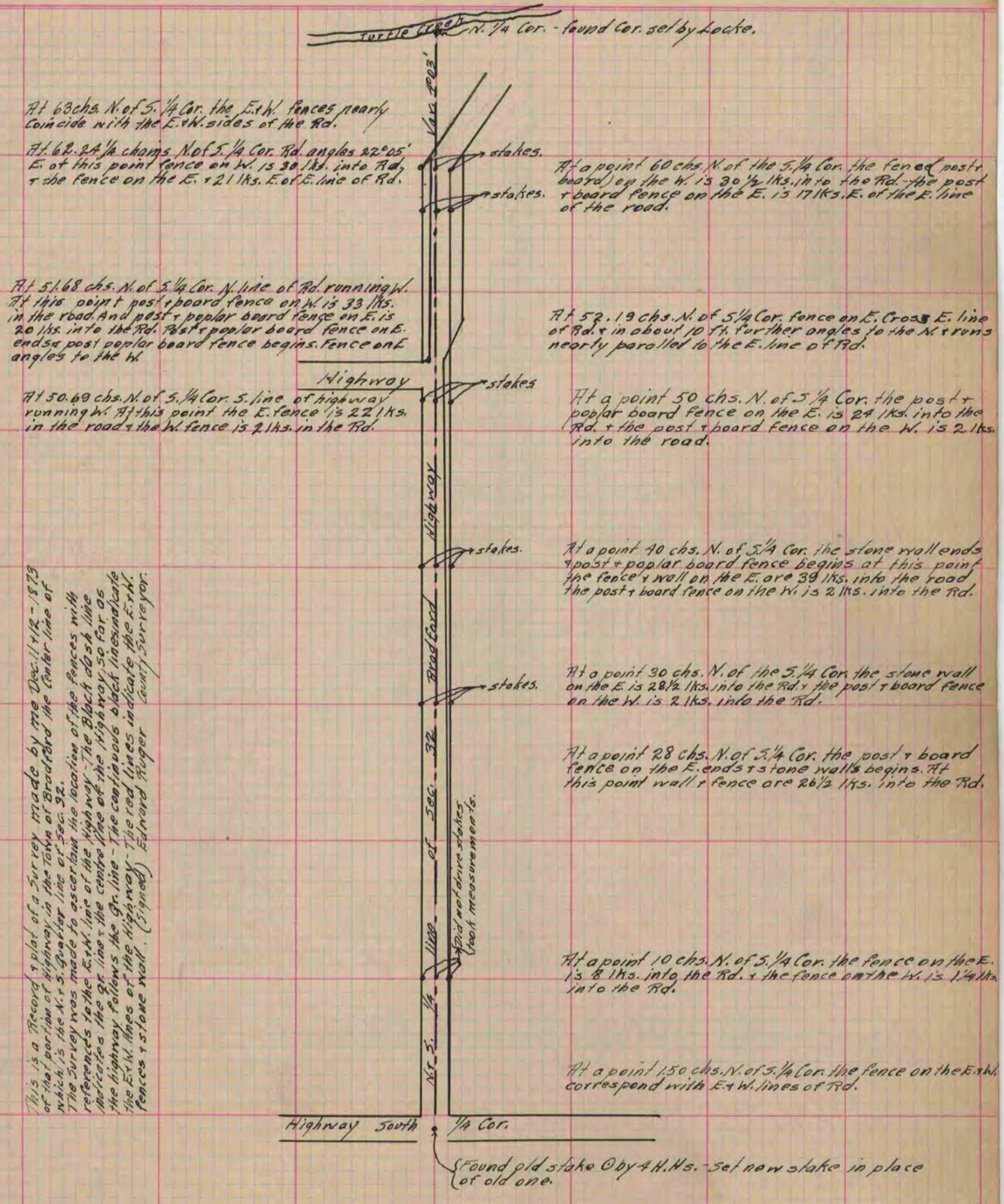
Of a Survey on Section 32 T 2 R 14 E. of the 4 P. M. in Bradford Township

Rock County, Wisconsin, made December the 11th 1873

I hereby certify that the following is a correct record of said survey as made by me.

COUNTY BUILDING
IN CITY OF BELOIT

(Signed) Edward Ruger
County Surveyor.



This is a Record & plat of a Survey made by me Dec. 11/12 - 1873
 of that portion of Highway in the Town of Bradford the Center line of
 which is the N. & S. Quarter line of Sec. 32.
 The Survey was made to ascertain the location of the fences with
 reference to the E. & W. line of the Highway - The Black dash line
 indicates the center line of the Highway, so far as
 the highway follows the Gr. line - The continuous black lines indicate
 the E. & W. lines of the Highway - The red lines indicate the E. & W.
 fences & stone wall. (Signed) Edward Ruger County Surveyor.

Did not drive stakes
 took measurements.

Copied from Page 77 Vol. 2 Original County Surveyor's Record.