

# PLAT AND RECORD

Of a Survey on Section 20 T 2 R 13 E. of the 4 P. M. in LaPrairie Township

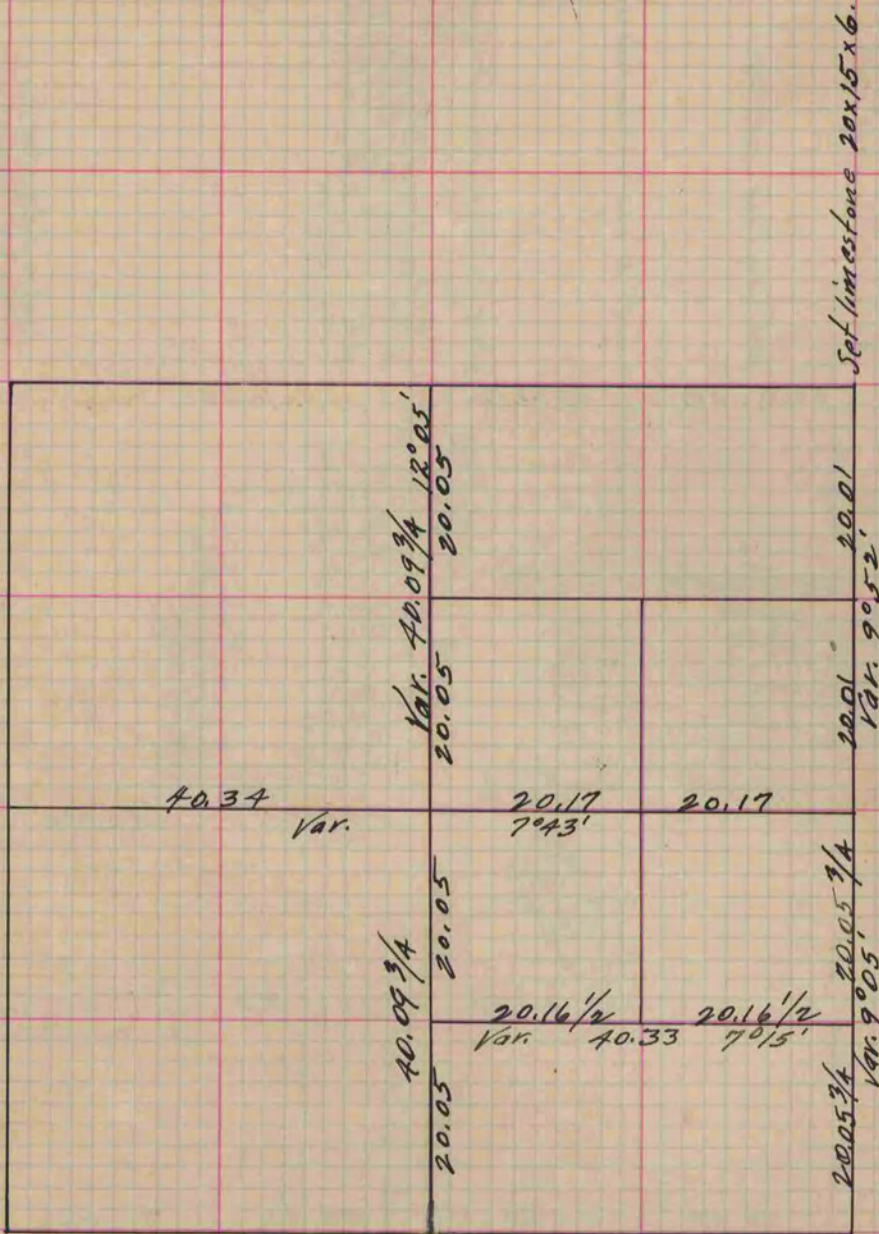
Rock County, Wisconsin, made April the 27<sup>th</sup> 1860

I hereby certify that the following is a correct record of said survey as made by me.

COUNTY BUILDING  
IN CITY OF BELOIT

(Signed) Edward Ruger  
*[Signature]*

County Surveyor.



*Copied from Page 141 Vol. 1. Original County Surveyor's Record.*