

# PLAT AND RECORD

Of a Survey on Section 11 T 4 R 14 E. of the 4 P. M. in Lima Township

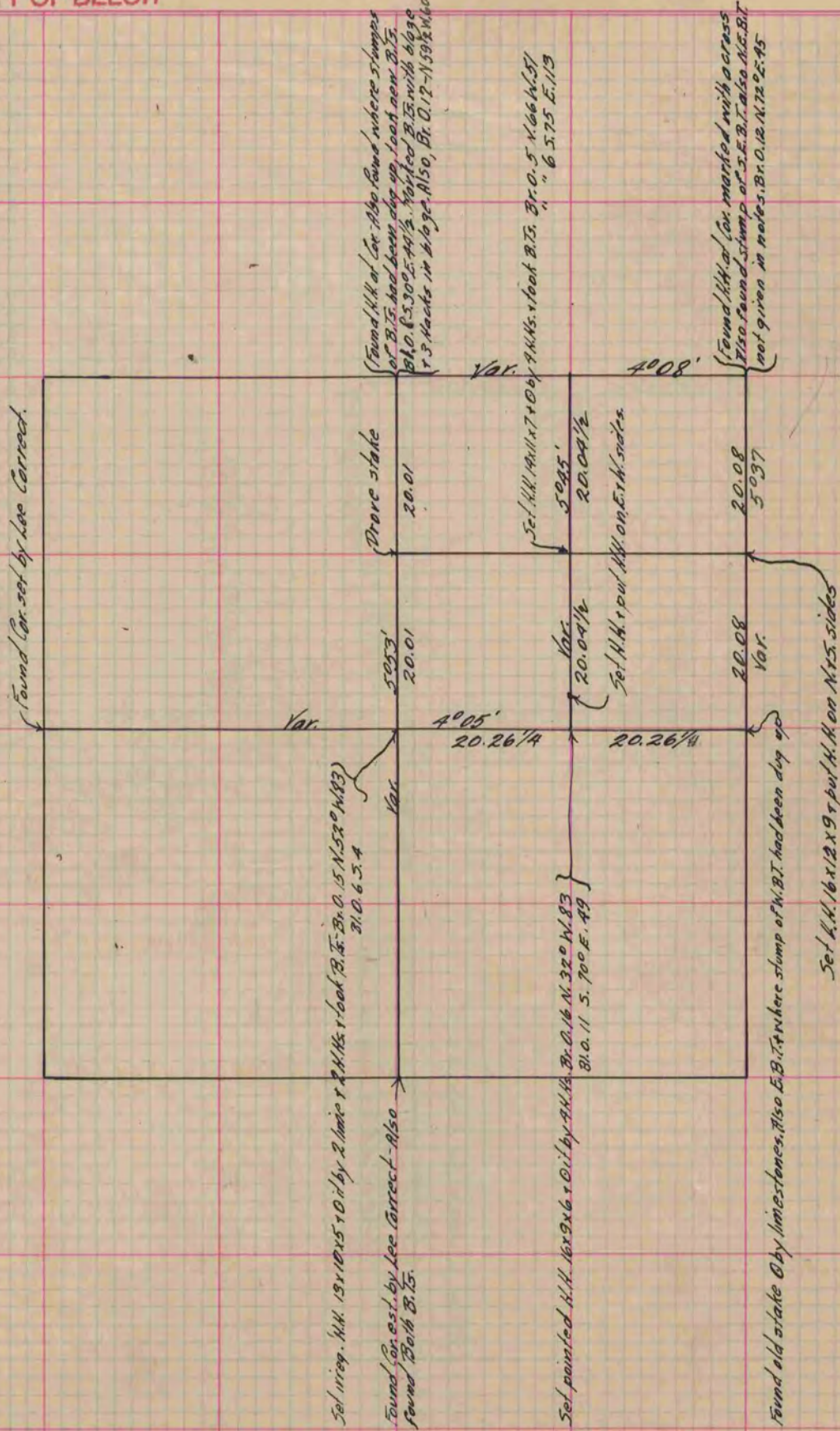
Rock County, Wisconsin, made June the 12+13 1876

I hereby certify that the following is a correct record of said survey as made by me.

COUNTY BUILDING  
IN CITY OF BELOIT

(Signed) Edward Reger  
RMR

County Surveyor.



Copied from P. 165 Vol. 2 Original County Surveyor's Record.