

PLAT AND RECORD

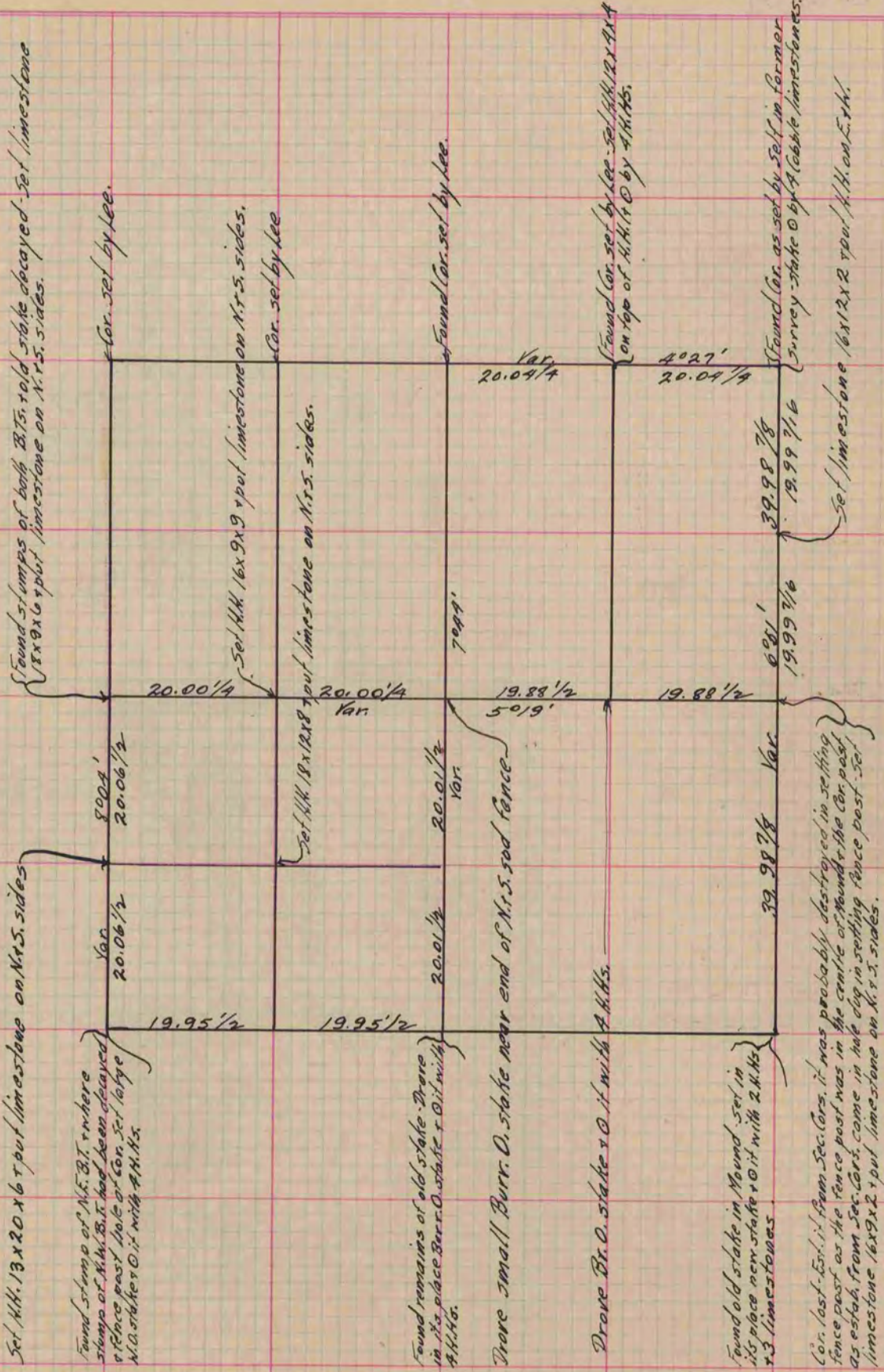
Of a Survey on Section 23 T 2 R 14 E. of the 4 P. M. in Bradford Township
Rock County, Wisconsin, made November the 11 + 12 1873

I hereby certify that the following is a correct record of said survey as made by me.

COUNTY BUILDING
IN CITY OF BELOIT

(Signed) Edward Ruger
CMB

County Surveyor.



Copied from Page 71 Vol. 2 Original County Surveyor's Record.