

# PLAT AND RECORD

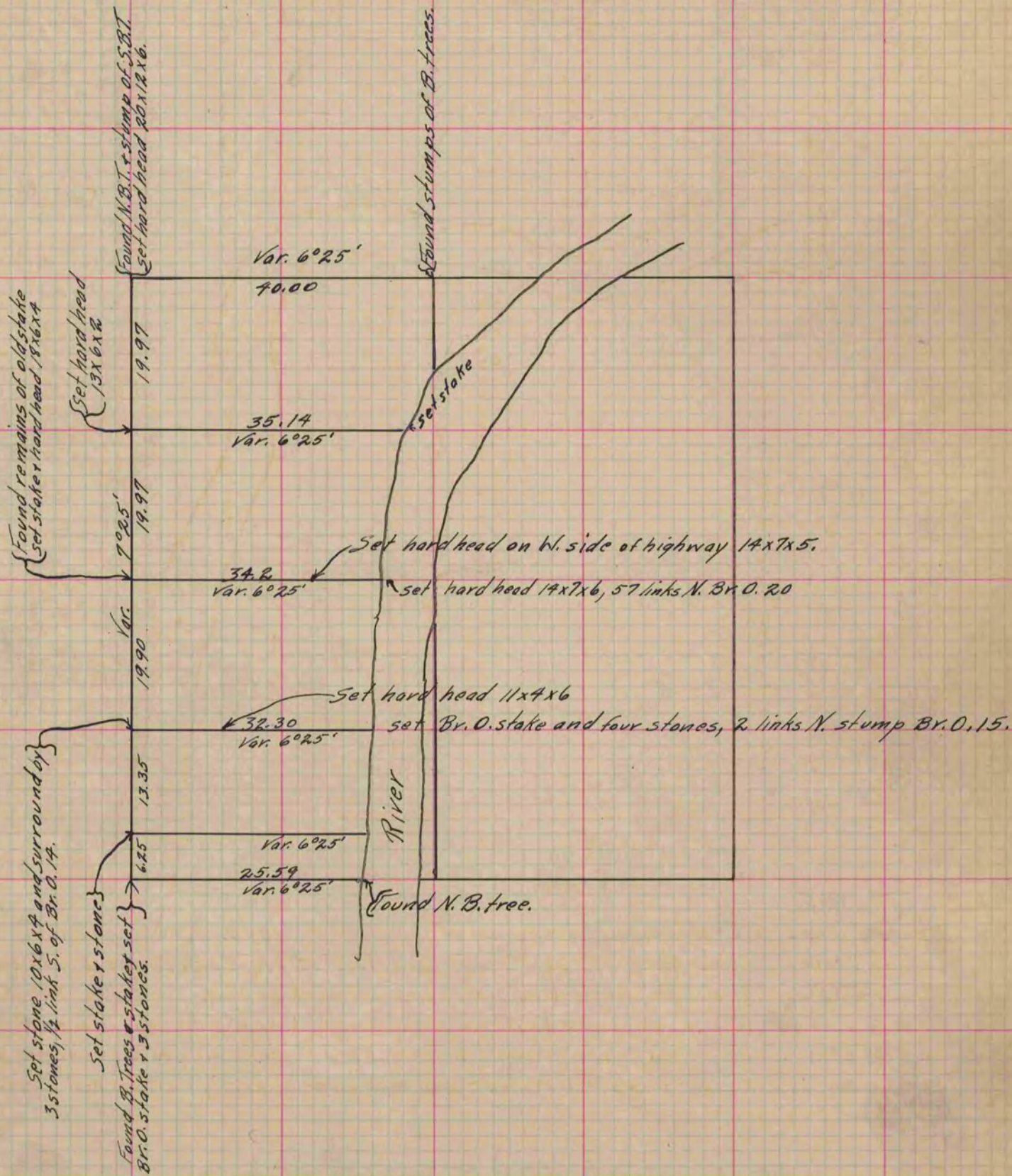
Of a Survey on Section 10 T 2 R 12 E. of the 4 P. M. in Rock Township  
Rock County, Wisconsin, made the 1863

I hereby certify that the following is a correct record of said survey as made by me.

COUNTY BUILDING  
IN CITY OF BELOIT

(Signed) S. D. Locke.  
S. D. Locke

County Surveyor.



Copied from Upper part of Page 195 Vol. 1. County Surveyor's Record