

# PLAT AND RECORD

Of a Survey on Section 26+35 T 2 R 12 E. of the 4 P. M. in Rock Township

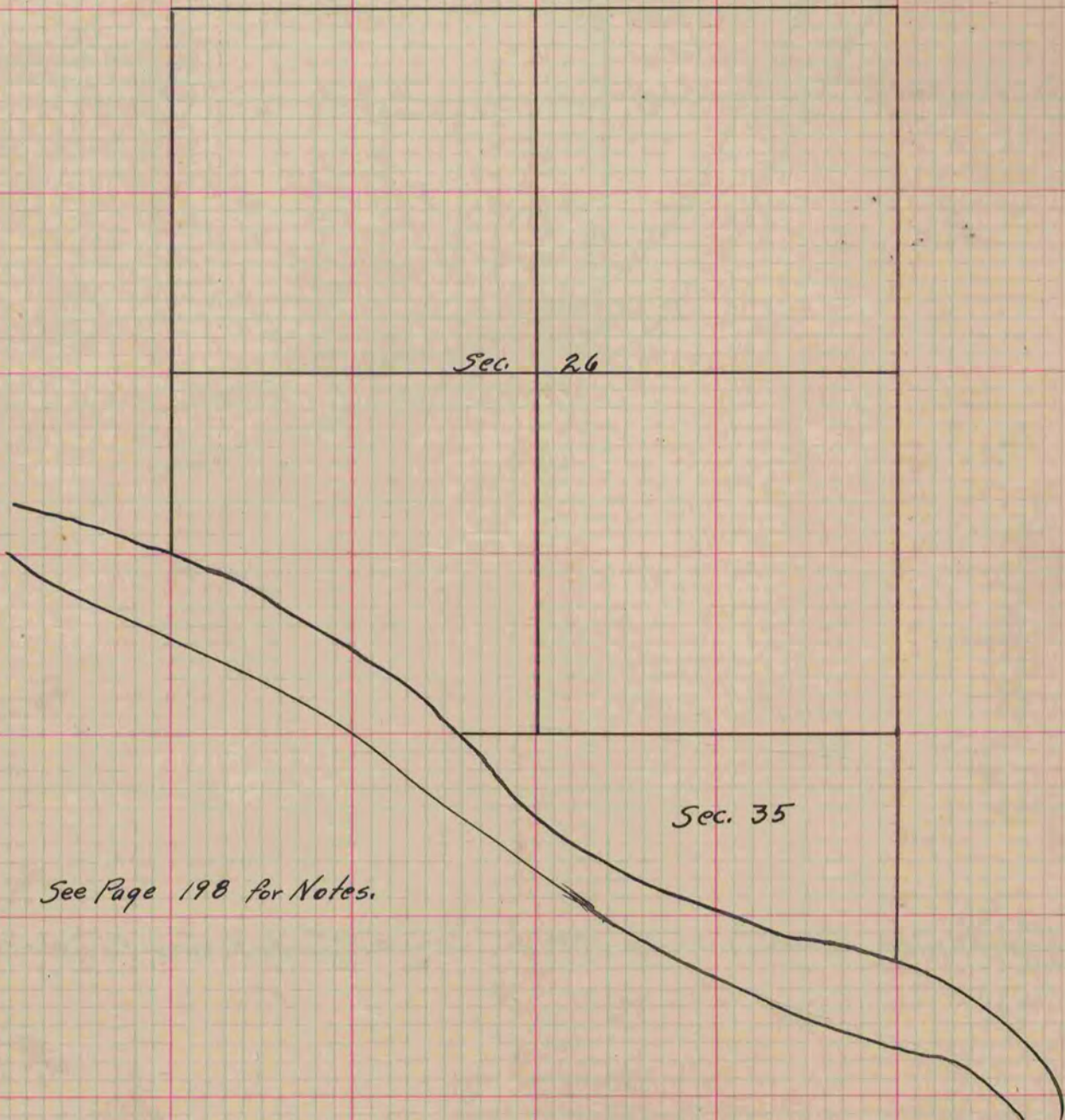
Rock County, Wisconsin, made January the 18+20 1864

I hereby certify that the following is a correct record of said survey as made by me.

COUNTY BUILDING  
IN CITY OF BELOIT

(Signed) S. D. Locke  
SM

County Surveyor.



See Page 198 for Notes.

Copied from Upper 1/2 of Page 199 Vol. One Original County Surveyor's Record.