

# PLAT AND RECORD

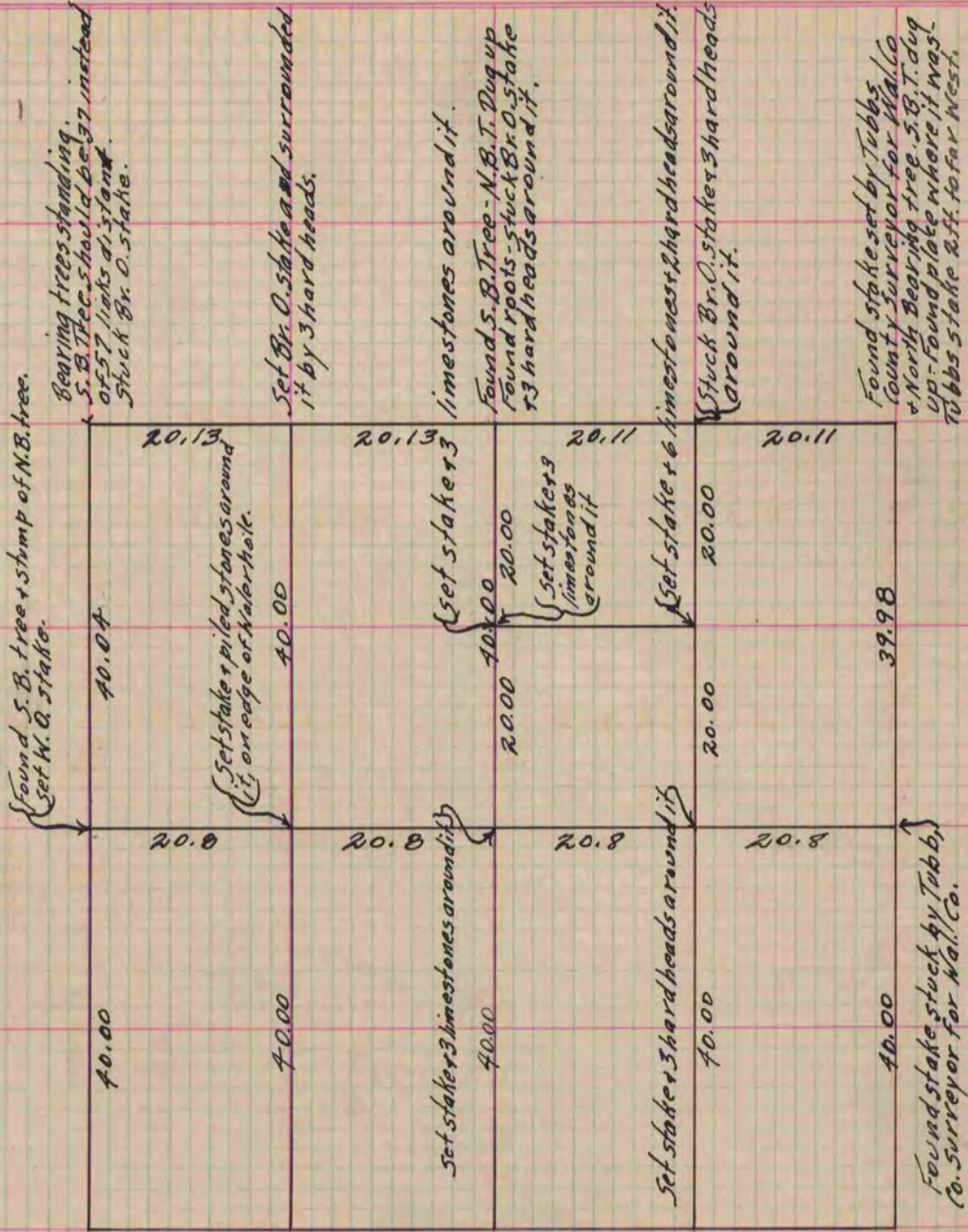
Of a Survey on Section 13 T 3 R 14 E. of the 4 P. M. in Johnstown Township  
 Rock County, Wisconsin, made May the 3rd + 5th 1863

I hereby certify that the following is a correct record of said survey as made by me.

COUNTY BUILDING  
 IN CITY OF БЕЛОIT

(Signed) J. D. Locke  
RLB

County Surveyor.



For stakes and Monuments on South line, see Sec. 24 T 3 R 14 E.  
 Set stakes every 10 chains on North & South lines (Interior)

Copied from Page 188 Vol. One Original County Surveyor's Record.