

# PLAT AND RECORD

Of a Survey on Section 32 T 2 R 13 E. of the 4 P. M. in La Prairie Township

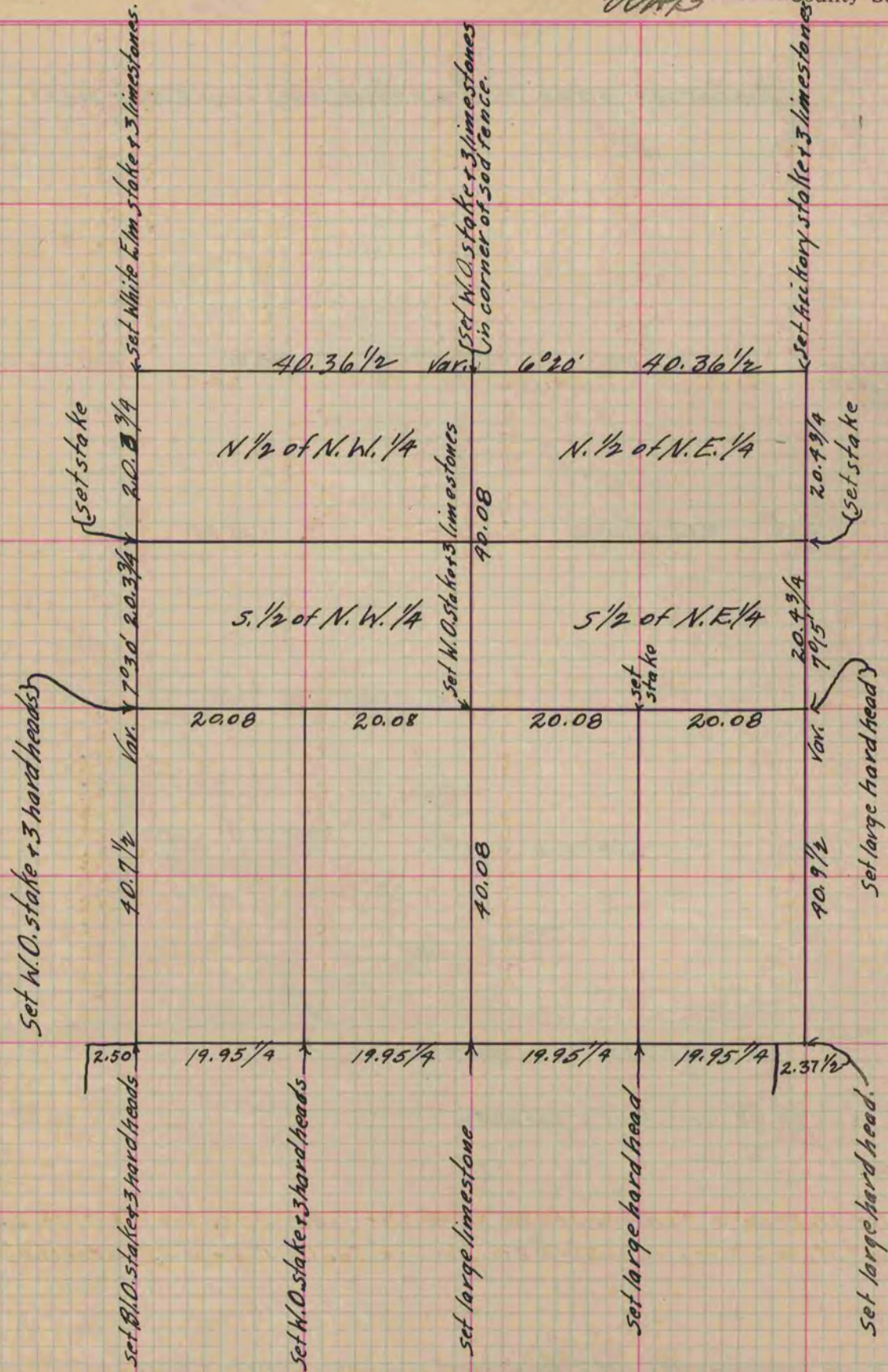
Rock County, Wisconsin, made March the 14<sup>th</sup> 1863

I hereby certify that the following is a correct record of said survey as made by me.

COUNTY BUILDING  
IN CITY OF БЕЛОIT

(Signed) Sylvanus D. Locke  
County Surveyor.

Distances marked in chains & variations marked on lines.



Copied from Page 187 Vol. 1. Original County Surveyor's Record.