

PLAT AND RECORD

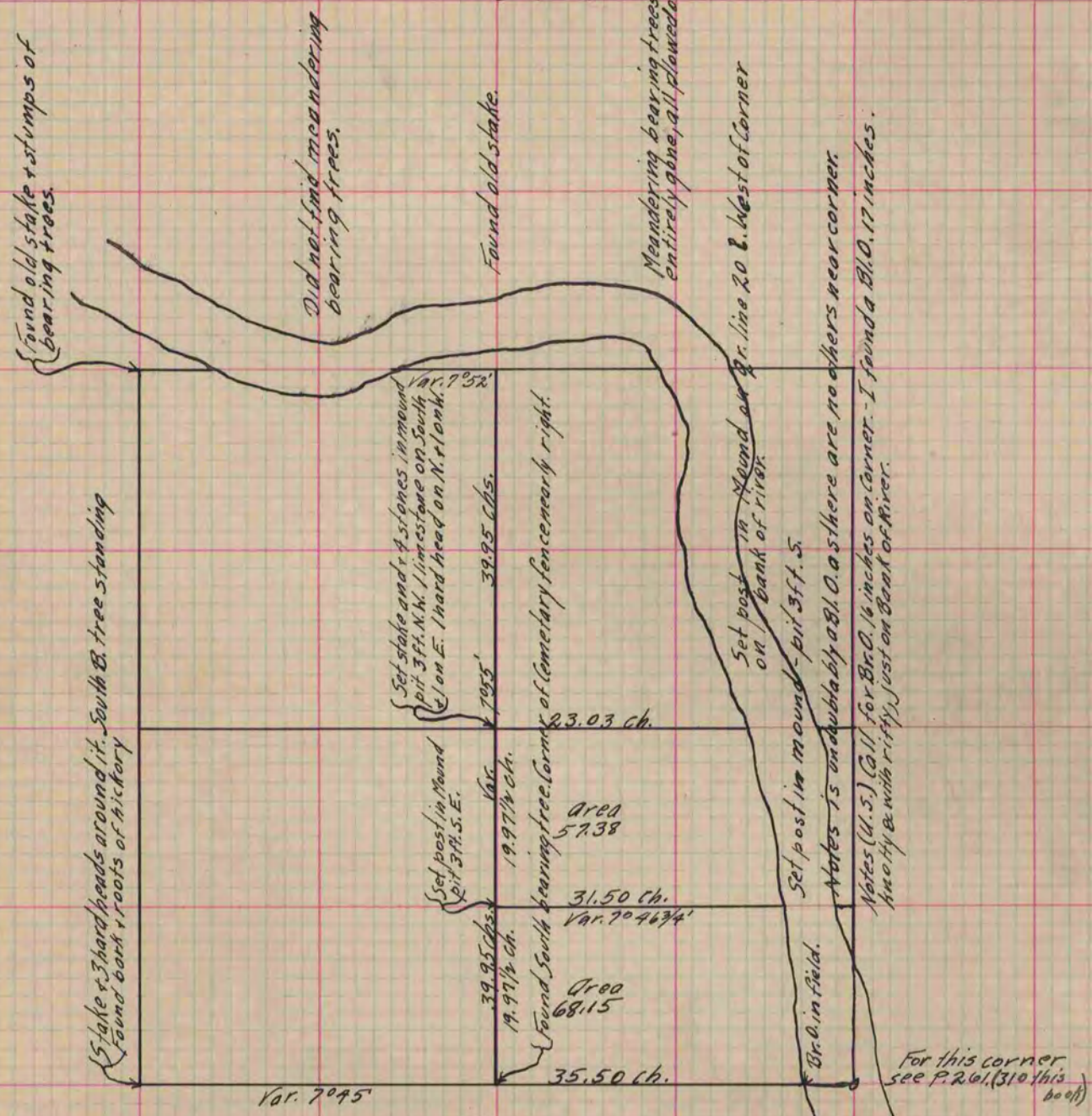
Of a Survey on Section 23 T 3 R 12 E. of the 4 P. M. in Janesville Township
Rock County, Wisconsin, made August the 14-18-20th 1863

I hereby certify that the following is a correct record of said survey as made by me.

COUNTY BUILDING
IN CITY OF БЕЛОIT

(Signed) S.D. Locke
S.D. Locke

County Surveyor.



Meander - line of River Commences on South line of Section at Br. or Bl. 0. 17 inches on Corner, on River, running thence North $19\frac{1}{2}$ West 3 chs; thence North $19\frac{1}{2}$ W., 5 chs., thence N. $13\frac{1}{2}$ W. 7 chs., thence N. $15\frac{1}{2}$ W., 2 chs., thence N. $20\frac{1}{2}$ W., 2 chs., thence N. $60\frac{3}{4}$ W., $1.74\frac{1}{2}$ chs., thence N. 13 E., 2 chs., thence N. 12 W., 1 ch.; thence N. $28\frac{3}{4}$ W., 4 chs.; thence N. 32 W. 2.75 chs.; thence N. 31 W., 3.27 chs.; thence N. $39\frac{1}{4}$ W., 4 chs.; thence N. 45 W., 2 chs.; thence N. 42 W., 3.65 chs.; to the Quarter line, 20 links East of post in Mound - Bearings given according to Magnetic Meridian, as indicated by needle.

Copied from Page 194 Vol. One - Original County Surveyor's Record.