

PLAT AND RECORD

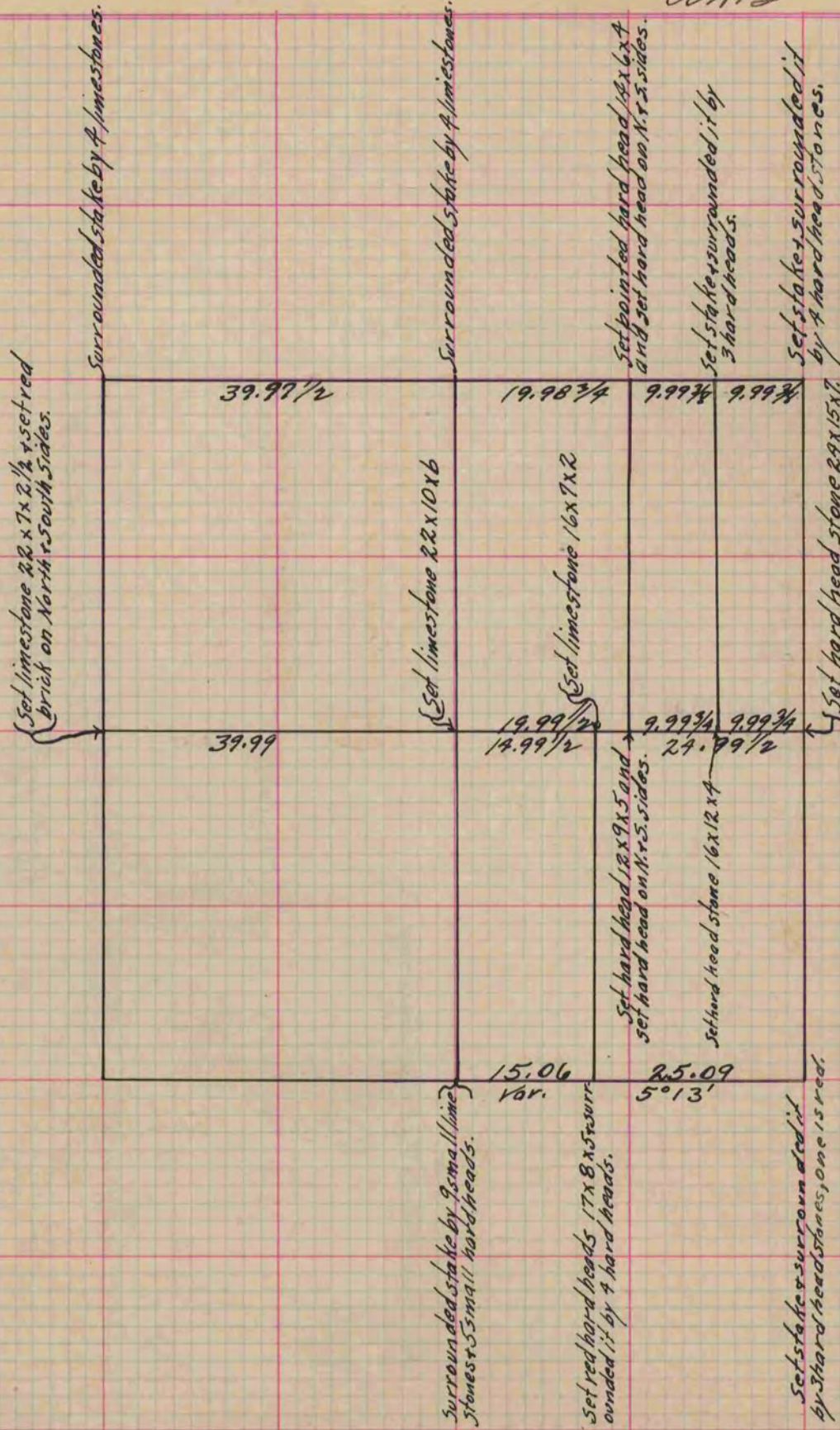
Of a Survey on Section 12 T 2 R 13 E. of the 4 P. M. in La Prairie Township
Rock County, Wisconsin, made June the 7th 1861

I hereby certify that the following is a correct record of said survey as made by me.

COUNTY BUILDING
IN CITY OF БЕЛОИТ

(Signed) Edward Ruyer.
RMB

County Surveyor.



Copied from Page 176 Vol. 1. Original County Surveyor's Record.