

PLAT AND RECORD

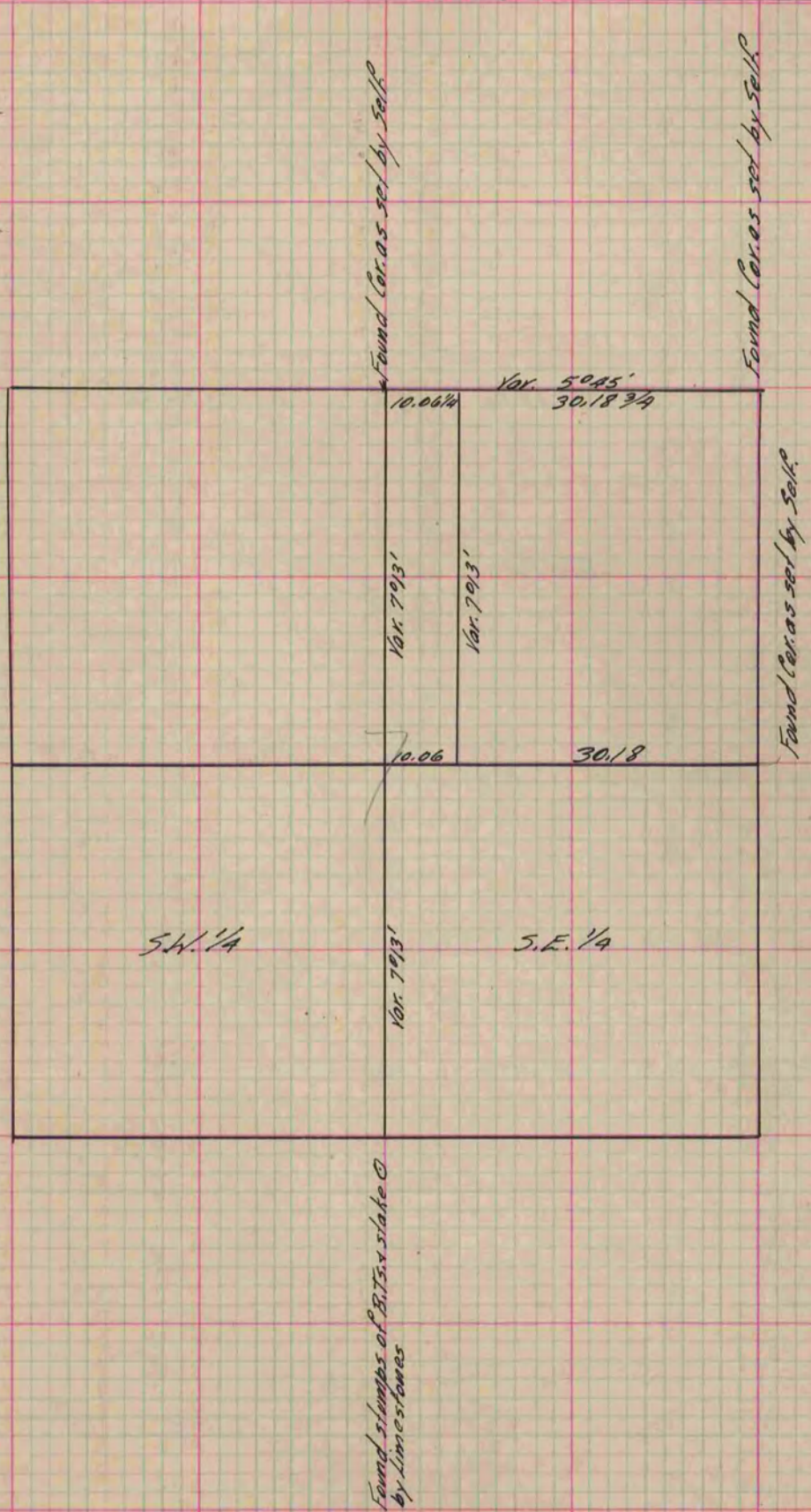
Of a Survey on Section 7 T 2 R 12 E. of the 4 P. M. in Rock Township
Rock County, Wisconsin, made March the 23 1868

I hereby certify that the following is a correct record of said survey as made by me.

COUNTY BUILDING
IN CITY OF BELOIT

(Signed) S.D. Locke
S.D.L.

County Surveyor.



Copied from P. 263 Vol. County Surveyor's Record.