

PLAT AND RECORD

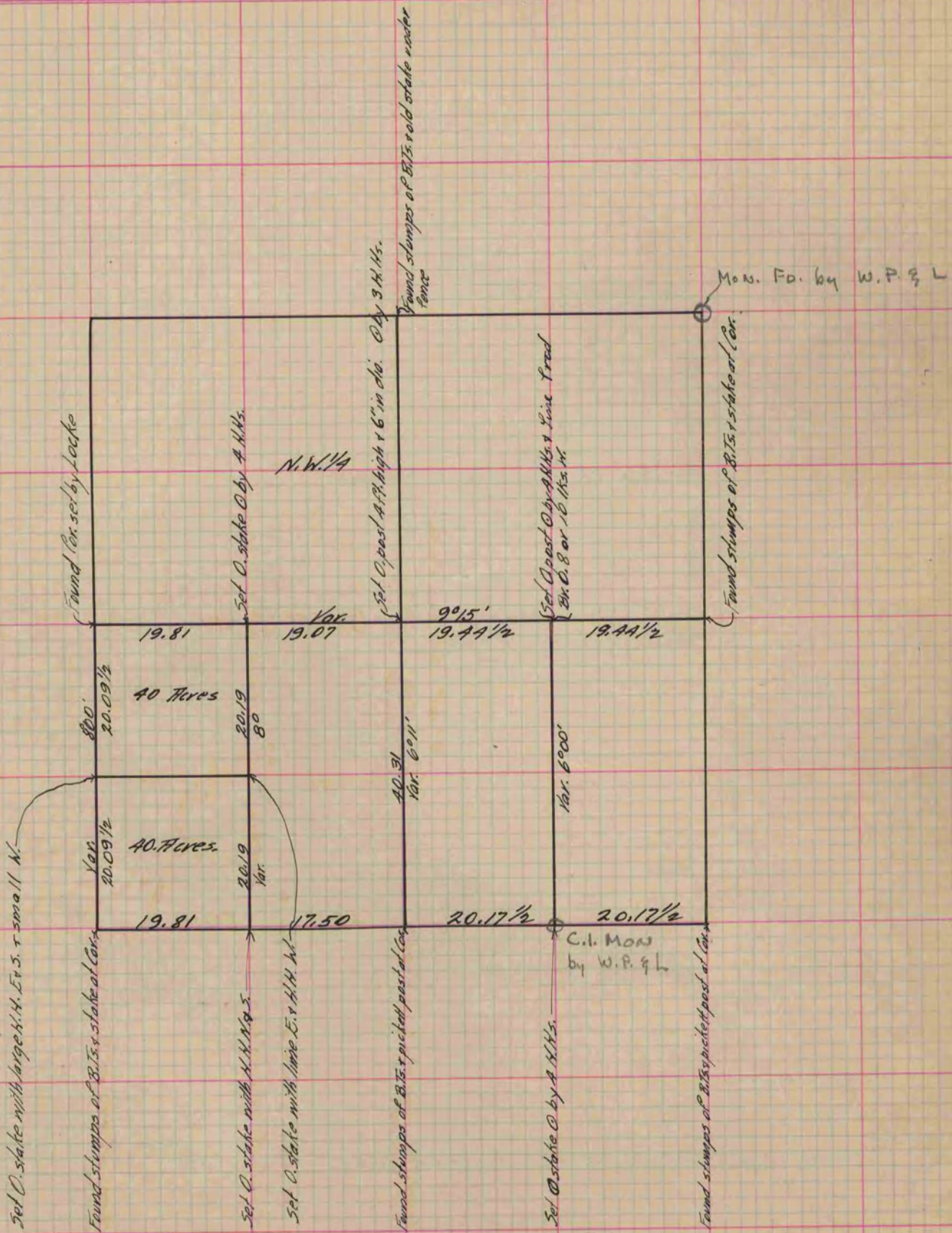
Of a Survey on Section 6 T 3 R 12 E. of the 4 P.M. in Sanesville Township
Rock County, Wisconsin, made April the 12th & 13th 1869

I hereby certify that the following is a correct record of said survey as made by me.

COUNTY BUILDING
IN CITY OF БЕЛОIT

(Signed) R.K. Lee
RKL

Deputy County Surveyor.



Copied from P. 278 Vol. 1 County Surveyor's Record.