

# PLAT AND RECORD

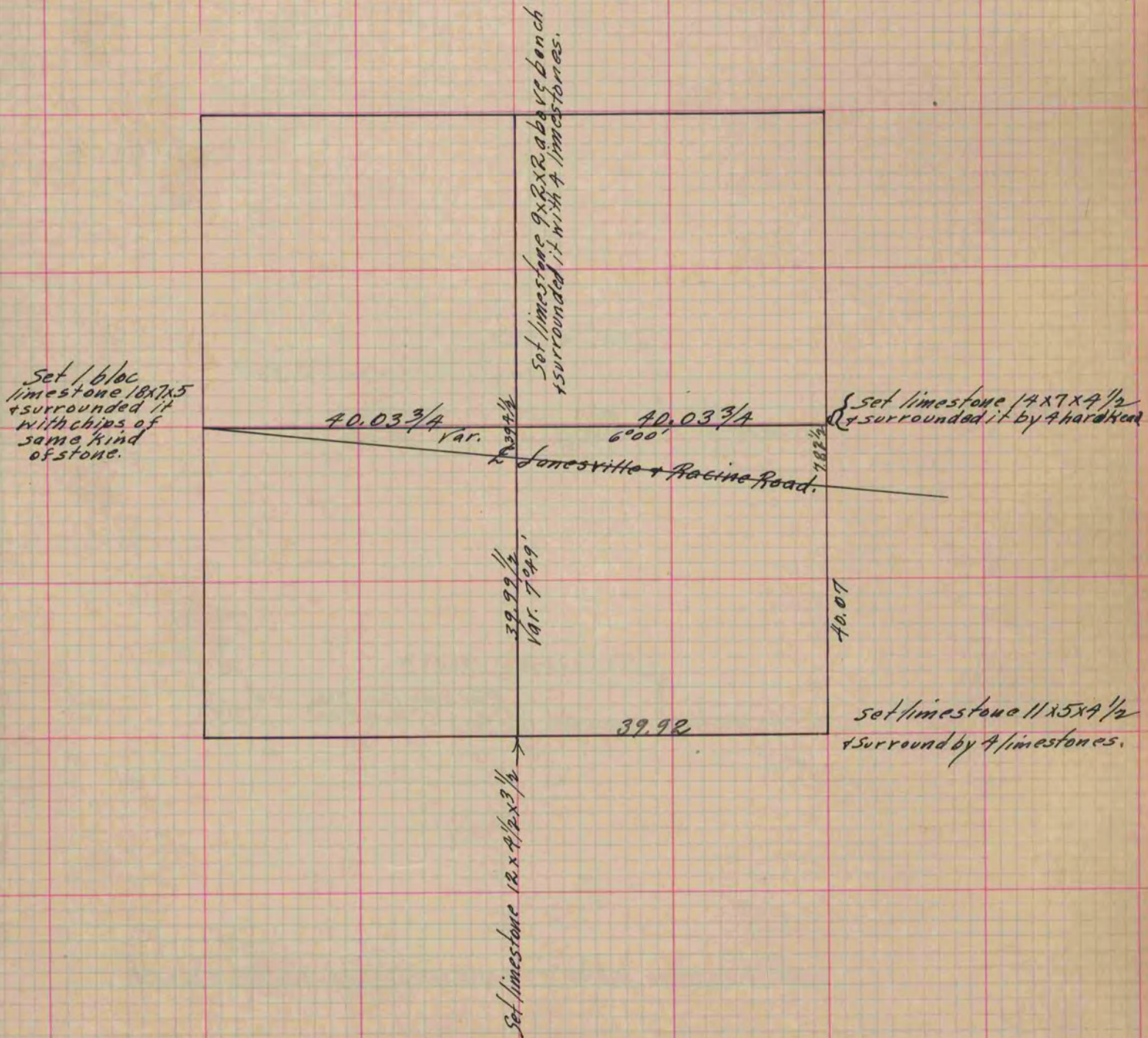
143

Of a Survey on Section 3 T 2 R 13 E. of the 4 P. M. in La Prairie Township  
Rock County, Wisconsin, made October the 9<sup>th</sup> 1860

I hereby certify that the following is a correct record of said survey as made by me.

COUNTY BUILDING  
IN CITY OF БЕЛОIT

(Signed) Edward Ruger  
County Surveyor.



Copied from Page 152 Vol. 1. Original County Surveyors Record.