

PLAT AND RECORD

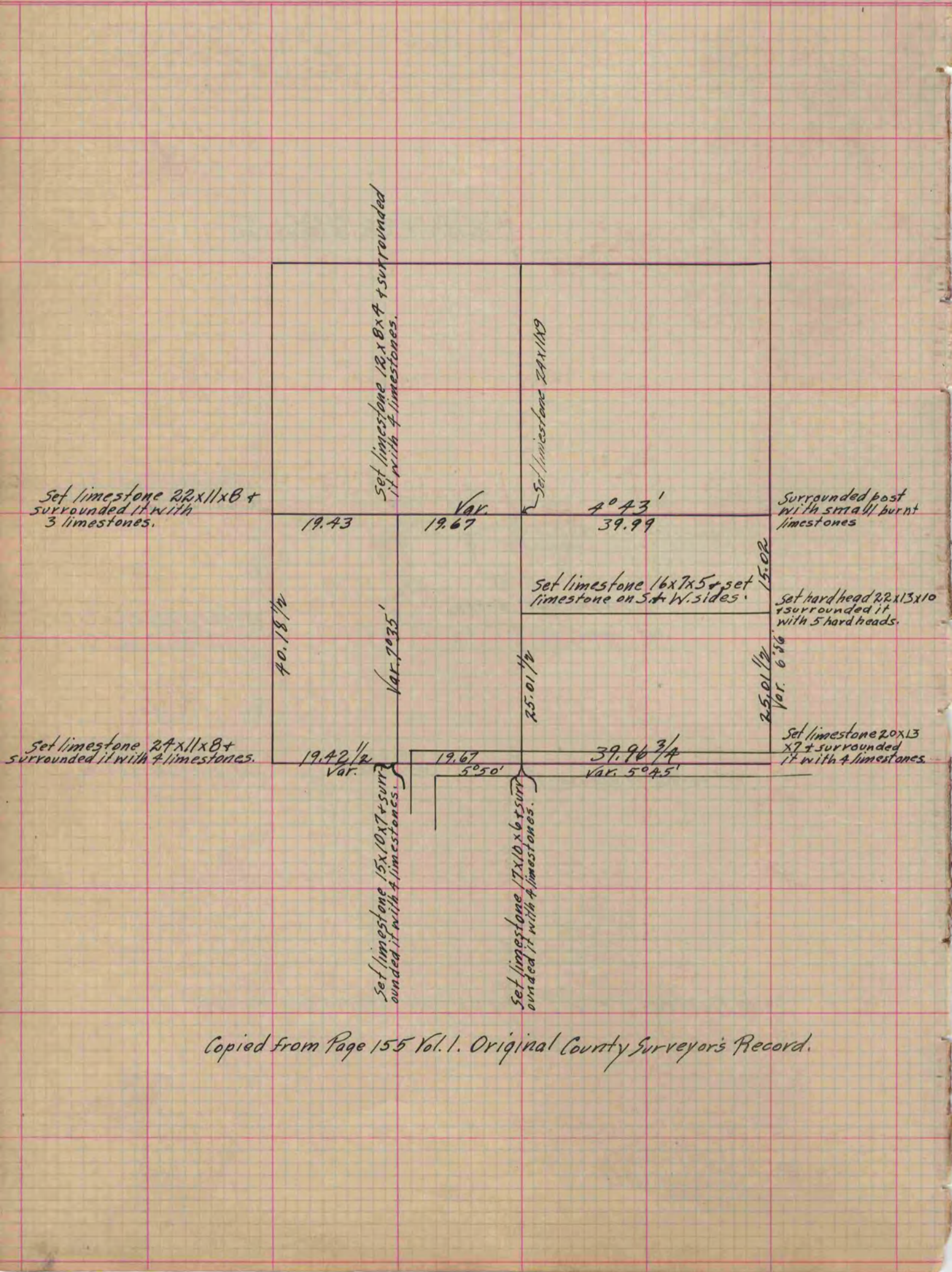
Of a Survey on Section 31 T 2 R 14 E. of the 4 P. M. in Bradford Township
Rock County, Wisconsin, made October the 30th 1860

I hereby certify that the following is a correct record of said survey as made by me.

COUNTY BUILDING
IN CITY OF BELOIT

(Signed) Edward Roger
RAE

County Surveyor.



Copied from Page 155 Vol. 1. Original County Surveyor's Record.