

# PLAT AND RECORD

Of a Survey on Section 2 T 2 R 13 E. of the 4 P. M. in La Prairie Township

Rock County, Wisconsin, made October the 10th 1860

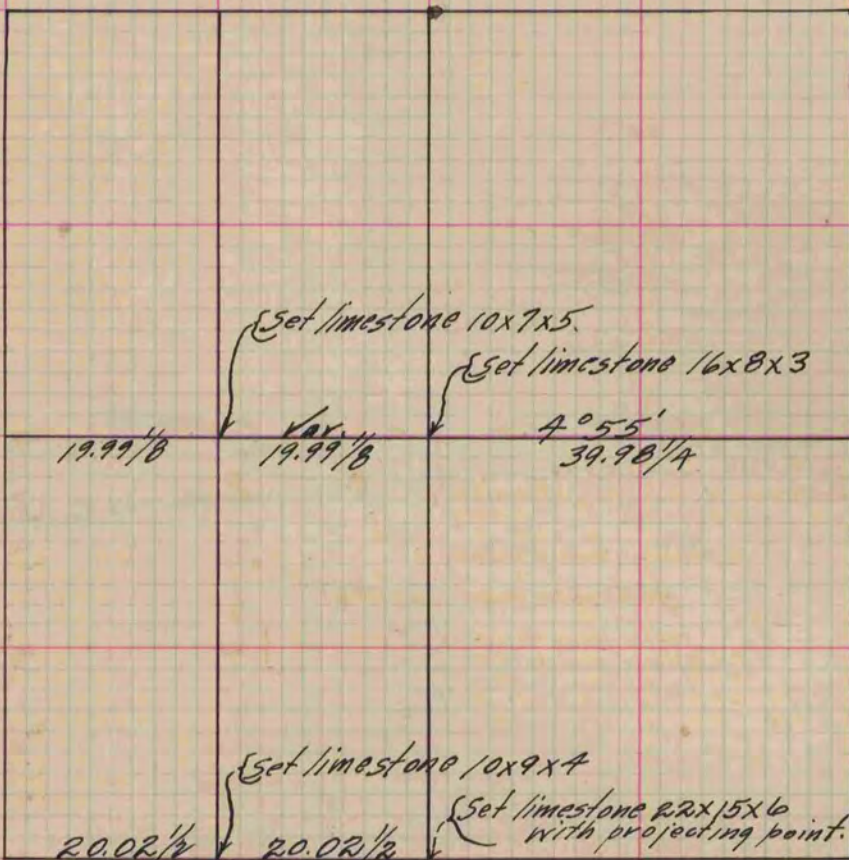
I hereby certify that the following is a correct record of said survey as made by me.

COUNTY BUILDING  
IN CITY OF BELOIT

(Signed) Edward Auger  
*EA*

County Surveyor.

The Cor. on W. line of Sec 2 are the same as  
the Sec. 3 over 1/400.



Copied from Page 153 Vol. 1. Original County Surveyor's Record.